



(/)

[Products ▾](#)
[Careers \(https://zauba.company/careers.html?utm_campaign=referral&utm_medium=zaubacorp&utm_source=careers\)](https://zauba.company/careers.html?utm_campaign=referral&utm_medium=zaubacorp&utm_source=careers)
[Sign In \(https://www.zaubacorp.com/user/login?destination=directorsearchresults/AMRITA-HIRUBHAI-PATEL\)](https://www.zaubacorp.com/user/login?destination=directorsearchresults/AMRITA-HIRUBHAI-PATEL)
[Sign Up \(https://www.zaubacorp.com/user/register?destination=directorsearchresults/AMRITA-HIRUBHAI-PATEL\)](https://www.zaubacorp.com/user/register?destination=directorsearchresults/AMRITA-HIRUBHAI-PATEL)
 Company
 Director
 Trademark
 Address

Enter company name or cin

[Browse Companies by Activity, Age and Location \(https://www.zaubacorp.com/company-list\)](https://www.zaubacorp.com/company-list)
[Home \(https://www.zaubacorp.com\)](https://www.zaubacorp.com) › Director Search Results

Directors named AMRITA HIRUBHAI PATEL

9 records found

DIN	Name	Company
00065052	AMRITA HIRUBHAI PATEL (https://www.zaubacorp.com/director/AMRITA-HIRUBHAI-PATEL/00065052)	TATA GLOBAL BEVERAGES LIMITED (https://www.zaubacorp.com/company/TATA-GLOBAL-BEVERAGES-LIMITED/L15491WB1962PLC031425)
00065052	AMRITA HIRUBHAI PATEL (https://www.zaubacorp.com/director/AMRITA-HIRUBHAI-PATEL/00065052)	GMM PFAUDLER LIMITED (https://www.zaubacorp.com/company/GMM-PFAUDLER-LIMITED/L29199GJ1962PLC001171)
00065052	AMRITA HIRUBHAI PATEL (https://www.zaubacorp.com/director/AMRITA-HIRUBHAI-PATEL/00065052)	INDIAGEN LIMITED (https://www.zaubacorp.com/company/INDIAGEN-LIMITED/U01211TG2004PLC044520)
00065052	AMRITA HIRUBHAI PATEL (https://www.zaubacorp.com/director/AMRITA-HIRUBHAI-PATEL/00065052)	DHARA VEGETABLE OIL AND FOODS COMPANY LIMITED (https://www.zaubacorp.com/company/DHARA-VEGETABLE-OIL-AND-FOODS-COMPANY-LIMITED/U15141DL2000PLC173051)
00065052	AMRITA HIRUBHAI PATEL (https://www.zaubacorp.com/director/AMRITA-HIRUBHAI-PATEL/00065052)	MOTHER DAIRY FRUIT AND VEGETABLE PRIVATE LIMITED (https://www.zaubacorp.com/company/MOTHER-DAIRY-FRUIT-AND-VEGETABLE-PRIVATE-LIMITED/U15209DL2000PTC104671)

00065052	AMRITA HIRUBHAI PATEL (https://www.zaubacorp.com/director/AMRITA-HIRUBHAI-PATEL/00065052)	IDMC LIMITED (https://www.zaubacorp.com/company/IDMC-LIMITED/U29299GJ1992PLC018283)
00065052	AMRITA HIRUBHAI PATEL (https://www.zaubacorp.com/director/AMRITA-HIRUBHAI-PATEL/00065052)	SAFAL NATIONAL EXCHANGE OF INDIA LIMITED (https://www.zaubacorp.com/company/SAFAL-NATIONAL-EXCHANGE-OF-INDIA-LIMITED/U51909DL2006PLC234695)
00065052	AMRITA HIRUBHAI PATEL (https://www.zaubacorp.com/director/AMRITA-HIRUBHAI-PATEL/00065052)	INDIAN IMMUNOLOGICALS LIMITED (https://www.zaubacorp.com/company/INDIAN-IMMUNOLOGICALS-LIMITED/U72200TG1999PLC032666)



[All Companies \(https://www.zaubacorp.com/companybrowse\)](https://www.zaubacorp.com/companybrowse) \
 [All Directors \(https://www.zaubacorp.com/directorsbrowse\)](https://www.zaubacorp.com/directorsbrowse) \
 [All Trademarks \(https://www.zaubacorp.com/trademarkbrowse\)](https://www.zaubacorp.com/trademarkbrowse) \
 [Septaz \(https://www.septaz.com?utm_campaign=referral&utm_medium=zaubacorp&utm_source=footer\)](https://www.septaz.com?utm_campaign=referral&utm_medium=zaubacorp&utm_source=footer) \
 [Import Export Data \(https://www.zaubacorp.com/import-export-data\)](https://www.zaubacorp.com/import-export-data) \
 [About Us \(https://www.zaubacorp.com/about-us\)](https://www.zaubacorp.com/about-us) \
 [FAQ \(https://www.zaubacorp.com/faq\)](https://www.zaubacorp.com/faq) \
 [Privacy Policy \(https://www.zaubacorp.com/privacy-policy\)](https://www.zaubacorp.com/privacy-policy) \
 [Terms of Use \(https://www.zaubacorp.com/terms\)](https://www.zaubacorp.com/terms) \
 [Refunds & Cancellation \(https://www.zaubacorp.com/refunds-cancellation\)](https://www.zaubacorp.com/refunds-cancellation) \
 [Contact US \(https://www.zaubacorp.com/contact-us\)](https://www.zaubacorp.com/contact-us)

© 2013 Zauba Technologies & Data Services Private Limited. All rights reserved.

 (<https://www.facebook.com/zaubatechnologies>)
  (<https://twitter.com/wearezauba>)
  (<https://www.linkedin.com/company/zauba>)



TOP OF PAGE



(/)

Products ▾

Careers (https://zauba.company/careers.html?utm_campaign=referral&utm_medium=zaubacorp&utm_source=careers)

Sign In (<https://www.zaubacorp.com/user/login?destination=directorsearchresults/Deepak-Tikku>)

Sign Up (<https://www.zaubacorp.com/user/register?destination=directorsearchresults/Deepak-Tikku>)

Company Director Trademark Address

Enter company name or cin

[Browse Companies by Activity, Age and Location \(https://www.zaubacorp.com/company-list\)](https://www.zaubacorp.com/company-list)

Home (<https://www.zaubacorp.com>) › Director Search Results

Directors named Deepak Tikku

11 records found

Show entries

Search:

DIN	Name	Company
00064125	DEEPAK TIKKU (https://www.zaubacorp.com/director/DEEPAK-TIKKU/00064125)	INDIAGEN LIMITED (https://www.zaubacorp.com/company/INDIAGEN-LIMITED/U01211TG2004PLC044520)
00064125	DEEPAK TIKKU (https://www.zaubacorp.com/director/DEEPAK-TIKKU/00064125)	NDDB DAIRY SERVICES (https://www.zaubacorp.com/company/NDDB-DAIRY-SERVICES/U01403DL2009NPL195142)
00064125	DEEPAK TIKKU (https://www.zaubacorp.com/director/DEEPAK-TIKKU/00064125)	DHARA VEGETABLE OIL AND FOODS COMPANY LIMITED (https://www.zaubacorp.com/company/DHARA-VEGETABLE-OIL-AND-FOODS-COMPANY-LIMITED/U15141DL2000PLC173051)
00064125	DEEPAK TIKKU (https://www.zaubacorp.com/director/DEEPAK-TIKKU/00064125)	MOTHER DAIRY FRUIT AND VEGETABLE PRIVATE LIMITED (https://www.zaubacorp.com/company/MOTHER-DAIRY-FRUIT-AND-VEGETABLE-PRIVATE-LIMITED/U15209DL2000PTC104671)

00064125	DEEPAK TIKKU (https://www.zaubacorp.com/director/DEEPAK-TIKKU/00064125)	MOTHER DAIRY FOODS PROCESSING LIMITED (https://www.zaubacorp.com/company/MOTHER-DAIRY-FOODS-PROCESSING-LIMITED/U15419DL2002PLC115531)
00064125	DEEPAK TIKKU (https://www.zaubacorp.com/director/DEEPAK-TIKKU/00064125)	IDMC LIMITED (https://www.zaubacorp.com/company/IDMC-LIMITED/U29299GJ1992PLC018283)
00064125	DEEPAK TIKKU (https://www.zaubacorp.com/director/DEEPAK-TIKKU/00064125)	SAFAL NATIONAL EXCHANGE OF INDIA LIMITED (https://www.zaubacorp.com/company/SAFAL-NATIONAL-EXCHANGE-OF-INDIA-LIMITED/U51909DL2006PLC234695)
00064125	DEEPAK TIKKU (https://www.zaubacorp.com/director/DEEPAK-TIKKU/00064125)	INDIAN IMMUNOLOGICALS LIMITED (https://www.zaubacorp.com/company/INDIAN-IMMUNOLOGICALS-LIMITED/U72200TG1999PLC032666)
00064125	DEEPAK TIKKU (https://www.zaubacorp.com/director/DEEPAK-TIKKU/00064125)	MOTHER DAIRY INDIA LIMITED (https://www.zaubacorp.com/company/MOTHER-DAIRY-INDIA-LIMITED/U74899DL2003PLC119645)
00064125	DEEPAK TIKKU (https://www.zaubacorp.com/director/DEEPAK-TIKKU/00064125)	DAIRY HEALTH AND NUTRITION INITIATIVE INDIA FOUNDATION (https://www.zaubacorp.com/company/DAIRY-HEALTH-AND-NUTRITION-INITIATIVE-INDIA-FOUNDATION/U74999RJ2016NPL055879)

Showing 1 to 11 of 11 entries

[Previous](#) [1](#) [Next](#)

All Companies (<https://www.zaubacorp.com/companybrowse>) \ All Directors (<https://www.zaubacorp.com/directorsbrowse>) \ All Trademarks (<https://www.zaubacorp.com/trademarkbrowse>) \ Septaz (https://www.septaz.com?utm_campaign=referral&utm_medium=zaubacorp&utm_source=footer) \ Import Export Data (https://www.zaubacorp.com?utm_campaign=referral&utm_medium=zaubacorp&utm_source=footer) \ About Us (https://zauba.com/company/?utm_campaign=referral&utm_medium=zaubacorp&utm_source=footer) \ FAQ (<https://www.zaubacorp.com/faq>) \ Privacy Policy (<https://www.zaubacorp.com/privacy-policy>) \ Terms of Use (<https://www.zaubacorp.com/terms>) \ Refunds & Cancellation (<https://www.zaubacorp.com/refunds-cancellation>) \ Contact US (<https://www.zaubacorp.com/contact-us>)
© 2013 Zauba Technologies & Data Services Private Limited. All rights reserved.

<https://www.facebook.com/zaubatechnologies><https://twitter.com/wearezauba><https://www.linkedin.com/company/zauba>



(/)

Products ▾

Careers (https://zauba.company/careers.html?utm_campaign=referral&utm_medium=zaubacorp&utm_source=careers)

Sign In (<https://www.zaubacorp.com/user/login?destination=director/DILIP-RATH/05163623>)

Sign Up (<https://www.zaubacorp.com/user/register?destination=director/DILIP-RATH/05163623>)

Company Director Trademark Address

Enter company name or cin

[Browse Companies by Activity, Age and Location \(https://www.zaubacorp.com/company-list\)](https://www.zaubacorp.com/company-list)

Home (<https://www.zaubacorp.com>) › Director Profile



DILIP RATH

About DILIP RATH

Dilip Rath is registered with Ministry of Corporate Affairs (MCA). Their DIN is 05163623. Following is their current and past directorship holdings.

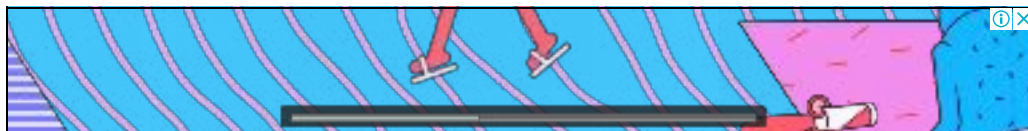
Companies Associated With

Company	Designation	Original Date of Appointment
NDDB DAIRY SERVICES (https://www.zaubacorp.com/company/NDDB-DAIRY-SERVICES/U01403DL2009NPL195142)	Director	27 January 2012
MOTHER DAIRY FRUIT AND VEGETABLE PRIVATE LIMITED (https://www.zaubacorp.com/company/MOTHER-DAIRY-FRUIT-AND-VEGETABLE-PRIVATE-LIMITED/U15209DL2000PTC104671)	Director	26 March 2012
IDMC LIMITED (https://www.zaubacorp.com/company/IDMC-LIMITED/U29299GJ1992PLC018283)	Director	21 December 2011
INDIAN IMMUNOLOGICALS LIMITED (https://www.zaubacorp.com/company/INDIAN-IMMUNOLOGICALS-LIMITED/U72200TG1999PLC032666)	Director	15 April 2012

Past Companies Associated With

Company	Designation	Original Date of Appointment	Date of Cessation
---------	-------------	------------------------------	-------------------

Login (<https://www.zaubacorp.com/user/login?destination=director/DILIP-RATH/05163623>) to view this information.



[All Companies \(https://www.zaubacorp.com/companybrowse\)](https://www.zaubacorp.com/companybrowse) \
 [All Directors \(https://www.zaubacorp.com/directorsbrowse\)](https://www.zaubacorp.com/directorsbrowse) \
 [All Trademarks \(https://www.zaubacorp.com/trademarkbrowse\)](https://www.zaubacorp.com/trademarkbrowse) \
 [Septaz \(https://www.septaz.com?utm_campaign=referral&utm_medium=zaubacorp&utm_source=footer\)](https://www.septaz.com?utm_campaign=referral&utm_medium=zaubacorp&utm_source=footer) \
 [Import Export Data \(https://www.zaubacorp.com/import-export-data\)](https://www.zaubacorp.com/import-export-data) \
 [About Us \(https://www.zaubacorp.com/about-us\)](https://www.zaubacorp.com/about-us) \
 [FAQ \(https://www.zaubacorp.com/faq\)](https://www.zaubacorp.com/faq) \
 [Privacy Policy \(https://www.zaubacorp.com/privacy-policy\)](https://www.zaubacorp.com/privacy-policy) \
 [Terms of Use \(https://www.zaubacorp.com/terms\)](https://www.zaubacorp.com/terms) \
 [Refunds & Cancellation \(https://www.zaubacorp.com/refunds-cancellation\)](https://www.zaubacorp.com/refunds-cancellation) \
 [Contact US \(https://www.zaubacorp.com/contact-us\)](https://www.zaubacorp.com/contact-us)

© 2013 Zauba Technologies & Data Services Private Limited. All rights reserved.



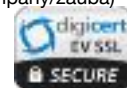
(<https://www.facebook.com/zaubatechnologies>)



(<https://twitter.com/wearezauba>)



(<https://www.linkedin.com/company/zauba>)



TOP OF PAGE


[Products](#)
[Careers \(https://zauba.company/careers.html?utm_campaign=referral&utm_medium=zaubacorp&utm_source=careers\)](https://zauba.company/careers.html?utm_campaign=referral&utm_medium=zaubacorp&utm_source=careers)
[Sign In \(https://www.zaubacorp.com/user/login?destination=director/SAMPATH-PARTHASARATHY/00337667\)](https://www.zaubacorp.com/user/login?destination=director/SAMPATH-PARTHASARATHY/00337667)
[Sign Up \(https://www.zaubacorp.com/user/register?destination=director/SAMPATH-PARTHASARATHY/00337667\)](https://www.zaubacorp.com/user/register?destination=director/SAMPATH-PARTHASARATHY/00337667)
 Company
 Director
 Trademark
 Address

Enter company name or cin

[Browse Companies by Activity, Age and Location \(https://www.zaubacorp.com/company-list\)](https://www.zaubacorp.com/company-list)
[Home \(https://www.zaubacorp.com\)](https://www.zaubacorp.com) › Director Profile

SAMPATH PARTHASARATHY

About SAMPATH PARTHASARATHY

Sampath Parthasarathy is registered with Ministry of Corporate Affairs (MCA). Their DIN is 00337667. Following is their current and past directorship holdings.

Companies Associated With

Company	Designation	Original Date of Appointment
NDDB DAIRY SERVICES (https://www.zaubacorp.com/company/NDDB-DAIRY-SERVICES/U01403DL2009NPL195142)	Director	18 March 2011
MOTHER DAIRY FOODS PROCESSING LIMITED (https://www.zaubacorp.com/company/MOTHER-DAIRY-FOODS-PROCESSING-LIMITED/U15419DL2002PLC115531)	Director	01 August 2002
MOTHER DAIRY INDIA LIMITED (https://www.zaubacorp.com/company/MOTHER-DAIRY-INDIA-LIMITED/U74899DL2003PLC119645)	Director	25 April 2003

Past Companies Associated With

Company	Designation	Original Date of Appointment	Date of Cessation
---------	-------------	------------------------------	-------------------

Login (<https://www.zaubacorp.com/user/login?destination=director/SAMPATH-PARTHASARATHY/00337667>) to view this information.

All Companies (<https://www.zaubacorp.com/companybrowse>) \ All Directors (<https://www.zaubacorp.com/directorsbrowse>) \ All Trademarks (<https://www.zaubacorp.com/trademarkbrowse>) \ Septaz (https://www.septaz.com?utm_campaign=referral&utm_medium=zaubacorp&utm_source=footer) \ Import Export Data (<https://www.zaubacorp.com/import-export-data>) \ About Us (<https://zauba.com/about-us>) \ FAQ (<https://www.zaubacorp.com/faq>) \ Privacy Policy (<https://www.zaubacorp.com/privacy-policy>) \ Terms of Use (<https://www.zaubacorp.com/terms>) \ Refunds & Cancellation (<https://www.zaubacorp.com/refunds-cancellation>) \ Contact US (<https://www.zaubacorp.com/contact-us>)
© 2013 Zauba Technologies & Data Services Private Limited. All rights reserved.



(<https://www.facebook.com/zaubatechnologies>)



(<https://twitter.com/wearezauba>)



(<https://www.linkedin.com/company/zauba>)



TOP OF PAGE

Member Search:

First Name
 Last Name
 Member Type
 Membership Number
 CP Number
 Indian City/Foreign Country
 Organisation
 Address 2
 Address 3
 Email

Search **Clear**

Total No. of Results : 1



SH. KISHOR SHANTILAL MEHTA

Organization	
Designation	NA
Membership Number	F1603
CP Number	0
Benevolent Member	Yes

Address	34 ORBIT TOWER, 3RD FLOOR OPPOSITE JAIN UPASRA, STREET NO.8 ROYAL PARK
City	RAJKOT
Phone	9810553615
Email	mehtakishorin@yahoo.com
Mobile	9810553615



Products ▾

Careers (https://zauba.company/careers.html?utm_campaign=referral&utm_medium=zaubacorp&utm_source=careers)

Sign In (<https://www.zaubacorp.com/user/login?destination=company/MOTHER-DAIRY-FRUIT-AND-VEGETABLE-PRIVATE-LIMITED/U15209DL2000PTC104671>)

Sign Up (<https://www.zaubacorp.com/user/register?destination=company/MOTHER-DAIRY-FRUIT-AND-VEGETABLE-PRIVATE-LIMITED/U15209DL2000PTC104671>)

Company Director Trademark Address

Enter company name or cin

[Browse Companies by Activity, Age and Location \(https://www.zaubacorp.com/company-list\)](https://www.zaubacorp.com/company-list)

Home (<https://www.zaubacorp.com>) - Mother Dairy Fruit And Vegetable Private Limited



MOTHER DAIRY FRUIT AND VEGETABLE PRIVATE LIMITED

As on: April 19, 2019

[Track this company](#)

[Basic Information \(https://www.zaubacorp.com/company/MOTHER-DAIRY-FRUIT-AND-VEGETABLE-PRIVATE-LIMITED/U15209DL2000PTC104671\)](https://www.zaubacorp.com/company/MOTHER-DAIRY-FRUIT-AND-VEGETABLE-PRIVATE-LIMITED/U15209DL2000PTC104671)

[Documents \(https://www.zaubacorp.com/documents/MOTHER-DAIRY-FRUIT-AND-VEGETABLE-PRIVATE-LIMITED/U15209DL2000PTC104671\)](https://www.zaubacorp.com/documents/MOTHER-DAIRY-FRUIT-AND-VEGETABLE-PRIVATE-LIMITED/U15209DL2000PTC104671)

[Trademarks \(https://www.zaubacorp.com/company-trademark/MOTHER-DAIRY-FRUIT-AND-VEGETABLE-PRIVATE-LIMITED/U15209DL2000PTC104671\)](https://www.zaubacorp.com/company-trademark/MOTHER-DAIRY-FRUIT-AND-VEGETABLE-PRIVATE-LIMITED/U15209DL2000PTC104671)

[Directors \(https://www.zaubacorp.com/company-directors/MOTHER-DAIRY-FRUIT-AND-VEGETABLE-PRIVATE-LIMITED/U15209DL2000PTC104671\)](https://www.zaubacorp.com/company-directors/MOTHER-DAIRY-FRUIT-AND-VEGETABLE-PRIVATE-LIMITED/U15209DL2000PTC104671)

[Map \(https://www.zaubacorp.com/company-map/MOTHER-DAIRY-FRUIT-AND-VEGETABLE-PRIVATE-LIMITED/U15209DL2000PTC104671/India\)](https://www.zaubacorp.com/company-map/MOTHER-DAIRY-FRUIT-AND-VEGETABLE-PRIVATE-LIMITED/U15209DL2000PTC104671/India)

Mother Dairy Fruit And Vegetable Private Limited is a Private incorporated on 24 March 2000. It is classified as Non-govt company and is registered at Registrar of Companies, Delhi. Its authorized share capital is Rs. 8,970,000,400 and its paid up capital is Rs. 2,500,000,770. It is involved in Manufacture of dairy product [production of raw milk is classified in class 0121]

Mother Dairy Fruit And Vegetable Private Limited's Annual General Meeting (AGM) was last held on 27 September 2018 and as per records from Ministry of Corporate Affairs (MCA), its balance sheet was last filed on 31 March 2018.

Directors of Mother Dairy Fruit And Vegetable Private Limited are Sangramsinh Raysangbhai Chaudhary, Deepak Tikku, Saugata Mitra, Dilip Rath, Roshan Louis Joseph, Sanjeev Khanna, .

Mother Dairy Fruit And Vegetable Private Limited's Corporate Identification Number is (CIN) U15209DL2000PTC104671 and its registration number is 104671. Its Email address is t.joseph@motherdairy.com and its registered address is MOTHER DAIRY, PATPARGANJ DELHI DL 110092 IN , - , .

Current status of Mother Dairy Fruit And Vegetable Private Limited is - Active.

Company Details

CIN	U15209DL2000PTC104671 (https://www.zaubacorp.com/company/MOTHER-DAIRY-FRUIT-AND-VEGETABLE-PRIVATE-LIMITED/U15209DL2000PTC104671)
Company Name	MOTHER DAIRY FRUIT AND VEGETABLE PRIVATE LIMITED
Company Status	Active
RoC	RoC-Delhi
Registration Number	104671
Company Category	Company limited by Shares
Company Sub Category	Non-govt company
Class of Company	Private
Date of Incorporation	24 March 2000
Age of Company	19 years, 1 month, 4 days
Activity	Manufacture of dairy product [production of raw milk is classified in class 0121] Click here (https://www.zaubacorp.com/company-list/nic-152-company.html) to see other companies involved in same activity.
Number of Members	-

Previous Names

Login (<https://www.zaubacorp.com/user/login?destination=company/MOTHER-DAIRY-FRUIT-AND-VEGETABLE-PRIVATE-LIMITED/U15209DL2000PTC104671>) to

Legal Report

View all criminal and civil cases of MOTHER DAIRY FRUIT AND VEGETABLE PRIVATE LIMITED

[Purchase Legal Report \(https://www.zaubacorp.com/lawsuit-add-to-cart/U15209D\)](https://www.zaubacorp.com/lawsuit-add-to-cart/U15209D)

Financial Report

Balance Sheet

Paid-up Capital	
Reserves & Surplus	
Long Term Borrowings	
Short Term Borrowings	
Trade Payables	
Current Investments	
Inventories	
Trade Receivables	
Cash and Bank Balances	

Profit & Loss

Total Revenue (Turnover)	
Total Expenses	
Employee Benefit Expenses	
Finance Costs	
Depriciation	
Profit Before Tax	
Profit After Tax	

Unlock complete report with historical financials and view all 2,032 documents for ₹499 only

[Add to Cart \(https://www.zaut\)](https://www.zaut)

Graphical report containing historical financial performance.

[view previous names](#)

[Click Here \(https://www.zaubacorp.com/company-report/L85110KA1981PLC013115\)](https://www.zaubacorp.com/company-report/L85110KA1981PLC013115) to view financial report of Infosys Ltd.

Previous CINS

Login (<https://www.zaubacorp.com/user/login?destination=company/MOTHER-DAIRY-FRUIT-AND-VEGETABLE-PRIVATE-LIMITED/U15209DL2000PTC104671>) to view previous cins

✔ Lifetime access to all documents

✔ Download all 2,032 documents in one click

✔ View Events Timeline - List of all company events since inception. [Click Here \(https://www.zaubacorp.com/company-events/L85110KA1981PLC013115\)](https://www.zaubacorp.com/company-events/L85110KA1981PLC013115) to view Events Timeline of Infosys Ltd.

Share Capital & Number of Employees

Authorised Capital ₹8,970,000,400

Paid up capital ₹2,500,000,770

Number of Employees [Login to view \(https://www.zaubacorp.com/user/login?destination=company/MOTHER-DAIRY-FRUIT-AND-VEGETABLE-PRIVATE-LIMITED/U15209DL2000PTC104671\)](https://www.zaubacorp.com/user/login?destination=company/MOTHER-DAIRY-FRUIT-AND-VEGETABLE-PRIVATE-LIMITED/U15209DL2000PTC104671)

Listing and Annual Compliance Details

Listing status	Unlisted
Date of Last Annual General Meeting	27 September 2018
Date of Latest Balance Sheet	31 March 2018

Contact Details

Email ID: t.joseph@motherdairy.com

Website: [Click here to add.](#)

Address:

MOTHER DAIRY, PATPARGANJ DELHI DL 110092 IN



Director Details

DIN	Director Name	Designation	Appointment Date	
01850128	SANGRAMSINH RAYSANGBHAI CHAUDHARY (https://www.zaubacorp.com/director/SANGRAMSINH-RAYSANGBHAI-CHAUDHARY/01850128)	Director	30 December 2014	View other directorships
00064125		Director		

	DEEPAK TIKKU (https://www.zaubacorp.com/director/DEEPAK-TIKKU/00064125)		22 March 2017	View other directorships
00541858	SAUGATA MITRA (https://www.zaubacorp.com/director/SAUGATA-MITRA/00541858)	Wholetime Director	22 March 2017	View other directorships
05163623	DILIP RATH (https://www.zaubacorp.com/director/DILIP-RATH/05163623)	Director	26 March 2012	View other directorships
02053857	ROSHAN LOUIS JOSEPH (https://www.zaubacorp.com/director/ROSHAN-LOUIS-JOSEPH/02053857)	Director	26 June 2018	View other directorships
02607765	SANJEEV KHANNA (https://www.zaubacorp.com/director/SANJEEV-KHANNA/02607765)	Managing Director	27 March 2009	View other directorships

Past Director Details

DIN	Director Name	Appointment Date	Cessation Date
-----	---------------	------------------	----------------

Login (<https://www.zaubacorp.com/user/login?destination=company/MOTHER-DAIRY-FRUIT-AND-VEGETABLE-PRIVATE-LIMITED/U15209DL2000PTC104671>) to view past directors.

Companies with Similar Address

CIN	Name	Address
U51222DL2003PLC151286	MOTHER DAIRY KERALA LIMITED (https://www.zaubacorp.com/company/MOTHER-DAIRY-KERALA-LIMITED/U51222DL2003PLC151286)	MOTHER DAIRY PATPARGANJ DELHI New Delhi DL 110092 IN
U15111DL2003PLC148224	MOTHER DAIRY UTTARANCHAL LIMITED (https://www.zaubacorp.com/company/MOTHER-DAIRY-UTTARANCHAL-LIMITED/U15111DL2003PLC148224)	MOTHER DAIRY PATPARGANJ DELHI New Delhi DL 110092 IN
U15111DL2003PLC148225	PARAG MILKFOODS (U.P.) LIMITED (https://www.zaubacorp.com/company/PARAG-MILKFOODS-U-P-LIMITED/U15111DL2003PLC148225)	MOTHER DAIRY PATPARGANJ DELHI New Delhi DL 110092 IN
U15121DL2003PLC148228	MOTHER DAIRY (A.P.) LIMITED (https://www.zaubacorp.com/company/MOTHER-DAIRY-A-P-LIMITED/U15121DL2003PLC148228)	MOTHER DAIRY PATPARGANJ DELHI New Delhi DL 110092 IN
U15419DL2002PLC115531	MOTHER DAIRY FOODS PROCESSING LIMITED (https://www.zaubacorp.com/company/MOTHER-DAIRY-FOODS-PROCESSING-LIMITED/U15419DL2002PLC115531)	IN THE PREMISES OF - MOTHER DAIRY PATPAR GANJ DELHI DL 110092 IN
U51909DL2006PLC234695	SAFAL NATIONAL EXCHANGE OF INDIA LIMITED (https://www.zaubacorp.com/company/SAFAL-NATIONAL-EXCHANGE-OF-INDIA-LIMITED/U51909DL2006PLC234695)	"MOTHER DAIRY" PATPARGANJ DELHI East Delhi DL 110092 IN
U80900DL2013PTC257084	AZURE GLOBAL TRAINING SERVICES PRIVATE LIMITED (https://www.zaubacorp.com/company/AZURE-GLOBAL-TRAINING-SERVICES-PRIVATE-LIMITED/U80900DL2013PTC257084)	110, Dhruva CGHS Patparganj, Mother Dairy Plant New Delhi East Delhi DL 110092 IN
U74899DL1995PTC074069	VAISHVI SURYANSH PRIVATE LIMITED (https://www.zaubacorp.com/company/VAISHVI-SURYANSH-PRIVATE-LIMITED/U74899DL1995PTC074069)	110,DHRUWA APPARTMENT,NEAR MOTHER DAIRY PATPARGANJ DELHI East Delhi DL 110092 IN

U74140DL2011PTC221523 ONS TOOLS AND ACCESSORIES PRIVATE LIMITED
 (https://www.zaubacorp.com/company/ONS-TOOLS-AND-ACCESSORIES-PRIVATE-LIMITED/U74140DL2011PTC221523)

HNO- C-89 PANDAV NAGAR
 PATPARGANJ OPPOSITE MOTHER
 DAIRY DELHI New Delhi DL 110092 IN

Address (https://www.zaubacorp.com/company-by-address/HNO-C-89-PANDAV-NAGAR-PATPARGANJ-OPPOSITE-MOTHER-DAIRY-DELHI-NEW-DELHI-DL-110092-IN-)

Prosecution Details

S.No.	Defaulting Entities	Court Name	Prosecution Section	Date Of Order	Status
No prosecutions found					

Charges/Borrowing Details

Charge ID	Creation Date	Modification Date	Closure Date	Assets Under Charge	Amount	Charge Holder
10001517	2006-03-08	-	2012-03-06		209,600,000	NATIONAL DAIRY DEVELOPMENT BOARD
10005751	2006-03-08	-	2012-08-06		54,689,000	NATIONAL DAIRY DEVELOPMENT BOARD
10025498	2006-10-30	2011-03-02	-		1,500,000,000	HDFC BANK LIMITED
10025499	2006-10-23	-	2008-08-20	Book debts; Floating charge; Movable property (not being pledge)	1,000,000,000	HDFC BANK LIMITED
10036942	2007-01-29	-	2008-08-20	Book debts; Floating charge; Movable property (not being pledge)	1,000,000,000	HDFC BANK LIMITED
10037926	2007-02-19	-	2007-07-04	Book debts; Floating charge; Movable property (not being pledge)	1,000,000,000	ICICI BANK LIMITED
10055253	2007-05-15	-	2009-02-20	Book debts	160,000,000	NATIONAL DAIRY DEVELOPMENT BOARD
10061684	2007-07-05	-	2009-04-29	Book debts	500,000,000	NATIONAL DAIRY DEVELOPMENT BOARD
10067119	2007-09-20	-	2016-08-02	Movable property (not being pledge)	53,340,000	National Dairy Development Board
10067185	2007-09-24	-	2009-02-05	Book debts	1,000,000,000	Punjab National Bank
10074286	2007-10-23	-	2009-04-29	Book debts	1,000,000,000	NATIONAL DAIRY DEVELOPMENT BOARD
10083124	-	-	-	Book debts	2,000,000,000	

	2008-01-07		2008-11-04				NATIONAL DAIRY DEVELOPMENT BOARD
10090821	2008-02-18	-	2009-01-06	Book debts	1,500,000,000		ICICI BANK LIMITED
10091265	2008-02-23	-	2016-08-02	Movable property (not being pledge)	70,000,000		NATIONAL DAIRY DEVELOPMENT BOARD
10095096	2008-03-04	2008-07-24	2009-01-06		1,500,000,000		ICICI BANK LIMITED
10097618	2008-03-27	-	2009-01-06	Book debts	1,000,000,000		ICICI BANK LIMITED
10124279	2008-09-23	-	2016-06-03	Immovable property or any interest therein	407,610,000		NATIONAL DAIRY DEVELOPMENT BOARD
10124832	2008-09-05	-	2014-12-04		1,000,000,000		Corporation Bank
10128369	2008-10-15	-	2009-04-29	Book debts	1,000,000,000		National Dairy Development Board
10140751	2009-01-15	-	2011-05-16	Book debts	1,000,000,000		Punjab National Bank
10142291	2009-02-04	-	2012-05-21	Book debts	320,000,000		National Dairy Development Board
10143086	2009-02-09	-	2009-10-28	Book debts	1,000,000,000		HDFC BANK LIMITED
10143626	2009-02-23	-	2011-05-19	Book debts	1,000,000,000		Axis Bank Limited
10144677	2009-02-13	2009-08-26	2012-02-08		3,500,000,000		3i Infotech Trusteeship Services Limited
10145863	2009-02-27	2012-01-31	2014-12-04		2,500,000,000		Corporation Bank
10151982	2009-03-27	2009-08-26	2012-02-08		600,000,000		3i Infotech Trusteeship Services Limited
10178336	2009-09-19	-	2011-05-19	Book debts	1,500,000,000		Axis Bank Limited
10185343		-		Book debts	500,000,000		State Bank of India

	2009- 10-30		2010- 02-19				
10187793	2009- 11-13	-	2011- 03-09	Book debts	1,500,000,000	HDFC BANK LIMITED	
10202225	2010- 01-27	-	2011- 05-18	Book debts	1,500,000,000	State Bank of India	
10236057	2010- 08-09	2019-02- 25	-	Book debts; Floating charge; Stock including raw material, Finished Goods	800,000,000	HDFC BANK LIMITED	
10270081	2011- 02-03	2012-02- 08	2012- 09-27		3,000,000,000	Axis Bank Limited	
10272821	2011- 03-02	-	2012- 01-19	Book debts	1,500,000,000	HDFC BANK LIMITED	
10320050	2011- 11-08	2012-12- 18	2015- 05-14		2,500,000,000	HDFC BANK LIMITED	
10324844	2011- 12-20	-	2012- 03-07	Book debts; Floating charge; Movable property (not being pledge)	100,000,000	Canara Bank	
10339369	2012- 02-17	-	2012- 06-02	Book debts; Floating charge	2,000,000,000	YES BANK LIMITED	
10339578	2012- 02-08	-	2012- 09-27	Book debts; Floating charge	500,000,000	Axis Bank	
10345438	2012- 03-07	-	2013- 12-16	Book debts; Floating charge	2,500,000,000	DENA BANK	
10348070	2012- 03-23	-	2016- 08-03	Movable property (not being pledge)	51,464,000	NATIONAL DAIRY DEVELOPMENT BOARD	
10348238	2012- 03-21	-	2012- 10-03	Movable property (not being pledge)	56,500,000	AXIS BANK	
10354903	2012- 05-03	-	2012- 12-28	Book debts	1,000,000,000	ICICI BANK LIMITED	
10356071	2012- 05-18	-	2013- 04-26	Book debts; Movable property (not being pledge)	250,000,000	AXIS BANK	
10378221	2012- 09-04	2015-10- 26	-		8,250,000,000	State Bank of India	
10428444			-	Book debts; Floating charge; Stocks	550,000,000	HDFC BANK LIMITED	

	2013-05-02	2019-02-08					
10437776	2013-06-25	-	2016-08-02	Immovable property or any interest therein	141,398,000	National Dairy Development Board	
10481135	2014-02-07	-	2016-06-03	Immovable property or any interest therein; Movable property (not being pledge)	782,602,000	National Dairy Development Board	
10509645	2014-06-16	2018-08-09	-	Term Deposits	297,600,000	State Bank of India	
10532570	2014-11-17	2019-01-23	-	Fixed Deposit	59,200,000	Punjab National Bank	
10544069	2015-01-05	-	2015-10-13	Movable property (not being pledge)	500,000,000	HDFC BANK LIMITED	
10557077	2015-01-30	2017-01-30	2018-02-15	Fixed Deposit	60,000,000	State Bank of India	
10562839	2015-03-06	-	-		1,356,900	Punjab National Bank	
10587022	2015-08-06	2016-07-06	-	Fixed Deposits	44,000,000	Punjab National Bank	
10595130	2015-09-30	-	-	Book debts; Floating charge	2,000,000,000	The Hongkong and Shanghai Banking Corporation Limited	
10607019	2015-11-16	2016-08-17	2017-04-23	Lien on Fixed Deposit	85,300,000	Punjab National Bank	
10625474	2016-02-23	-	2018-08-10	Book debts	1,000,000,000	ICICI BANK LIMITED	
80020501	2005-11-10	-	2007-01-15		1,500,000,000	HDFC BANK LIMITED	
80020505	2005-05-11	2005-11-10	2009-04-29		300,000,000	NATIONAL DAIRY DEVELOPMENT BOARD	
90050311	2004-01-02	-	2005-11-05	Book debts	2,000,000,000	HDFC BANK LIMITED	
90050320	2004-01-06	-	2004-10-25	Book debts; Movable property (not being pledge)	1,000,000,000	ICICI BANK LIMITED	

90051299	2005-02-10	-	2005-10-31	Book debts	1,000,000,000	HDFC BANK LIMITED
100066962	2016-11-24	-	-	Movable property (not being pledge)	500,000,000	HDFC BANK LIMITED
100197110	2018-07-27	-	-	Book debts; Current Assets	800,000,000	ICICI BANK LIMITED

Establishments Details

Establishment Name	City	Pincode	Address
MOTHER DAIRY FRUIT - VEGETABLE PRIVATE LTD	BELLARY	583201	UNIT HOSPET OIL PLANT,SNKALAPURIND AREA,BELLARY ROAD, HOSPETHOSPET648KN
MOTHER DAIRY FRUIT & VEGETABLE PRIVATE LIMITED	MEERUT	201313	UNIT PILKHUWA DAIRY 18 KM STONEGHAZIABAD HAPUR ROADPILKHUWA233UP
MOTHER DAIRY FRUIT AND VEGETABLE PRIVATE LIMITED	KRPURAMWHITEFIELD	560067	SY.NO.99,KHAJI SONNENAHALLIWHITEFIELDHOSKOTE HIGHWAY656KN

*Industry classification is derived from National Industrial Classification. If the company has changed line of business without intimating the Registrar or is a diversified business, classification may be different. We make no warranties about accuracy of industrial classification.

Update Information

We are adding and updating information about hundreds of thousands of companies every day, and periodically add companies to the queue for being updated. You can ask for a company to be added to the front of the queue for updating, especially useful if the address, directors, or other critical information has changed. Just click on the 'Update Information' button below to start the process.

[Update Information](https://www.zaubacorp.com/company-update/MOTHER-DAIRY-FRUIT-AND-VEGETABLE-PRIVATE-LIMITED/U15209DL2000PTC104671) (https://www.zaubacorp.com/company-update/MOTHER-DAIRY-FRUIT-AND-VEGETABLE-PRIVATE-LIMITED/U15209DL2000PTC104671)

All Companies (<https://www.zaubacorp.com/companybrowse>) \ All Directors (<https://www.zaubacorp.com/directorsbrowse>) \ All Trademarks (<https://www.zaubacorp.com/trademarkbrowse>) \ Septaz (https://www.septaz.com?utm_campaign=referral&utm_medium=zaubacorp&utm_source=footer) \ Import Export Data (https://www.zauba.com?utm_campaign=referral&utm_medium=zaubacorp&utm_source=footer) \ About Us (https://zauba.com/company/?utm_campaign=referral&utm_medium=zaubacorp&utm_source=footer) \ FAQ (<https://www.zaubacorp.com/faq>) \ Privacy Policy (<https://www.zaubacorp.com/privacy-policy>) \ Terms of Use (<https://www.zaubacorp.com/terms>) \ Refunds & Cancellation (<https://www.zaubacorp.com/refunds-cancellation>) \ Contact US (<https://www.zaubacorp.com/contact-us>)
© 2013 Zauba Technologies & Data Services Private Limited. All rights reserved.



(<https://www.facebook.com/zaubatechnologies>)



(<https://twitter.com/wearezauba>)



(<https://www.linkedin.com/company/zauba>)



[Products](#)[Careers \(https://zauba.company/careers.html?utm_campaign=referral&utm_medium=zaubacorp&utm_source=careers\)](https://zauba.company/careers.html?utm_campaign=referral&utm_medium=zaubacorp&utm_source=careers)[Sign In \(https://www.zaubacorp.com/user/login?destination=company/DHARA-VEGETABLE-OIL-AND-FOODS-COMPANY-LIMITED/U15141DL2000PLC173051\)](https://www.zaubacorp.com/user/login?destination=company/DHARA-VEGETABLE-OIL-AND-FOODS-COMPANY-LIMITED/U15141DL2000PLC173051)[Sign Up \(https://www.zaubacorp.com/user/register?destination=company/DHARA-VEGETABLE-OIL-AND-FOODS-COMPANY-LIMITED/U15141DL2000PLC173051\)](https://www.zaubacorp.com/user/register?destination=company/DHARA-VEGETABLE-OIL-AND-FOODS-COMPANY-LIMITED/U15141DL2000PLC173051)

Company Director Trademark Address

Enter company name or cin

[Browse Companies by Activity, Age and Location \(https://www.zaubacorp.com/company-list\)](https://www.zaubacorp.com/company-list)

[Home \(https://www.zaubacorp.com\)](https://www.zaubacorp.com) - Dhara Vegetable Oil And Foods Company Limited



DHARA VEGETABLE OIL AND FOODS COMPANY LIMITED

As on: April 21, 2019

[Track this company](#)

[Basic Information \(https://www.zaubacorp.com/company/DHARA-VEGETABLE-OIL-AND-FOODS-COMPANY-LIMITED/U15141DL2000PLC173051\)](https://www.zaubacorp.com/company/DHARA-VEGETABLE-OIL-AND-FOODS-COMPANY-LIMITED/U15141DL2000PLC173051)

[Documents \(https://www.zaubacorp.com/documents/DHARA-VEGETABLE-OIL-AND-FOODS-COMPANY-LIMITED/U15141DL2000PLC173051\)](https://www.zaubacorp.com/documents/DHARA-VEGETABLE-OIL-AND-FOODS-COMPANY-LIMITED/U15141DL2000PLC173051)

[Trademarks \(https://www.zaubacorp.com/company-trademark/DHARA-VEGETABLE-OIL-AND-FOODS-COMPANY-LIMITED/U15141DL2000PLC173051\)](https://www.zaubacorp.com/company-trademark/DHARA-VEGETABLE-OIL-AND-FOODS-COMPANY-LIMITED/U15141DL2000PLC173051)

[Directors \(https://www.zaubacorp.com/company-directors/DHARA-VEGETABLE-OIL-AND-FOODS-COMPANY-LIMITED/U15141DL2000PLC173051\)](https://www.zaubacorp.com/company-directors/DHARA-VEGETABLE-OIL-AND-FOODS-COMPANY-LIMITED/U15141DL2000PLC173051)

[Map \(https://www.zaubacorp.com/company-map/DHARA-VEGETABLE-OIL-AND-FOODS-COMPANY-LIMITED/U15141DL2000PLC173051/India\)](https://www.zaubacorp.com/company-map/DHARA-VEGETABLE-OIL-AND-FOODS-COMPANY-LIMITED/U15141DL2000PLC173051/India)

Dhara Vegetable Oil And Foods Company Limited is a Public incorporated on 11 December 2000. It is classified as Non-govt company and is registered at Registrar of Companies, Delhi. Its authorized share capital is Rs. 4,499,999,700 and its paid up capital is Rs. 1,000,000,700. It is involved in Production,

processing and preservation of meat, fish, fruit vegetables, oils and fats.

Dhara Vegetable Oil And Foods Company Limited's Annual General Meeting (AGM) was last held on 03 July 2007 and as per records from Ministry of Corporate Affairs (MCA), its balance sheet was last filed on 31 March 2007.

Directors of Dhara Vegetable Oil And Foods Company Limited are Harish Chandra Virmani, Deepak Tikku, Amrita Hirubhai Patel, Ashoke Bijapurkar, Subramaniam Ramachandran Iyer, Viswanathan Ramachandran and Ramachandran Nathan Kutty.

Dhara Vegetable Oil And Foods Company Limited's Corporate Identification Number is (CIN) U15141DL2000PLC173051 and its registration number is 173051. Its Email address is vmpatel@dhara.com and its registered address is NDDB House Safdarjung Enclave NEW DELHI South Delhi DL 110029 IN , - , .

Current status of Dhara Vegetable Oil And Foods Company Limited is - Amalgamated.

Company Details

CIN	U15141DL2000PLC173051 (https://www.zaubacorp.com/company/DHARA-VEGETABLE-OIL-AND-FOODS-COMPANY-LIMITED/U15141DL2000PLC173051)
Company Name	DHARA VEGETABLE OIL AND FOODS COMPANY LIMITED
Company Status	Amalgamated
RoC	RoC-Delhi
Registration Number	173051
Company Category	Company limited by Shares
Company Sub Category	Non-govt company
Class of Company	Public
Date of Incorporation	11 December 2000
Age of Company	18 years, 4 month, 17 days
Activity	Production, processing and preservation of meat, fish, fruit vegetables, oils and fats. Click here (https://www.zaubacorp.com/company-list/nic-151-company.html) to see other companies involved in same activity.
Number of Members	7

Previous Names

Login (<https://www.zaubacorp.com/user/login?destination=company/DHARA-VEGETABLE-OIL-AND-FOODS-COMPANY-LIMITED/U15141DL2000PLC173051>) to view previous names

Legal Report

View all criminal and civil cases of DHARA VEGETABLE OIL AND FOODS COMPANY LIMITED

[Purchase Legal Report \(https://www.zaubacorp.com/lawsuit-add-to-cart/U15141D\)](https://www.zaubacorp.com/lawsuit-add-to-cart/U15141D)

Financial Report

Balance Sheet

Paid-up Capital	
Reserves & Surplus	
Long Term Borrowings	
Short Term Borrowings	
Trade Payables	
Current Investments	
Inventories	
Trade Receivables	
Cash and Bank Balances	

Profit & Loss

Total Revenue (Turnover)	
Total Expenses	
Employee Benefit Expenses	
Finance Costs	
Depriciation	
Profit Before Tax	
Profit After Tax	

Unlock complete report with historical financials and view all 135 documents for ₹499 only

[Add to Cart \(https://www.zaut\)](https://www.zaut)

Graphical report containing historical financial performance. Click Here (<https://www.zaubacorp.com/company-report/L85110KA1981PLC013115>) to view financial report of

Previous CINS

Login (<https://www.zaubacorp.com/user/login?destination=company/DHARA-VEGETABLE-OIL-AND-FOODS-COMPANY-LIMITED/U15141DL2000PLC173051>) to view previous cins

Infosys Ltd.

- ✔ Lifetime access to all documents
- ✔ Download all 135 documents in one click
- ✔ View Events Timeline - List of all company events since inception. Click Here (<https://www.zaubacorp.com/company-events/L85110KA1981PLC013115>) to view Events Timeline of Infosys Ltd.

Share Capital & Number of Employees

Authorised Capital ₹4,499,999,700

Paid up capital ₹1,000,000,700

Number of Employees Login to view (<https://www.zaubacorp.com/user/login?destination=company/DHARA-VEGETABLE-OIL-AND-FOODS-COMPANY-LIMITED/U15141DL2000PLC173051>)

Listing and Annual Compliance Details

Listing status	Unlisted
Date of Last Annual General Meeting	03 July 2007
Date of Latest Balance Sheet	31 March 2007



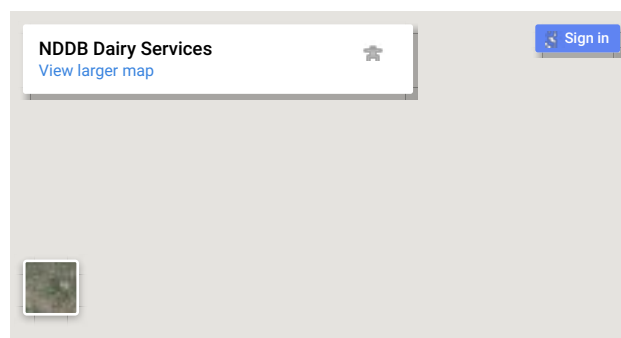
Contact Details

Email ID: vm Patel@dhara.com

Website: Click here to add.

Address:

NDDB House Safdarjung Enclave NEW DELHI South Delhi DL 110029 IN



Director Details

DIN	Director Name	Designation	Appointment Date	
00328395	HARISH CHANDRA VIRMANI (https://www.zaubacorp.com/director/HARISH-CHANDRA-VIRMANI/00328395)	Managing Director	07 June 2006	View other directorships
00064125	DEEPAK TIKKU (https://www.zaubacorp.com/director/DEEPAK-	Director	11	View other

	TIKKU/00064125)		December 2000	directorships
00065052	AMRITA HIRUBHAI PATEL (https://www.zaubacorp.com/director/AMRITA-HIRUBHAI-PATEL/00065052)	Director	11 December 2000	View other directorships
00213155	ASHOKE BIJAPURKAR (https://www.zaubacorp.com/director/ASHOKE-BIJAPURKAR/00213155)	Director	07 July 2003	View other directorships
00580437	SUBRAMANIAM RAMACHANDRAN IYER (https://www.zaubacorp.com/director/SUBRAMANIAM-RAMACHANDRAN-IYER/00580437)	Director	07 July 2003	View other directorships
00581800	VISWANATHAN RAMACHANDRAN (https://www.zaubacorp.com/director/VISWANATHAN-RAMACHANDRAN/00581800)	Director	13 April 2004	View other directorships
00088397	RAMACHANDRAN NATHAN KUTTY (https://www.zaubacorp.com/director/RAMACHANDRAN-NATHAN-KUTTY/00088397)	Director	13 December 2004	View other directorships

Past Director Details

DIN	Director Name	Appointment Date	Cessation Date
-----	---------------	------------------	----------------

Login (<https://www.zaubacorp.com/user/login?destination=company/DHARA-VEGETABLE-OIL-AND-FOODS-COMPANY-LIMITED/U15141DL2000PLC173051>) to view past directors.

Companies with Similar Address

CIN	Name	Address
U70100DL2016PTC299984	EXPERTPRO REALTY PRIVATE LIMITED (https://www.zaubacorp.com/company/EXPERTPRO-REALTY-PRIVATE-LIMITED/U70100DL2016PTC299984)	192C, ARJUN NAGAR SAFDARJUNG ENCLAVE NEW DELHI South Delhi NEW DELHI South Delhi DL 110029 IN
AAL-8025	A P T AND CO LLP (https://www.zaubacorp.com/company/A-P-T-AND-CO-LLP/AAL-8025)	A-2/36, Third Floor, Safdarjung Enclave, South West Delhi, New Delhi, NEW DELHI South West Delhi DL 110029 IN
U55209DL2017PTC317877	KYONG ETSOYI INDIA PRIVATE LIMITED (https://www.zaubacorp.com/company/KYONG-ETSOYI-INDIA-PRIVATE-LIMITED/U55209DL2017PTC317877)	112 SECOND FLOOR HUMAYUNPUR SAFDARJUNG ENCLAVE NEW DELHI 110029 NEW DELHI South Delhi DL 110029 IN
U74999DL2016PTC291868	FOREVERFIT SOLUTIONS PRIVATE LIMITED (https://www.zaubacorp.com/company/FOREVERFIT-SOLUTIONS-PRIVATE-LIMITED/U74999DL2016PTC291868)	B-2/211 Safdarjung Enclave, New Delhi-110029 New Delhi South West Delhi DL 110029 IN
U74899DL1981PTC011392	SIMAR INVESTMENTS PRIVATE LIMITED (https://www.zaubacorp.com/company/SIMAR-INVESTMENTS-PRIVATE-LIMITED/U74899DL1981PTC011392)	A 2-17, SAFDARJUNG ENCLAVE NEW DELHI-110029 NEW DELHI South Delhi DL 110029 IN
U74140DL2012PTC237755	FLUORESCENCE COMMUNICATIONS PRIVATE LIMITED (https://www.zaubacorp.com/company/FLUORESCENCE-COMMUNICATIONS-PRIVATE-LIMITED/U74140DL2012PTC237755)	B4/183A, SAFDARJUNG ENCLAVE, NEW DELHI - 110029 NEW DELHI South West Delhi DL 110029 IN

U45400DL2007PTC167967	SHINE PROPERTIES PRIVATE LIMITED (https://www.zaubacorp.com/company/SHINE-PROPERTIES-PRIVATE-LIMITED/U45400DL2007PTC167967)	B-7/11, SAFDARJUNG ENCLAVE NEW DELHI NEW DELHI South Delhi DL 110029 IN
U29190DL2017PTC315426	TEXAS MECHATRONICS PRIVATE LIMITED (https://www.zaubacorp.com/company/TEXAS-MECHATRONICS-PRIVATE-LIMITED/U29190DL2017PTC315426)	B-7/45, SAFDARJUNG ENCLAVE, NEW DELHI NEW DELHI South Delhi DL 110029 IN
U72900DL2013PTC252725	AVANZADO TECHNOLOGIES PRIVATE LIMITED (https://www.zaubacorp.com/company/AVANZADO-TECHNOLOGIES-PRIVATE-LIMITED/U72900DL2013PTC252725)	A-1/91, SAFDARJUNG ENCLAVE NEW DELHI NEW DELHI South West Delhi DL 110029 IN

th similar address (<https://www.zaubacorp.com/company-by-address/A-1-91-SAFDARJUNG-ENCLAVE-NEW-DELHI-NEW-DELHI-SOUTH-WEST-DELHI-DL-110029-IN->)

Prosecution Details

S.No.	Defaulting Entities	Court Name	Prosecution Section	Date Of Order	Status
No prosecutions found					

Charges/Borrowing Details

Charge ID	Creation Date	Modification Date	Closure Date	Assets Under Charge	Amount	Charge Holder
No charges found						

Establishments Details

Establishment Name	City	Pincode	Address
No establishments found			

*Industry classification is derived from National Industrial Classification. If the company has changed line of business without intimating the Registrar or is a diversified business, classification may be different. We make no warranties about accuracy of industrial classification.

Update Information

We are adding and updating information about hundreds of thousands of companies every day, and periodically add companies to the queue for being updated. You can ask for a company to be added to the front of the queue for updating, especially useful if the address, directors, or other critical information has changed. Just click on the 'Update Information' button below to start the process.

[Update Information](https://www.zaubacorp.com/company-update/DHARA-VEGETABLE-OIL-AND-FOODS-COMPANY-LIMITED/U15141DL2000PLC173051) (<https://www.zaubacorp.com/company-update/DHARA-VEGETABLE-OIL-AND-FOODS-COMPANY-LIMITED/U15141DL2000PLC173051>)

All Companies (<https://www.zaubacorp.com/companybrowse>) \ All Directors (<https://www.zaubacorp.com/directorsbrowse>) \ All Trademarks (<https://www.zaubacorp.com/trademarkbrowse>) \ Septaz (https://www.septaz.com?utm_campaign=referral&utm_medium=zaubacorp&utm_source=footer) \ Import Export Data (https://www.zaubacorp.com?utm_campaign=referral&utm_medium=zaubacorp&utm_source=footer) \ About Us (https://zauba.com/company/?utm_campaign=referral&utm_medium=zaubacorp&utm_source=footer) \ FAQ (<https://www.zaubacorp.com/faq>) \ Privacy Policy (<https://www.zaubacorp.com/privacy-policy>) \ Terms of Use (<https://www.zaubacorp.com/terms>) \ Refunds & Cancellation (<https://www.zaubacorp.com/refunds-cancellation>) \ Contact US (<https://www.zaubacorp.com/contact-us>)
© 2013 Zauba Technologies & Data Services Private Limited. All rights reserved.



(<https://www.facebook.com/zaubatechnologies>)



(<https://twitter.com/wearezauba>)



(<https://www.linkedin.com/company/zauba>)



[Products](#)[Careers \(https://zauba.company/careers.html?utm_campaign=referral&utm_medium=zaubacorp&utm_source=careers\)](https://zauba.company/careers.html?utm_campaign=referral&utm_medium=zaubacorp&utm_source=careers)[Sign In \(https://www.zaubacorp.com/user/login?destination=company/MOTHER-DAIRY-LIMITED/U15201DL2002PLC116845\)](https://www.zaubacorp.com/user/login?destination=company/MOTHER-DAIRY-LIMITED/U15201DL2002PLC116845)[Sign Up \(https://www.zaubacorp.com/user/register?destination=company/MOTHER-DAIRY-LIMITED/U15201DL2002PLC116845\)](https://www.zaubacorp.com/user/register?destination=company/MOTHER-DAIRY-LIMITED/U15201DL2002PLC116845)[Company](#) [Director](#) [Trademark](#) [Address](#)

Enter company name or cin

[Browse Companies by Activity, Age and Location \(https://www.zaubacorp.com/company-list\)](https://www.zaubacorp.com/company-list)[Home \(https://www.zaubacorp.com\)](https://www.zaubacorp.com) - Mother Dairy Delhi Limited

MOTHER DAIRY DELHI LIMITED

As on: April 20, 2019

[Track this company](#)[Basic Information \(https://www.zaubacorp.com/company/MOTHER-DAIRY-LIMITED/U15201DL2002PLC116845\)](https://www.zaubacorp.com/company/MOTHER-DAIRY-LIMITED/U15201DL2002PLC116845)[Documents \(https://www.zaubacorp.com/documents/MOTHER-DAIRY-LIMITED/U15201DL2002PLC116845\)](https://www.zaubacorp.com/documents/MOTHER-DAIRY-LIMITED/U15201DL2002PLC116845)[Trademarks \(https://www.zaubacorp.com/company-trademark/MOTHER-DAIRY-LIMITED/U15201DL2002PLC116845\)](https://www.zaubacorp.com/company-trademark/MOTHER-DAIRY-LIMITED/U15201DL2002PLC116845)[Directors \(https://www.zaubacorp.com/company-directors/MOTHER-DAIRY-LIMITED/U15201DL2002PLC116845\)](https://www.zaubacorp.com/company-directors/MOTHER-DAIRY-LIMITED/U15201DL2002PLC116845)[Map \(https://www.zaubacorp.com/company-map/MOTHER-DAIRY-LIMITED/U15201DL2002PLC116845/India\)](https://www.zaubacorp.com/company-map/MOTHER-DAIRY-LIMITED/U15201DL2002PLC116845/India)

Mother Dairy Delhi Limited is a Public incorporated on 05 September 2002. It is classified as Non-govt company and is registered at Registrar of Companies, Delhi. Its authorized share capital is Rs. 20,000,000 and its paid up capital is Rs. 500,000. It is involved in Manufacture of dairy product [production of raw milk is classified in class 0121]

Mother Dairy Delhi Limited's Annual General Meeting (AGM) was last held on N/A and as per records from Ministry of Corporate Affairs (MCA), its balance sheet was last filed on N/A.

Mother Dairy Delhi Limited's Corporate Identification Number is (CIN) U15201DL2002PLC116845 and its registration number is 116845. Its Email address is and its registered address is MOTHER DAIRY, PATPARGANJ, DELHI DL 110092 IN , - , .

Current status of Mother Dairy Delhi Limited is - Amalgamated.

[Company Details](#)[Legal Report](#)

CIN	U15201DL2002PLC116845 (https://www.zaubacorp.com/company/MOTHER-LIMITED-DAIRY-LIMITED/U15201DL2002PLC116845)	View all criminal and civil cases of MOTHER DAIRY DELHI
Company Name	MOTHER DAIRY DELHI LIMITED	Purchase Legal Report (https://www.zaubacorp.com/lawsuit-add-to-cart/U15201D)
Company Status	Amalgamated	Financial Report
RoC	RoC-Delhi	Balance Sheet
Registration Number	116845	Paid-up Capital
Company Category	Company limited by Shares	Reserves & Surplus
Company Sub Category	Non-govt company	Long Term Borrowings
Class of Company	Public	Short Term Borrowings
Date of Incorporation	05 September 2002	Trade Payables
Age of Company	16 years, 7 month, 23 days	Current Investments
Activity	Manufacture of dairy product [production of raw milk is classified in class 0121] Click here (https://www.zaubacorp.com/company-list/nic-152-company.html) to see other companies involved in same activity.	Inventories
Number of Members	-	Trade Receivables
Previous Names		Cash and Bank Balances
Login (https://www.zaubacorp.com/user/login?destination=company/MOTHER-DAIRY-LIMITED/U15201DL2002PLC116845) to view previous names		Profit & Loss
Previous CINS		Total Revenue (Turnover)
Login (https://www.zaubacorp.com/user/login?destination=company/MOTHER-DAIRY-LIMITED/U15201DL2002PLC116845) to view previous cins		Total Expenses
Share Capital & Number of Employees		Employee Benefit Expenses
Authorised Capital	₹20,000,000	Finance Costs
	₹500,000	Depriciation
		Profit Before Tax
		Profit After Tax
		Unlock complete report with historical financials and view all 12 documents for ₹499 only
		Graphical report containing historical financial performance. Click Here (https://www.zaubacorp.com/company-report/L85110KA1981PLC013115) to view financial report of Infosys Ltd.
		Lifetime access to all documents
		Download all 12 documents in one click
		View Events Timeline - List of all company events since inception. Click Here (https://www.zaubacorp.com/company-events/L85110KA1981PLC013115) to view Events Timeline of Infosys Ltd.
		Add to Cart (https://www.zaubacorp.com/lawsuit-add-to-cart/U15201D)

Paid up
capital

Number of Employees [Login to view \(https://www.zaubacorp.com/user/login?destination=company/MOTHER-DAIRY-LIMITED/U15201DL2002PLC116845\)](https://www.zaubacorp.com/user/login?destination=company/MOTHER-DAIRY-LIMITED/U15201DL2002PLC116845)

Listing and Annual Compliance Details

Listing status	Unlisted
Date of Last Annual General Meeting	N/A
Date of Latest Balance Sheet	N/A

Contact Details

Email ID: -

Website: [Click here to add.](#)

Address:

MOTHER DAIRY, PATPARGANJ, DELHI DL 110092 IN



Director Details

DIN	Director Name	Designation	Appointment Date
-----	---------------	-------------	------------------

Directors not found.

Past Director Details

DIN	Director Name	Appointment Date	Cessation Date
-----	---------------	------------------	----------------

[Login \(https://www.zaubacorp.com/user/login?destination=company/MOTHER-DAIRY-LIMITED/U15201DL2002PLC116845\)](https://www.zaubacorp.com/user/login?destination=company/MOTHER-DAIRY-LIMITED/U15201DL2002PLC116845) to view past directors.

Companies with Similar Address

CIN	Name	Address
U51222DL2003PLC151286	MOTHER DAIRY KERALA LIMITED (https://www.zaubacorp.com/company/MOTHER-DAIRY-KERALA-LIMITED/U51222DL2003PLC151286)	MOTHER DAIRY PATPARGANJ DELHI New Delhi DL 110092 IN
U15111DL2003PLC148224	MOTHER DAIRY UTTARANCHAL LIMITED (https://www.zaubacorp.com/company/MOTHER-DAIRY-UTTARANCHAL-)	MOTHER DAIRY PATPARGANJ DELHI New Delhi DL 110092 IN

LIMITED/U15111DL2003PLC148224)		
U15111DL2003PLC148225	PARAG MILKFOODS (U.P.) LIMITED (https://www.zaubacorp.com/company/PARAG-MILKFOODS-U-P-LIMITED/U15111DL2003PLC148225)	MOTHER DAIRY PATPARGANJ DELHI New Delhi DL 110092 IN
U15121DL2003PLC148228	MOTHER DAIRY (A.P.) LIMITED (https://www.zaubacorp.com/company/MOTHER-DAIRY-A-P-LIMITED/U15121DL2003PLC148228)	MOTHER DAIRY PATPARGANJ DELHI New Delhi DL 110092 IN
U15419DL2002PLC115531	MOTHER DAIRY FOODS PROCESSING LIMITED (https://www.zaubacorp.com/company/MOTHER-DAIRY-FOODS-PROCESSING-LIMITED/U15419DL2002PLC115531)	IN THE PREMISES OF - MOTHER DAIRY PATPAR GANJ DELHI DL 110092 IN
U51909DL2006PLC234695	SAFAL NATIONAL EXCHANGE OF INDIA LIMITED (https://www.zaubacorp.com/company/SAFAL-NATIONAL-EXCHANGE-OF-INDIA-LIMITED/U51909DL2006PLC234695)	"MOTHER DAIRY" PATPARGANJ DELHI East Delhi DL 110092 IN
U80900DL2013PTC257084	AZURE GLOBAL TRAINING SERVICES PRIVATE LIMITED (https://www.zaubacorp.com/company/AZURE-GLOBAL-TRAINING-SERVICES-PRIVATE-LIMITED/U80900DL2013PTC257084)	110, Dhruva CGHS Patparganj, Mother Dairy Plant New Delhi East Delhi DL 110092 IN
U74899DL1995PTC074069	VAISHVI SURYANSH PRIVATE LIMITED (https://www.zaubacorp.com/company/VAISHVI-SURYANSH-PRIVATE-LIMITED/U74899DL1995PTC074069)	110,DHRUWA APPARTMENT,NEAR MOTHER DAIRY PATPARGANJ DELHI East Delhi DL 110092 IN
U74140DL2011PTC221523	ONS TOOLS AND ACCESSORIES PRIVATE LIMITED (https://www.zaubacorp.com/company/ONS-TOOLS-AND-ACCESSORIES-PRIVATE-LIMITED/U74140DL2011PTC221523)	HNO- C-89 PANDAV NAGAR PATPARGANJ OPPOSITE MOTHER DAIRY DELHI New Delhi DL 110092 IN

Address (https://www.zaubacorp.com/company-by-address/HNO-C-89-PANDAV-NAGAR-PATPARGANJ-OPPOSITE-MOTHER-DAIRY-DELHI-NEW-DELHI-DL-110092-IN-)

Prosecution Details

S.No.	Defaulting Entities	Court Name	Prosecution Section	Date Of Order	Status
No prosecutions found					

Charges/Borrowing Details

Charge ID	Creation Date	Modification Date	Closure Date	Assets Under Charge	Amount	Charge Holder
No charges found						

Establishments Details

Establishment Name	City	Pincode	Address
No establishments found			

*Industry classification is derived from National Industrial Classification. If the company has changed line of business without intimating the Registrar or is a diversified business, classification may be different. We make no warranties about accuracy of industrial classification.

Update Information

We are adding and updating information about hundreds of thousands of companies every day, and periodically add companies to the queue for being updated. You can ask for a company to be added to the front of the queue for updating, especially useful if the address, directors, or other critical information has changed. Just click on the 'Update Information' button below to start the process.

[Update Information](https://www.zaubacorp.com/company-update/MOTHER-DAIRY-LIMITED/U15201DL2002PLC116845) (https://www.zaubacorp.com/company-update/MOTHER-DAIRY-LIMITED/U15201DL2002PLC116845)

All Companies (<https://www.zaubacorp.com/companybrowse>) \ All Directors (<https://www.zaubacorp.com/directorsbrowse>) \ All Trademarks (<https://www.zaubacorp.com/trademarkbrowse>) \ Septaz (https://www.septaz.com?utm_campaign=referral&utm_medium=zaubacorp&utm_source=footer) \ Import Export Data (<https://www.zaubacorp.com/import-export-data>) \ About Us (https://zauba.com/company/?utm_campaign=referral&utm_medium=zaubacorp&utm_source=footer) \ FAQ (<https://www.zaubacorp.com/faq>) \ Privacy Policy (<https://www.zaubacorp.com/privacy-policy>) \ Terms of Use (<https://www.zaubacorp.com/terms>) \ Refunds & Cancellation (<https://www.zaubacorp.com/refunds-cancellation>) \ Contact US (<https://www.zaubacorp.com/contact-us>)
© 2013 Zauba Technologies & Data Services Private Limited. All rights reserved.



(<https://www.facebook.com/zaubatechnologies>)



(<https://twitter.com/wearezauba>)



(<https://www.linkedin.com/company/zauba>)



[Products](#)[Careers \(https://zauba.company/careers.html?utm_campaign=referral&utm_medium=zaubacorp&utm_source=careers\)](https://zauba.company/careers.html?utm_campaign=referral&utm_medium=zaubacorp&utm_source=careers)[Sign In \(https://www.zaubacorp.com/user/login?destination=company/MOTHER-DAIRY-FOODS-LIMITED/U15209DL2002PLC115530\)](https://www.zaubacorp.com/user/login?destination=company/MOTHER-DAIRY-FOODS-LIMITED/U15209DL2002PLC115530)[Sign Up \(https://www.zaubacorp.com/user/register?destination=company/MOTHER-DAIRY-FOODS-LIMITED/U15209DL2002PLC115530\)](https://www.zaubacorp.com/user/register?destination=company/MOTHER-DAIRY-FOODS-LIMITED/U15209DL2002PLC115530)[Company](#) [Director](#) [Trademark](#) [Address](#)

Enter company name or cin

[Browse Companies by Activity, Age and Location \(https://www.zaubacorp.com/company-list\)](https://www.zaubacorp.com/company-list)[Home \(https://www.zaubacorp.com\)](https://www.zaubacorp.com) - Mother Dairy Foods Limited

MOTHER DAIRY FOODS LIMITED

As on: April 17, 2019

[Track this company](#)[Basic Information \(https://www.zaubacorp.com/company/MOTHER-DAIRY-FOODS-LIMITED/U15209DL2002PLC115530\)](https://www.zaubacorp.com/company/MOTHER-DAIRY-FOODS-LIMITED/U15209DL2002PLC115530)[Documents \(https://www.zaubacorp.com/documents/MOTHER-DAIRY-FOODS-LIMITED/U15209DL2002PLC115530\)](https://www.zaubacorp.com/documents/MOTHER-DAIRY-FOODS-LIMITED/U15209DL2002PLC115530)[Trademarks \(https://www.zaubacorp.com/company-trademark/MOTHER-DAIRY-FOODS-LIMITED/U15209DL2002PLC115530\)](https://www.zaubacorp.com/company-trademark/MOTHER-DAIRY-FOODS-LIMITED/U15209DL2002PLC115530)[Directors \(https://www.zaubacorp.com/company-directors/MOTHER-DAIRY-FOODS-LIMITED/U15209DL2002PLC115530\)](https://www.zaubacorp.com/company-directors/MOTHER-DAIRY-FOODS-LIMITED/U15209DL2002PLC115530)[Map \(https://www.zaubacorp.com/company-map/MOTHER-DAIRY-FOODS-LIMITED/U15209DL2002PLC115530/India\)](https://www.zaubacorp.com/company-map/MOTHER-DAIRY-FOODS-LIMITED/U15209DL2002PLC115530/India)

Mother Dairy Foods Limited is a Public incorporated on 24 May 2002. It is classified as Non-govt company and is registered at Registrar of Companies, Delhi. Its authorized share capital is Rs. 200,000,000 and its paid up capital is Rs. 18,000,000. It is involved in Manufacture of dairy product [production of raw milk is classified in class 0121]

Mother Dairy Foods Limited's Annual General Meeting (AGM) was last held on N/A and as per records from Ministry of Corporate Affairs (MCA), its balance sheet was last filed on N/A.

Mother Dairy Foods Limited's Corporate Identification Number is (CIN) U15209DL2002PLC115530 and its registration number is 115530. Its Email address is and its registered address is PREMISES OF MOTHER DAIRYPATPARGANJ NEW DELHI DL 110092 IN , - , .

Current status of Mother Dairy Foods Limited is - Amalgamated.

Company Details

CIN	U15209DL2002PLC115530 (https://www.zaubacorp.com/company/MOTHER-DAIRY-FOODS-LIMITED/U15209DL2002PLC115530)
Company Name	MOTHER DAIRY FOODS LIMITED
Company Status	Amalgamated
RoC	RoC-Delhi
Registration Number	115530
Company Category	Company limited by Shares
Company Sub Category	Non-govt company
Class of Company	Public
Date of Incorporation	24 May 2002
Age of Company	16 years, 11 month, 4 days
Activity	Manufacture of dairy product [production of raw milk is classified in class 0121] Click here (https://www.zaubacorp.com/company-list/nic-152-company.html) to see other companies involved in same activity.
Number of Members	-

Previous Names

Login (<https://www.zaubacorp.com/user/login?destination=company/MOTHER-DAIRY-FOODS-LIMITED/U15209DL2002PLC115530>) to view previous names

Previous CINS

Login (<https://www.zaubacorp.com/user/login?destination=company/MOTHER-DAIRY-FOODS-LIMITED/U15209DL2002PLC115530>) to view previous cins

Legal Report

View all criminal and civil cases of MOTHER DAIRY FOODS LIMITED

[Purchase Legal Report \(https://www.zaubacorp.com/lawsuit-add-to-cart/U15209D\)](https://www.zaubacorp.com/lawsuit-add-to-cart/U15209D)

Financial Report

Balance Sheet

Paid-up Capital	🔒
Reserves & Surplus	🔒
Long Term Borrowings	🔒
Short Term Borrowings	🔒
Trade Payables	🔒
Current Investments	🔒
Inventories	🔒
Trade Receivables	🔒
Cash and Bank Balances	🔒

Profit & Loss

Total Revenue (Turnover)	🔒
Total Expenses	🔒
Employee Benefit Expenses	🔒
Finance Costs	🔒
Depriciation	🔒
Profit Before Tax	🔒
Profit After Tax	🔒

Unlock complete report with historical financials and view all 5 documents for ₹499 only

[Add to Cart \(https://www.zaut\)](https://www.zaut)

✔ Graphical report containing historical financial performance. Click Here (<https://www.zaubacorp.com/company-report/L85110KA1981PLC013115>) to view financial report of Infosys Ltd.

✔ Lifetime access to all documents

✔ Download all 5 documents in one click

✔ View Events Timeline - List of all company events since inception. Click Here (<https://www.zaubacorp.com/company-events/L85110KA1981PLC013115>) to view Events Timeline of Infosys Ltd.

Share Capital & Number of Employees

Authorised Capital ₹200,000,000

Paid up capital ₹18,000,000

Number of Employees Login to view
(<https://www.zaubacorp.com/user/login?destination=company/MOTHER-DAIRY-FOODS-LIMITED/U15209DL2002PLC115530>)

Listing and Annual Compliance Details

Listing status	Unlisted
Date of Last Annual General Meeting	N/A
Date of Latest Balance Sheet	N/A

Contact Details

Email ID: -

Website: Click here to add.

Address:

PREMISES OF MOTHER DAIRYPATPARGANJ NEW DELHI DL
110092 IN



Director Details

DIN	Director Name	Designation	Appointment Date
-----	---------------	-------------	------------------

Directors not found.

Past Director Details

DIN	Director Name	Appointment Date	Cessation Date
-----	---------------	------------------	----------------

Login (<https://www.zaubacorp.com/user/login?destination=company/MOTHER-DAIRY-FOODS-LIMITED/U15209DL2002PLC115530>) to view past directors.

Companies with Similar Address

CIN	Name	Address
-----	------	---------

AAF-6383	BALAJI BOOKS AND SERVICES LLP (https://www.zaubacorp.com/company/BALAJI-BOOKS-AND-SERVICES-LLP/AAF-6383)	E-5, MOTHER DAIRY FLATS,NEW DELHI NEW DELHI-110092 DELHI East Delhi DL 110092 IN
U74120DL2009PTC195216	ARDEN TELECOM PRIVATE LIMITED (https://www.zaubacorp.com/company/ARDEN-TELECOM-PRIVATE-LIMITED/U74120DL2009PTC195216)	D-19 GROUND FLOOR, NEAR MOTHER DAIRY PANDAV NAGAR , NEW DELHI -110092 NEW DELHI East Delhi DL 110092 IN
U51216DL2003PLC148227	MOTHER DAIRY KERALA LIMITED (https://www.zaubacorp.com/company/MOTHER-DAIRY-KERALA-LIMITED/U51216DL2003PLC148227)	MOTHER DAIRY PATPARGANJ DELHI New Delhi DL 110092 IN
U51222DL2003PLC151286	MOTHER DAIRY KERALA LIMITED (https://www.zaubacorp.com/company/MOTHER-DAIRY-KERALA-LIMITED/U51222DL2003PLC151286)	MOTHER DAIRY PATPARGANJ DELHI New Delhi DL 110092 IN
U15111DL2003PLC148224	MOTHER DAIRY UTTARANCHAL LIMITED (https://www.zaubacorp.com/company/MOTHER-DAIRY-UTTARANCHAL-LIMITED/U15111DL2003PLC148224)	MOTHER DAIRY PATPARGANJ DELHI New Delhi DL 110092 IN
U15111DL2003PLC148225	PARAG MILKFOODS (U.P) LIMITED (https://www.zaubacorp.com/company/PARAG-MILKFOODS-U-P-LIMITED/U15111DL2003PLC148225)	MOTHER DAIRY PATPARGANJ DELHI New Delhi DL 110092 IN
U15121DL2003PLC148228	MOTHER DAIRY (A.P) LIMITED (https://www.zaubacorp.com/company/MOTHER-DAIRY-A-P-LIMITED/U15121DL2003PLC148228)	MOTHER DAIRY PATPARGANJ DELHI New Delhi DL 110092 IN
U15419DL2002PLC115531	MOTHER DAIRY FOODS PROCESSING LIMITED (https://www.zaubacorp.com/company/MOTHER-DAIRY-FOODS-PROCESSING-LIMITED/U15419DL2002PLC115531)	IN THE PREMISES OF - MOTHER DAIRY PATPAR GANJ DELHI DL 110092 IN
U55101DL2016PTC291091	PRASADAM FOODS PRIVATE LIMITED (https://www.zaubacorp.com/company/PRASADAM-FOODS-PRIVATE-LIMITED/U55101DL2016PTC291091)	G-57,Out of Khasra No. 74,75 & 78 Situated in the Abadi of Vikash Marg, Laxminagar New Delhi East Delhi DL 110092 IN

[m/company-by-address/G-57-OUT-OF-KHASRA-NO-74-75-78-SITUATED-IN-THE-ABADI-OF-VIKASH-MARG-LAXMINAGAR-NEW-DELHI-EAST-DELHI-DL-110092-IN-](https://www.zaubacorp.com/company-by-address/G-57-OUT-OF-KHASRA-NO-74-75-78-SITUATED-IN-THE-ABADI-OF-VIKASH-MARG-LAXMINAGAR-NEW-DELHI-EAST-DELHI-DL-110092-IN-)

Prosecution Details

S.No.	Defaulting Entities	Court Name	Prosecution Section	Date Of Order	Status
No prosecutions found					

Charges/Borrowing Details

Charge ID	Creation Date	Modification Date	Closure Date	Assets Under Charge	Amount	Charge Holder
No charges found						

Establishments Details

Establishment Name	City	Pincode	Address
No establishments found			

*Industry classification is derived from National Industrial Classification. If the company has changed line of business without intimating the Registrar or is a diversified business, classification may be different. We make no warranties about accuracy of industrial classification.

Update Information

We are adding and updating information about hundreds of thousands of companies every day, and periodically add companies to the queue for being updated. You can ask for a company to be added to the front of the queue for updating, especially useful if the address, directors, or other critical information has changed. Just click on the 'Update Information' button below to start the process.

[Update Information](https://www.zaubacorp.com/company-update/MOTHER-DAIRY-FOODS-LIMITED/U15209DL2002PLC115530) (https://www.zaubacorp.com/company-update/MOTHER-DAIRY-FOODS-LIMITED/U15209DL2002PLC115530)

All Companies (<https://www.zaubacorp.com/companybrowse>) \ All Directors (<https://www.zaubacorp.com/directorsbrowse>) \ All Trademarks (<https://www.zaubacorp.com/trademarkbrowse>) \ Septaz (https://www.septaz.com?utm_campaign=referral&utm_medium=zaubacorp&utm_source=footer) \ Import Export Data (<https://www.zaubacorp.com/import-export-data>) \ About Us (https://zauba.com/company?utm_campaign=referral&utm_medium=zaubacorp&utm_source=footer) \ FAQ (<https://www.zaubacorp.com/faq>) \ Privacy Policy (<https://www.zaubacorp.com/privacy-policy>) \ Terms of Use (<https://www.zaubacorp.com/terms>) \ Refunds & Cancellation (<https://www.zaubacorp.com/refunds-cancellation>) \ Contact US (<https://www.zaubacorp.com/contact-us>)

© 2013 Zauba Technologies & Data Services Private Limited. All rights reserved.



(<https://www.facebook.com/zaubatechnologies>)



(<https://twitter.com/wearezauba>)



(<https://www.linkedin.com/company/zauba>)



[Products](#)[Careers \(https://zauba.company/careers.html?utm_campaign=referral&utm_medium=zaubacorp&utm_source=careers\)](https://zauba.company/careers.html?utm_campaign=referral&utm_medium=zaubacorp&utm_source=careers)[Sign In \(https://www.zaubacorp.com/user/login?destination=company/MOTHER-DAIRY-FOODS-PROCESSING-LIMITED/U15419DL2002PLC115531\)](https://www.zaubacorp.com/user/login?destination=company/MOTHER-DAIRY-FOODS-PROCESSING-LIMITED/U15419DL2002PLC115531)[Sign Up \(https://www.zaubacorp.com/user/register?destination=company/MOTHER-DAIRY-FOODS-PROCESSING-LIMITED/U15419DL2002PLC115531\)](https://www.zaubacorp.com/user/register?destination=company/MOTHER-DAIRY-FOODS-PROCESSING-LIMITED/U15419DL2002PLC115531)[Company](#) [Director](#) [Trademark](#) [Address](#)

Enter company name or cin

[Browse Companies by Activity, Age and Location \(https://www.zaubacorp.com/company-list\)](https://www.zaubacorp.com/company-list)[Home \(https://www.zaubacorp.com\)](https://www.zaubacorp.com) - Mother Dairy Foods Processing Limited

MOTHER DAIRY FOODS PROCESSING LIMITED

As on: April 17, 2019

[Track this company](#)[Basic Information \(https://www.zaubacorp.com/company/MOTHER-DAIRY-FOODS-PROCESSING-LIMITED/U15419DL2002PLC115531\)](https://www.zaubacorp.com/company/MOTHER-DAIRY-FOODS-PROCESSING-LIMITED/U15419DL2002PLC115531)[Documents \(https://www.zaubacorp.com/documents/MOTHER-DAIRY-FOODS-PROCESSING-LIMITED/U15419DL2002PLC115531\)](https://www.zaubacorp.com/documents/MOTHER-DAIRY-FOODS-PROCESSING-LIMITED/U15419DL2002PLC115531)[Trademarks \(https://www.zaubacorp.com/company-trademark/MOTHER-DAIRY-FOODS-PROCESSING-LIMITED/U15419DL2002PLC115531\)](https://www.zaubacorp.com/company-trademark/MOTHER-DAIRY-FOODS-PROCESSING-LIMITED/U15419DL2002PLC115531)[Directors \(https://www.zaubacorp.com/company-directors/MOTHER-DAIRY-FOODS-PROCESSING-LIMITED/U15419DL2002PLC115531\)](https://www.zaubacorp.com/company-directors/MOTHER-DAIRY-FOODS-PROCESSING-LIMITED/U15419DL2002PLC115531)[Map \(https://www.zaubacorp.com/company-map/MOTHER-DAIRY-FOODS-PROCESSING-LIMITED/U15419DL2002PLC115531/India\)](https://www.zaubacorp.com/company-map/MOTHER-DAIRY-FOODS-PROCESSING-LIMITED/U15419DL2002PLC115531/India)

Mother Dairy Foods Processing Limited is a Public incorporated on 24 May 2002. It is classified as Non-govt company and is registered at Registrar of Companies, Delhi. Its authorized share capital is Rs. 1,500,000,000 and its paid up capital is Rs. 1,500,000,000. It is involved in Manufacture of other food

products

Mother Dairy Foods Processing Limited's Annual General Meeting (AGM) was last held on 15 September 2006 and as per records from Ministry of Corporate Affairs (MCA), its balance sheet was last filed on 31 March 2006.

Directors of Mother Dairy Foods Processing Limited are Sunil Kumar Bansal, Deepak Tikku, Nisar Ahmed Shaikh, Joseph Paul Thachil, Biswajeet Das Chatterjee and Sampath Parthasarathy.

Mother Dairy Foods Processing Limited's Corporate Identification Number is (CIN) U15419DL2002PLC115531 and its registration number is 115531. Its Email address is t.joseph@motherdairy.com and its registered address is IN THE PREMISES OF - MOTHER DAIRY PATPAR GANJ DELHI DL 110092 IN , - , .

Current status of Mother Dairy Foods Processing Limited is - Amalgamated.

Company Details

CIN	U15419DL2002PLC115531 (https://www.zaubacorp.com/company/MOTHER-DAIRY-FOODS-PROCESSING-LIMITED/U15419DL2002PLC115531)
Company Name	MOTHER DAIRY FOODS PROCESSING LIMITED
Company Status	Amalgamated
RoC	RoC-Delhi
Registration Number	115531
Company Category	Company limited by Shares
Company Sub Category	Non-govt company
Class of Company	Public
Date of Incorporation	24 May 2002
Age of Company	16 years, 11 month, 4 days
Activity	Manufacture of other food products Click here (https://www.zaubacorp.com/company-list/nic-154-company.html) to see other companies involved in same activity.
Number of Members	-

Previous Names

Login (<https://www.zaubacorp.com/user/login?destination=company/MOTHER-DAIRY-FOODS-PROCESSING-LIMITED/U15419DL2002PLC115531>) to view previous names

Previous CINS

Legal Report

View all criminal and civil cases of MOTHER DAIRY FOODS PROCESSING LIMITED

[Purchase Legal Report \(https://www.zaubacorp.com/lawsuit-add-to-cart/U15419D\)](https://www.zaubacorp.com/lawsuit-add-to-cart/U15419D)

Financial Report

Balance Sheet

Paid-up Capital	
Reserves & Surplus	
Long Term Borrowings	
Short Term Borrowings	
Trade Payables	
Current Investments	
Inventories	
Trade Receivables	
Cash and Bank Balances	

Profit & Loss

Total Revenue (Turnover)	
Total Expenses	
Employee Benefit Expenses	
Finance Costs	
Depriciation	
Profit Before Tax	
Profit After Tax	

Unlock complete report with historical financials and view all 197 documents for ₹499 only

[Add to Cart \(https://www.zaut\)](https://www.zaut)

Graphical report containing historical financial performance. Click Here (<https://www.zaubacorp.com/company-report/L85110KA1981PLC013115>) to view financial report of

Login (<https://www.zaubacorp.com/user/login?destination=company/MOTHER-DAIRY-FOODS-PROCESSING-LIMITED/U15419DL2002PLC115531>) to view previous cins

Share Capital & Number of Employees

Authorised Capital ₹1,500,000,000

Paid up capital ₹1,500,000,000

Number of Employees Login to view (<https://www.zaubacorp.com/user/login?destination=company/MOTHER-DAIRY-FOODS-PROCESSING-LIMITED/U15419DL2002PLC115531>)

Infosys Ltd.

- ✔ Lifetime access to all documents
- ✔ Download all 197 documents in one click
- ✔ View Events Timeline - List of all company events since inception. Click Here (<https://www.zaubacorp.com/company-events/L85110KA1981PLC013115>) to view Events Timeline of Infosys Ltd.

Listing and Annual Compliance Details

Listing status	Unlisted
Date of Last Annual General Meeting	15 September 2006
Date of Latest Balance Sheet	31 March 2006

Contact Details

Email ID: t.joseph@motherdairy.com

Website: Click here to add.

Address:

IN THE PREMISES OF - MOTHER DAIRY PATPAR GANJ DELHI DL 110092 IN



Director Details

DIN	Director Name	Designation	Appointment Date	
01460570	SUNIL KUMAR BANSAL (https://www.zaubacorp.com/director/SUNIL-KUMAR-BANSAL/01460570)	Wholetime Director	16 March 2007	View other directorships
00064125	DEEPAK TIKKU (https://www.zaubacorp.com/director/DEEPAK-TIKKU/00064125)	Director	24 May 2002	View other directorships
00085329	NISAR AHMED SHAIKH (https://www.zaubacorp.com/director/NISAR-AHMED-SHAIKH/00085329)	Managing Director	16 December 2005	View other directorships

00135228	JOSEPH PAUL THACHIL (https://www.zaubacorp.com/director/JOSEPH-PAUL-THACHIL/00135228)	Director	27 December 2003	View other directorships
00199378	BISWAJEET DAS CHATTERJEE (https://www.zaubacorp.com/director/BISWAJEET-DAS-CHATTERJEE/00199378)	Director	17 June 2005	View other directorships
00337667	SAMPATH PARTHASARATHY (https://www.zaubacorp.com/director/SAMPATH-PARTHASARATHY/00337667)	Director	01 August 2002	View other directorships

Past Director Details

DIN	Director Name	Appointment Date	Cessation Date
-----	---------------	------------------	----------------

Login (<https://www.zaubacorp.com/user/login?destination=company/MOTHER-DAIRY-FOODS-PROCESSING-LIMITED/U15419DL2002PLC115531>) to view past directors.

Companies with Similar Address

CIN	Name	Address
AAK-8896	OCTAGON TECHNOLOGIES LLP (https://www.zaubacorp.com/company/OCTAGON-TECHNOLOGIES-LLP/AAK-8896)	E-223A,FIRST FLOOR,GALI NO-4, WEST VINOD NAGAR PATPAR GANJ, BEFORE SANGAM DAIRY,NEW DEL HI -110092 NEW DELHI East Delhi DL 110092 IN
U51507DL2002PTC116320	S.D. SCIENTIFIC COMPANY PRIVATE LIMITED (https://www.zaubacorp.com/company/S-D-SCIENTIFIC-COMPANY-PRIVATE-LIMITED/U51507DL2002PTC116320)	D-130 SOUTH GANESH NAGAROPP MOTHER DAIRY QTRS PATPAR GANJ ROAD NEW DELHI DL 110092 IN
U21012DL2005PTC140663	MUSKAN PAPERS PRIVATE LIMITED (https://www.zaubacorp.com/company/MUSKAN-PAPERS-PRIVATE-LIMITED/U21012DL2005PTC140663)	A-28, PANDAV NAGAR, OPP. MOTHER DAIRY, NEAR GURUDWARA, PATPAR GANJ, DELHI DL 110092 IN
U51909DL2009PTC188926	SMG TRADELINK PRIVATE LIMITED (https://www.zaubacorp.com/company/SMG-TRADELINK-PRIVATE-LIMITED/U51909DL2009PTC188926)	A-28, PANDAV NAGAR, OPP. MOTHER DAIRY, NEAR GURUDWARA, PATPAR GANJ, DELHI DL 110092 IN
U51109DL2009PTC188954	S D R TRADING PRIVATE LIMITED (https://www.zaubacorp.com/company/S-D-R-TRADING-PRIVATE-LIMITED/U51109DL2009PTC188954)	A-28, PANDAV NAGAR, OPP. MOTHER DAIRY, NEAR GURUDWARA, PATPAR GANJ, DELHI DL 110092 IN
U74899DL1984PTC019032	MONARCH COLD STORAGES PRIVATE LIMITED (https://www.zaubacorp.com/company/MONARCH-COLD-STORAGES-PRIVATE-LIMITED/U74899DL1984PTC019032)	A-28, PANDAV NAGAR, OPP. MOTHER DAIRY, NEAR GURUDWARA, PATPAR GANJ, DELHI DL 110092 IN
U72900DL2018PTC328291	KENSTORM SOFTWARE PRIVATE LIMITED (https://www.zaubacorp.com/company/KENSTORM-SOFTWARE-PRIVATE-LIMITED/U72900DL2018PTC328291)	85, Ashirwad Apartment plot no 74 IP Extension, Patpar Ganj Delhi-110092 patpar ganj East Delhi DL 110092 IN
U55101DL2016PTC291091	PRASADAM FOODS PRIVATE LIMITED (https://www.zaubacorp.com/company/PRASADAM-FOODS-PRIVATE-LIMITED/U55101DL2016PTC291091)	G-57,Out of Khasra No. 74,75 & 78 Situated in the Abadi of Vikash Marg, Laxminagar New Delhi East Delhi DL 110092 IN
AAF-6383	BALAJI BOOKS AND SERVICES LLP (https://www.zaubacorp.com/company/BALAJI-BOOKS-AND-SERVICES-LLP/AAF-6383)	E-5, MOTHER DAIRY FLATS,NEW DELHI NEW DELHI-110092 DELHI East Delhi DL 110092 IN

similar address (<https://www.zaubacorp.com/company-by-address/E-5-MOTHER-DAIRY-FLATS-NEW-DELHI-NEW-DELHI-110092-DELHI-EAST-DELHI-DL-110092-IN->)

Prosecution Details

S.No.	Defaulting Entities	Court Name	Prosecution Section	Date Of Order	Status
No prosecutions found					

Charges/Borrowing Details

Charge ID	Creation Date	Modification Date	Closure Date	Assets Under Charge	Amount	Charge Holder
No charges found						

Establishments Details

Establishment Name	City	Pincode	Address
MOTHER DAIRY FOODS PROCESING LTD.	MALADKANDIVALI	400065	NATIIONAL DAIRY DEVELOPMENT BOARDNR MAHANANDA DAIRY,GOREGAON EMUMBAI598MH

*Industry classification is derived from National Industrial Classification. If the company has changed line of business without intimating the Registrar or is a diversified business, classification may be different. We make no warranties about accuracy of industrial classification.

Update Information

We are adding and updating information about hundreds of thousands of companies every day, and periodically add companies to the queue for being updated. You can ask for a company to be added to the front of the queue for updating, especially useful if the address, directors, or other critical information has changed. Just click on the 'Update Information' button below to start the process.

[Update Information](https://www.zaubacorp.com/company-update/MOTHER-DAIRY-FOODS-PROCESSING-LIMITED/U15419DL2002PLC115531) (<https://www.zaubacorp.com/company-update/MOTHER-DAIRY-FOODS-PROCESSING-LIMITED/U15419DL2002PLC115531>)

All Companies (<https://www.zaubacorp.com/companybrowse>) \ All Directors (<https://www.zaubacorp.com/directorsbrowse>) \ All Trademarks (<https://www.zaubacorp.com/trademarkbrowse>) \ Septaz (https://www.septaz.com?utm_campaign=referral&utm_medium=zaubacorp&utm_source=footer) \ Import Export Data (<https://www.zaubacorp.com/import-export>) \ About Us (<https://www.zaubacorp.com/about-us>) \ FAQ (<https://www.zaubacorp.com/faq>) \ Privacy Policy (<https://www.zaubacorp.com/privacy-policy>) \ Terms of Use (<https://www.zaubacorp.com/terms>) \ Refunds & Cancellation (<https://www.zaubacorp.com/refunds-cancellation>) \ Contact US (<https://www.zaubacorp.com/contact-us>)
 © 2013 Zaubacorp Technologies & Data Services Private Limited. All rights reserved.



(<https://www.facebook.com/zaubatechnologies>)



(<https://twitter.com/wearezauba>)



(<https://www.linkedin.com/company/zauba>)



[Products](#)[Careers](https://zauba.company/careers.html?utm_campaign=referral&utm_medium=zaubacorp&utm_source=careers)[Sign In](https://www.zaubacorp.com/user/login?destination=company/MOTHER-DAIRY-INDIA-LIMITED/U74899DL2003PLC119645)[Sign Up](https://www.zaubacorp.com/user/register?destination=company/MOTHER-DAIRY-INDIA-LIMITED/U74899DL2003PLC119645)[Company](#) [Director](#) [Trademark](#) [Address](#)

Enter company name or cin

[Browse Companies by Activity, Age and Location](https://www.zaubacorp.com/company-list)[Home](https://www.zaubacorp.com) - Mother Dairy India Limited

MOTHER DAIRY INDIA LIMITED

As on: April 23, 2019

[Track this company](#)[Basic Information](https://www.zaubacorp.com/company/MOTHER-DAIRY-INDIA-LIMITED/U74899DL2003PLC119645)[Documents](https://www.zaubacorp.com/documents/MOTHER-DAIRY-INDIA-LIMITED/U74899DL2003PLC119645)[Trademarks](https://www.zaubacorp.com/company-trademark/MOTHER-DAIRY-INDIA-LIMITED/U74899DL2003PLC119645)[Directors](https://www.zaubacorp.com/company-directors/MOTHER-DAIRY-INDIA-LIMITED/U74899DL2003PLC119645)[Map](https://www.zaubacorp.com/company-map/MOTHER-DAIRY-INDIA-LIMITED/U74899DL2003PLC119645/India)

Mother Dairy India Limited is a Public incorporated on 01 April 2003. It is classified as Non-govt company and is registered at Registrar of Companies, Delhi. Its authorized share capital is Rs. 100,000,000 and its paid up capital is Rs. 1,000,000. It is involved in OTHER BUSINESS ACTIVITIES

Mother Dairy India Limited's Annual General Meeting (AGM) was last held on 15 September 2006 and as per records from Ministry of Corporate Affairs (MCA), its balance sheet was last filed on 31 March 2006.

Directors of Mother Dairy India Limited are Deepak Tikku, Biswajeet Das Chatterjee and Sampath Parthasarathy.

Mother Dairy India Limited's Corporate Identification Number is (CIN) U74899DL2003PLC119645 and its registration number is 119645. Its Email address is kishore.mehta@motherdairy.com and its registered address is MOTHER DAIRY PATPARGANJ DELHI DL 110092 IN , - , .

Current status of Mother Dairy India Limited is - Amalgamated.

Company Details

CIN	U74899DL2003PLC119645 (https://www.zaubacorp.com/company/MOTHER-DAIRY-INDIA-LIMITED/U74899DL2003PLC119645)
Company Name	MOTHER DAIRY INDIA LIMITED
Company Status	Amalgamated
RoC	RoC-Delhi
Registration Number	119645
Company Category	Company limited by Shares
Company Sub Category	Non-govt company
Class of Company	Public
Date of Incorporation	01 April 2003
Age of Company	16 years, 0 month, 27 days
Activity	OTHER BUSINESS ACTIVITIES Click here (https://www.zaubacorp.com/company-list/nic-74-company.html) to see other companies involved in same activity.
Number of Members	-

Previous Names

Login (<https://www.zaubacorp.com/user/login?destination=company/MOTHER-DAIRY-INDIA-LIMITED/U74899DL2003PLC119645>) to view previous names

Previous CINS

Login (<https://www.zaubacorp.com/user/login?destination=company/MOTHER-DAIRY-INDIA-LIMITED/U74899DL2003PLC119645>) to view previous cins

Share Capital & Number of Employees

₹100,000,000

Legal Report

View all criminal and civil cases of MOTHER DAIRY INDIA LIMITED

[Purchase Legal Report \(https://www.zaubacorp.com/lawsuit-add-to-cart/U74899D\)](https://www.zaubacorp.com/lawsuit-add-to-cart/U74899D)

Financial Report

Balance Sheet

Paid-up Capital	
Reserves & Surplus	
Long Term Borrowings	
Short Term Borrowings	
Trade Payables	
Current Investments	
Inventories	
Trade Receivables	
Cash and Bank Balances	

Profit & Loss

Total Revenue (Turnover)	
Total Expenses	
Employee Benefit Expenses	
Finance Costs	
Depriciation	
Profit Before Tax	
Profit After Tax	

Unlock complete report with historical financials and view all 45 documents for ₹499 only

[Add to Cart \(https://www.zaubacorp.com\)](https://www.zaubacorp.com)

Graphical report containing historical financial performance. Click Here (<https://www.zaubacorp.com/company-report/L85110KA1981PLC013115>) to view financial report of Infosys Ltd.

Lifetime access to all documents

Download all 45 documents in one click

View Events Timeline - List of all company events since inception. Click Here (<https://www.zaubacorp.com/company-events/L85110KA1981PLC013115>) to view Events Timeline of Infosys Ltd.

Authorised Capital

Paid up capital ₹1,000,000

Number of Employees [Login to view \(https://www.zaubacorp.com/user/login?destination=company/MOTHER-DAIRY-INDIA-LIMITED/U74899DL2003PLC119645\)](https://www.zaubacorp.com/user/login?destination=company/MOTHER-DAIRY-INDIA-LIMITED/U74899DL2003PLC119645)

Listing and Annual Compliance Details

Listing status	Unlisted
Date of Last Annual General Meeting	15 September 2006
Date of Latest Balance Sheet	31 March 2006

Contact Details

Email ID: kishore.mehta@motherdairy.com

Website: [Click here to add.](#)

Address:

MOTHER DAIRY PATPARGANJ DELHI DL 110092 IN



Director Details

DIN	Director Name	Designation	Appointment Date	
00064125	DEEPAK TIKKU (https://www.zaubacorp.com/director/DEEPAK-TIKKU/00064125)	Director	01 April 2003	View other directorships
00199378	BISWAJEET DAS CHATTERJEE (https://www.zaubacorp.com/director/BISWAJEET-DAS-CHATTERJEE/00199378)	Director	24 March 2005	View other directorships
00337667	SAMPATH PARTHASARATHY (https://www.zaubacorp.com/director/SAMPATH-PARTHASARATHY/00337667)	Director	25 April 2003	View other directorships

Past Director Details

DIN	Director Name	Appointment Date	Cessation Date
<p>Login (https://www.zaubacorp.com/user/login?destination=company/MOTHER-DAIRY-INDIA-LIMITED/U74899DL2003PLC119645) to view past directors.</p>			

Companies with Similar Address

CIN	Name	Address
U51222DL2003PLC151286	MOTHER DAIRY KERALA LIMITED (https://www.zaubacorp.com/company/MOTHER-DAIRY-KERALA-LIMITED/U51222DL2003PLC151286)	MOTHER DAIRY PATPARGANJ DELHI New Delhi DL 110092 IN
U15111DL2003PLC148224	MOTHER DAIRY UTTARANCHAL LIMITED (https://www.zaubacorp.com/company/MOTHER-DAIRY-UTTARANCHAL-LIMITED/U15111DL2003PLC148224)	MOTHER DAIRY PATPARGANJ DELHI New Delhi DL 110092 IN
U15111DL2003PLC148225	PARAG MILKFOODS (U.P.) LIMITED (https://www.zaubacorp.com/company/PARAG-MILKFOODS-U-P-LIMITED/U15111DL2003PLC148225)	MOTHER DAIRY PATPARGANJ DELHI New Delhi DL 110092 IN
U15121DL2003PLC148228	MOTHER DAIRY (A.P.) LIMITED (https://www.zaubacorp.com/company/MOTHER-DAIRY-A-P-LIMITED/U15121DL2003PLC148228)	MOTHER DAIRY PATPARGANJ DELHI New Delhi DL 110092 IN
U15419DL2002PLC115531	MOTHER DAIRY FOODS PROCESSING LIMITED (https://www.zaubacorp.com/company/MOTHER-DAIRY-FOODS-PROCESSING-LIMITED/U15419DL2002PLC115531)	IN THE PREMISES OF - MOTHER DAIRY PATPAR GANJ DELHI DL 110092 IN
U51909DL2006PLC234695	SAFAL NATIONAL EXCHANGE OF INDIA LIMITED (https://www.zaubacorp.com/company/SAFAL-NATIONAL-EXCHANGE-OF-INDIA-LIMITED/U51909DL2006PLC234695)	"MOTHER DAIRY" PATPARGANJ DELHI East Delhi DL 110092 IN
U80900DL2013PTC257084	AZURE GLOBAL TRAINING SERVICES PRIVATE LIMITED (https://www.zaubacorp.com/company/AZURE-GLOBAL-TRAINING-SERVICES-PRIVATE-LIMITED/U80900DL2013PTC257084)	110, Dhruva CGHS Patparganj, Mother Dairy Plant New Delhi East Delhi DL 110092 IN
U74899DL1995PTC074069	VAISHVI SURYANSH PRIVATE LIMITED (https://www.zaubacorp.com/company/VAISHVI-SURYANSH-PRIVATE-LIMITED/U74899DL1995PTC074069)	110,DHRUWA APPARTMENT,NEAR MOTHER DAIRY PATPARGANJ DELHI East Delhi DL 110092 IN
U74140DL2011PTC221523	ONS TOOLS AND ACCESSORIES PRIVATE LIMITED (https://www.zaubacorp.com/company/ONS-TOOLS-AND-ACCESSORIES-PRIVATE-LIMITED/U74140DL2011PTC221523)	HNO- C-89 PANDAV NAGAR PATPARGANJ OPPOSITE MOTHER DAIRY DELHI New Delhi DL 110092 IN

Address (<https://www.zaubacorp.com/company-by-address/HNO-C-89-PANDAV-NAGAR-PATPARGANJ-OPPOSITE-MOTHER-DAIRY-DELHI-NEW-DELHI-DL-110092-IN->)

Prosecution Details

S.No.	Defaulting Entities	Court Name	Prosecution Section	Date Of Order	Status
No prosecutions found					

Charges/Borrowing Details

Charge ID	Creation Date	Modification Date	Closure Date	Assets Under Charge	Amount	Charge Holder
No charges found						

Establishments Details

Establishment Name	City	Pincode	Address
--------------------	------	---------	---------

MOTHER DAIRY INDIA LTD	LAXMINAGAR	110092	PATPAR GANJPATPARGANJDELHI185DL
------------------------	------------	--------	------------------------------------

*Industry classification is derived from National Industrial Classification. If the company has changed line of business without intimating the Registrar or is a diversified business, classification may be different. We make no warranties about accuracy of industrial classification.

Update Information

We are adding and updating information about hundreds of thousands of companies every day, and periodically add companies to the queue for being updated. You can ask for a company to be added to the front of the queue for updating, especially useful if the address, directors, or other critical information has changed. Just click on the 'Update Information' button below to start the process.

[Update Information](https://www.zaubacorp.com/company-update/MOTHER-DAIRY-INDIA-LIMITED/U74899DL2003PLC119645) (https://www.zaubacorp.com/company-update/MOTHER-DAIRY-INDIA-LIMITED/U74899DL2003PLC119645)

All Companies (<https://www.zaubacorp.com/companybrowse>) \ All Directors (<https://www.zaubacorp.com/directorsbrowse>) \ All Trademarks (<https://www.zaubacorp.com/trademarkbrowse>) \ Septaz (https://www.septaz.com?utm_campaign=referral&utm_medium=zaubacorp&utm_source=footer) \ Import Export Data (https://www.zaubacorp.com?utm_campaign=referral&utm_medium=zaubacorp&utm_source=footer) \ About Us (https://zauba.com/company/?utm_campaign=referral&utm_medium=zaubacorp&utm_source=footer) \ FAQ (<https://www.zaubacorp.com/faq>) \ Privacy Policy (<https://www.zaubacorp.com/privacy-policy>) \ Terms of Use (<https://www.zaubacorp.com/terms>) \ Refunds & Cancellation (<https://www.zaubacorp.com/refunds-cancellation>) \ Contact US (<https://www.zaubacorp.com/contact-us>)
© 2013 Zauba Technologies & Data Services Private Limited. All rights reserved.



(<https://www.facebook.com/zaubatechnologies>)



(<https://twitter.com/wearezauba>)



(<https://www.linkedin.com/company/zauba>)



[Products](#)[Careers \(https://zauba.company/careers.html?utm_campaign=referral&utm_medium=zaubacorp&utm_source=careers\)](https://zauba.company/careers.html?utm_campaign=referral&utm_medium=zaubacorp&utm_source=careers)[Sign In \(https://www.zaubacorp.com/user/login?destination=company/MOTHER-DAIRY-KERALA-LIMITED/U51222DL2003PLC151286\)](https://www.zaubacorp.com/user/login?destination=company/MOTHER-DAIRY-KERALA-LIMITED/U51222DL2003PLC151286)[Sign Up \(https://www.zaubacorp.com/user/register?destination=company/MOTHER-DAIRY-KERALA-LIMITED/U51222DL2003PLC151286\)](https://www.zaubacorp.com/user/register?destination=company/MOTHER-DAIRY-KERALA-LIMITED/U51222DL2003PLC151286)

Company Director Trademark Address

Enter company name or cin

[Browse Companies by Activity, Age and Location \(https://www.zaubacorp.com/company-list\)](https://www.zaubacorp.com/company-list)

[Home \(https://www.zaubacorp.com\)](https://www.zaubacorp.com) - Mother Dairy Kerala Limited

MOTHER DAIRY KERALA LIMITED

As on: April 22, 2019

[Track this company](#)

[Basic Information \(https://www.zaubacorp.com/company/MOTHER-DAIRY-KERALA-LIMITED/U51222DL2003PLC151286\)](https://www.zaubacorp.com/company/MOTHER-DAIRY-KERALA-LIMITED/U51222DL2003PLC151286)

[Documents \(https://www.zaubacorp.com/documents/MOTHER-DAIRY-KERALA-LIMITED/U51222DL2003PLC151286\)](https://www.zaubacorp.com/documents/MOTHER-DAIRY-KERALA-LIMITED/U51222DL2003PLC151286)

[Trademarks \(https://www.zaubacorp.com/company-trademark/MOTHER-DAIRY-KERALA-LIMITED/U51222DL2003PLC151286\)](https://www.zaubacorp.com/company-trademark/MOTHER-DAIRY-KERALA-LIMITED/U51222DL2003PLC151286)

[Directors \(https://www.zaubacorp.com/company-directors/MOTHER-DAIRY-KERALA-LIMITED/U51222DL2003PLC151286\)](https://www.zaubacorp.com/company-directors/MOTHER-DAIRY-KERALA-LIMITED/U51222DL2003PLC151286)

[Map \(https://www.zaubacorp.com/company-map/MOTHER-DAIRY-KERALA-LIMITED/U51222DL2003PLC151286/India\)](https://www.zaubacorp.com/company-map/MOTHER-DAIRY-KERALA-LIMITED/U51222DL2003PLC151286/India)

Mother Dairy Kerala Limited is a Public incorporated on 17 March 2003. It is classified as Non-govt company and is registered at Registrar of Companies, Delhi. Its authorized share capital is Rs. 17,500,000 and its paid up capital is Rs. 10,000,000. It is involved in Wholesale of agricultural raw material, live animals, food beverages and tobacco

Mother Dairy Kerala Limited's Annual General Meeting (AGM) was last held on 29 July 2005 and as per records from Ministry of Corporate Affairs (MCA), its balance sheet was last filed on 31 March 2005.

Mother Dairy Kerala Limited's Corporate Identification Number is (CIN) U51222DL2003PLC151286 and its registration number is 151286. Its Email address is kishor.mehta@mothredairy.com and its registered address is MOTHER DAIRY PATPARGANJ DELHI New Delhi DL 110092 IN , - , .

Current status of Mother Dairy Kerala Limited is - Strike Off.

Company Details

CIN	U51222DL2003PLC151286 (https://www.zaubacorp.com/company/MOTHER-DAIRY-KERALA-LIMITED/U51222DL2003PLC151286)
Company Name	MOTHER DAIRY KERALA LIMITED
Company Status	Strike Off
RoC	RoC-Delhi
Registration Number	151286
Company Category	Company limited by Shares
Company Sub Category	Non-govt company
Class of Company	Public
Date of Incorporation	17 March 2003
Age of Company	16 years, 1 month, 11 days
Activity	Wholesale of agricultural raw material, live animals, food beverages and tobacco Click here (https://www.zaubacorp.com/company-list/nic-512-company.html) to see other companies involved in same activity.
Number of Members	7

Previous Names

Login (<https://www.zaubacorp.com/user/login?destination=company/MOTHER-DAIRY-KERALA-LIMITED/U51222DL2003PLC151286>) to view previous names

Previous CINS

Login (<https://www.zaubacorp.com/user/login?destination=company/MOTHER-DAIRY-KERALA-LIMITED/U51222DL2003PLC151286>) to view previous cins

Legal Report

View all criminal and civil cases of MOTHER DAIRY KERALA LIMITED

[Purchase Legal Report \(https://www.zaubacorp.com/lawsuit-add-to-cart/U51222D\)](https://www.zaubacorp.com/lawsuit-add-to-cart/U51222D)

Financial Report

Balance Sheet

Paid-up Capital	
Reserves & Surplus	
Long Term Borrowings	
Short Term Borrowings	
Trade Payables	
Current Investments	
Inventories	
Trade Receivables	
Cash and Bank Balances	

Profit & Loss

Total Revenue (Turnover)	
Total Expenses	
Employee Benefit Expenses	
Finance Costs	
Depriciation	
Profit Before Tax	
Profit After Tax	

Unlock complete report with historical financials and view all 28 documents for ₹499 only

[Add to Cart \(https://www.zaut\)](https://www.zaut)

Graphical report containing historical financial performance. Click Here (<https://www.zaubacorp.com/company-report/L85110KA1981PLC013115>) to view financial report of Infosys Ltd.

Lifetime access to all documents

Download all 28 documents in one click

View Events Timeline - List of all company events since inception. Click Here (<https://www.zaubacorp.com/company-events/L85110KA1981PLC013115>) to view Events Timeline of Infosys Ltd.

Share Capital & Number of Employees

Authorised Capital ₹17,500,000

Paid up capital ₹10,000,000

Number of Employees Login to view
(<https://www.zaubacorp.com/user/login?destination=company/MOTHER-DAIRY-KERALA-LIMITED/U51222DL2003PLC151286>)

Listing and Annual Compliance Details

Listing status	Unlisted
Date of Last Annual General Meeting	29 July 2005
Date of Latest Balance Sheet	31 March 2005

Contact Details

Email ID: kishor.mehta@mothredairy.com

Website: <http://www.mothredairy.com> (Incorrect website?)

Address:

MOTHER DAIRY PATPARGANJ DELHI New Delhi DL 110092 IN



Director Details

DIN	Director Name	Designation	Appointment Date
-----	---------------	-------------	------------------

Directors not found.

Past Director Details

DIN	Director Name	Appointment Date	Cessation Date
-----	---------------	------------------	----------------

Login (<https://www.zaubacorp.com/user/login?destination=company/MOTHER-DAIRY-KERALA-LIMITED/U51222DL2003PLC151286>) to view past directors.

Companies with Similar Address

CIN	Name	Address
-----	------	---------

U74120DL2009PTC195216	ARDEN TELECOM PRIVATE LIMITED (https://www.zaubacorp.com/company/ARDEN-TELECOM-PRIVATE-LIMITED/U74120DL2009PTC195216)	D-19 GROUND FLOOR, NEAR MOTHER DAIRY PANDAV NAGAR , NEW DELHI -110092 NEW DELHI East Delhi DL 110092 IN
U51216DL2003PLC148227	MOTHER DAIRY KERALA LIMITED (https://www.zaubacorp.com/company/MOTHER-DAIRY-KERALA-LIMITED/U51216DL2003PLC148227)	MOTHER DAIRY PATPARGANJ DELHI New Delhi DL 110092 IN
U51222DL2003PLC151286	MOTHER DAIRY KERALA LIMITED (https://www.zaubacorp.com/company/MOTHER-DAIRY-KERALA-LIMITED/U51222DL2003PLC151286)	MOTHER DAIRY PATPARGANJ DELHI New Delhi DL 110092 IN
U15111DL2003PLC148224	MOTHER DAIRY UTTARANCHAL LIMITED (https://www.zaubacorp.com/company/MOTHER-DAIRY-UTTARANCHAL-LIMITED/U15111DL2003PLC148224)	MOTHER DAIRY PATPARGANJ DELHI New Delhi DL 110092 IN
U15111DL2003PLC148225	PARAG MILKFOODS (U.P.) LIMITED (https://www.zaubacorp.com/company/PARAG-MILKFOODS-U-P-LIMITED/U15111DL2003PLC148225)	MOTHER DAIRY PATPARGANJ DELHI New Delhi DL 110092 IN
U15121DL2003PLC148228	MOTHER DAIRY (A.P.) LIMITED (https://www.zaubacorp.com/company/MOTHER-DAIRY-A-P-LIMITED/U15121DL2003PLC148228)	MOTHER DAIRY PATPARGANJ DELHI New Delhi DL 110092 IN
U80900DL2013PTC257084	AZURE GLOBAL TRAINING SERVICES PRIVATE LIMITED (https://www.zaubacorp.com/company/AZURE-GLOBAL-TRAINING-SERVICES-PRIVATE-LIMITED/U80900DL2013PTC257084)	110, Dhruva CGHS Patparganj, Mother Dairy Plant New Delhi East Delhi DL 110092 IN
U74140DL2011PTC221523	ONS TOOLS AND ACCESSORIES PRIVATE LIMITED (https://www.zaubacorp.com/company/ONS-TOOLS-AND-ACCESSORIES-PRIVATE-LIMITED/U74140DL2011PTC221523)	HNO- C-89 PANDAV NAGAR PATPARGANJ OPPOSITE MOTHER DAIRY DELHI New Delhi DL 110092 IN
U16009DL2017PTC319655	TRIMURTI FRAGRANCES & FLAVOURS PRIVATE LIMITED (https://www.zaubacorp.com/company/TRIMURTI-FRAGRANCES-FLAVOURS-PRIVATE-LIMITED/U16009DL2017PTC319655)	Plot No.104, FIE, Patparganj, New Delhi -110092 (Delhi) India New Delhi East Delhi DL 110092 IN

[ress \(https://www.zaubacorp.com/company-by-address/PLOT-NO-104-FIE-PATPARGANJ-NEW-DELHI-110092-DELHI-INDIA-NEW-DELHI-EAST-DELHI-DL-110092-IN-\)](https://www.zaubacorp.com/company-by-address/PLOT-NO-104-FIE-PATPARGANJ-NEW-DELHI-110092-DELHI-INDIA-NEW-DELHI-EAST-DELHI-DL-110092-IN-)

Prosecution Details

S.No.	Defaulting Entities	Court Name	Prosecution Section	Date Of Order	Status
No prosecutions found					

Charges/Borrowing Details

Charge ID	Creation Date	Modification Date	Closure Date	Assets Under Charge	Amount	Charge Holder
No charges found						

Establishments Details

Establishment Name	City	Pincode	Address
No establishments found			

*Industry classification is derived from National Industrial Classification. If the company has changed line of business without intimating the Registrar or is a diversified business, classification may be different. We make no warranties about accuracy of industrial classification.

Update Information

We are adding and updating information about hundreds of thousands of companies every day, and periodically add companies to the queue for being updated. You can ask for a company to be added to the front of the queue for updating, especially useful if the address, directors, or other critical information has changed. Just click on the 'Update Information' button below to start the process.

[Update Information](https://www.zaubacorp.com/company-update/MOTHER-DAIRY-KERALA-LIMITED/U51222DL2003PLC151286) (https://www.zaubacorp.com/company-update/MOTHER-DAIRY-KERALA-LIMITED/U51222DL2003PLC151286)

All Companies (https://www.zaubacorp.com/companybrowse) \ All Directors (https://www.zaubacorp.com/directorsbrowse) \ All Trademarks (https://www.zaubacorp.com/trademarkbrowse) \ Septaz (https://www.septaz.com?utm_campaign=referral&utm_medium=zaubacorp&utm_source=footer) \ Import Export Data (https://www.zaubacorp.com?utm_campaign=referral&utm_medium=zaubacorp&utm_source=footer) \ About Us (https://zauba.com?utm_campaign=referral&utm_medium=zaubacorp&utm_source=footer) \ FAQ (https://www.zaubacorp.com/faq) \ Privacy Policy (https://www.zaubacorp.com/privacy-policy) \ Terms of Use (https://www.zaubacorp.com/terms) \ Refunds & Cancellation (https://www.zaubacorp.com/refunds-cancellation) \ Contact US (https://www.zaubacorp.com/contact-us)

© 2013 Zauba Technologies & Data Services Private Limited. All rights reserved.



(https://www.facebook.com/zaubatechnologies)



(https://twitter.com/wearezauba)

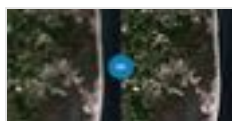


(https://www.linkedin.com/company/zauba)




[Products](#)
[Careers](https://zauba.company/careers.html?utm_campaign=referral&utm_medium=zaubacorp&utm_source=careers)
[Sign In](https://www.zaubacorp.com/user/login?destination=company/MOTHER-DAIRY-A-P-LIMITED/U15121DL2003PLC148228)
[Sign Up](https://www.zaubacorp.com/user/register?destination=company/MOTHER-DAIRY-A-P-LIMITED/U15121DL2003PLC148228)
 Company Director Trademark Address

Enter company name or cin

[Browse Companies by Activity, Age and Location](https://www.zaubacorp.com/company-list)
[Home](https://www.zaubacorp.com) - Mother Dairy (a.p.) Limited

**Buy High Res
Satellite Images**

 Easily Compare Image
Date, Price & Resolution
From All The Top Vendors.
Start Your Search/


MOTHER DAIRY (A.P.) LIMITED

As on: April 24, 2019

[Track this company](#)
[Basic Information](https://www.zaubacorp.com/company/MOTHER-DAIRY-A-P-LIMITED/U15121DL2003PLC148228)
[Documents](https://www.zaubacorp.com/documents/MOTHER-DAIRY-A-P-LIMITED/U15121DL2003PLC148228)
[Trademarks](https://www.zaubacorp.com/company-trademark/MOTHER-DAIRY-A-P-)
[LIMITED/U15121DL2003PLC148228\)](https://www.zaubacorp.com/company-trademark/MOTHER-DAIRY-A-P-LIMITED/U15121DL2003PLC148228)
[Directors](https://www.zaubacorp.com/company-directors/MOTHER-DAIRY-A-P-LIMITED/U15121DL2003PLC148228)
[Map](https://www.zaubacorp.com/company-map/MOTHER-DAIRY-A-P-LIMITED/U15121DL2003PLC148228/India)

Mother Dairy (a.p.) Limited is a Public incorporated on 21 March 2003. It is classified as Non-govt company and is registered at Registrar of Companies, Delhi. Its authorized share capital is Rs. 17,500,000 and its paid up capital is Rs. 10,000,000. It is involved in Production, processing and preservation of meat, fish, fruit vegetables, oils and fats.

Mother Dairy (a.p.) Limited's Annual General Meeting (AGM) was last held on 20 June 2005 and as per records from Ministry of Corporate Affairs (MCA), its balance sheet was last filed on 31 March 2005.

Mother Dairy (a.p.) Limited's Corporate Identification Number is (CIN) U15121DL2003PLC148228 and its registration number is 148228. Its Email address is kishor.mehta@motherdairy.com and its registered address is MOTHER DAIRY PATPARGANJ DELHI New Delhi DL 110092 IN , - , .

Current status of Mother Dairy (a.p.) Limited is - Not available for e-filing.

Company Details

CIN	U15121DL2003PLC148228 (https://www.zaubacorp.com/company/MOTHER-DAIRY-A-P-LIMITED/U15121DL2003PLC148228)
Company Name	MOTHER DAIRY (A.P.) LIMITED
Company Status	Not available for efilling
RoC	RoC-Delhi
Registration Number	148228
Company Category	Company limited by Shares
Company Sub Category	Non-govt company
Class of Company	Public
Date of Incorporation	21 March 2003
Age of Company	16 years, 1 month, 7 days
Activity	Production, processing and preservation of meat, fish, fruit vegetables, oils and fats. Click here (https://www.zaubacorp.com/company-list/nic-151-company.html) to see other companies involved in same activity.
Number of Members	7

Previous Names

Login (<https://www.zaubacorp.com/user/login?destination=company/MOTHER-DAIRY-A-P-LIMITED/U15121DL2003PLC148228>) to view previous names

Previous CINS

Login (<https://www.zaubacorp.com/user/login?destination=company/MOTHER-DAIRY-A-P-LIMITED/U15121DL2003PLC148228>) to view previous cins

Share Capital & Number of Employees

Legal Report

View all criminal and civil cases of MOTHER DAIRY (A.P.) LIMITED

[Purchase Legal Report \(https://www.zaubacorp.com/lawsuit-add-to-cart/U15121D\)](https://www.zaubacorp.com/lawsuit-add-to-cart/U15121D)

Financial Report

Balance Sheet

Paid-up Capital	
Reserves & Surplus	
Long Term Borrowings	
Short Term Borrowings	
Trade Payables	
Current Investments	
Inventories	
Trade Receivables	
Cash and Bank Balances	

Profit & Loss

Total Revenue (Turnover)	
Total Expenses	
Employee Benefit Expenses	
Finance Costs	
Depriciation	
Profit Before Tax	
Profit After Tax	

Click here (<https://www.zaubacorp.com/documents/MOTHER-DAIRY-A-P-LIMITED/U15121DL2003PLC148228>) to view all available financial documents and regulatory filings of MOTHER DAIRY (A.P.) LIMITED

Authorised Capital ₹17,500,000

Paid up capital ₹10,000,000

Number of Employees Login to view
(<https://www.zaubacorp.com/user/login?destination=company/MOTHER-DAIRY-A-P-LIMITED/U15121DL2003PLC148228>)

Listing and Annual Compliance Details

Listing status	Unlisted
Date of Last Annual General Meeting	20 June 2005
Date of Latest Balance Sheet	31 March 2005

Contact Details

Email ID: kishor.mehta@motherdairy.com

Website: Click here to add.

Address:

MOTHER DAIRY PATPARGANJ DELHI New Delhi DL 110092 IN



Director Details

DIN	Director Name	Designation	Appointment Date
-----	---------------	-------------	------------------

Directors not found.

Past Director Details

DIN	Director Name	Appointment Date	Cessation Date
-----	---------------	------------------	----------------

Login (<https://www.zaubacorp.com/user/login?destination=company/MOTHER-DAIRY-A-P-LIMITED/U15121DL2003PLC148228>) to view past directors.

Companies with Similar Address

CIN	Name	Address
U74120DL2009PTC195216	ARDEN TELECOM PRIVATE LIMITED (https://www.zaubacorp.com/company/ARDEN-TELECOM-PRIVATE-LIMITED/U74120DL2009PTC195216)	D-19 GROUND FLOOR, NEAR MOTHER DAIRY PANDAV NAGAR , NEW DELHI -110092 NEW DELHI East Delhi DL 110092 IN

U51216DL2003PLC148227	MOTHER DAIRY KERALA LIMITED (https://www.zaubacorp.com/company/MOTHER-DAIRY-KERALA-LIMITED/U51216DL2003PLC148227)	MOTHER DAIRY PATPARGANJ DELHI New Delhi DL 110092 IN
U51222DL2003PLC151286	MOTHER DAIRY KERALA LIMITED (https://www.zaubacorp.com/company/MOTHER-DAIRY-KERALA-LIMITED/U51222DL2003PLC151286)	MOTHER DAIRY PATPARGANJ DELHI New Delhi DL 110092 IN
U15111DL2003PLC148224	MOTHER DAIRY UTTARANCHAL LIMITED (https://www.zaubacorp.com/company/MOTHER-DAIRY-UTTARANCHAL-LIMITED/U15111DL2003PLC148224)	MOTHER DAIRY PATPARGANJ DELHI New Delhi DL 110092 IN
U15111DL2003PLC148225	PARAG MILKFOODS (U.P) LIMITED (https://www.zaubacorp.com/company/PARAG-MILKFOODS-U-P-LIMITED/U15111DL2003PLC148225)	MOTHER DAIRY PATPARGANJ DELHI New Delhi DL 110092 IN
U15121DL2003PLC148228	MOTHER DAIRY (A.P.) LIMITED (https://www.zaubacorp.com/company/MOTHER-DAIRY-A-P-LIMITED/U15121DL2003PLC148228)	MOTHER DAIRY PATPARGANJ DELHI New Delhi DL 110092 IN
U80900DL2013PTC257084	AZURE GLOBAL TRAINING SERVICES PRIVATE LIMITED (https://www.zaubacorp.com/company/AZURE-GLOBAL-TRAINING-SERVICES-PRIVATE-LIMITED/U80900DL2013PTC257084)	110, Dhruva CGHS Patparganj, Mother Dairy Plant New Delhi East Delhi DL 110092 IN
U74140DL2011PTC221523	ONS TOOLS AND ACCESSORIES PRIVATE LIMITED (https://www.zaubacorp.com/company/ONS-TOOLS-AND-ACCESSORIES-PRIVATE-LIMITED/U74140DL2011PTC221523)	HNO- C-89 PANDAV NAGAR PATPARGANJ OPPOSITE MOTHER DAIRY DELHI New Delhi DL 110092 IN
U16009DL2017PTC319655	TRIMURTI FRAGRANCES & FLAVOURS PRIVATE LIMITED (https://www.zaubacorp.com/company/TRIMURTI-FRAGRANCES-FLAVOURS-PRIVATE-LIMITED/U16009DL2017PTC319655)	Plot No.104, FIE, Patparganj, New Delhi -110092 (Delhi) India New Delhi East Delhi DL 110092 IN

[ress \(https://www.zaubacorp.com/company-by-address/PLOT-NO-104-FIE-PATPARGANJ-NEW-DELHI-110092-DELHI-INDIA-NEW-DELHI-EAST-DELHI-DL-110092-IN-\)](https://www.zaubacorp.com/company-by-address/PLOT-NO-104-FIE-PATPARGANJ-NEW-DELHI-110092-DELHI-INDIA-NEW-DELHI-EAST-DELHI-DL-110092-IN-)

Prosecution Details

S.No.	Defaulting Entities	Court Name	Prosecution Section	Date Of Order	Status
No prosecutions found					

Charges/Borrowing Details

Charge ID	Creation Date	Modification Date	Closure Date	Assets Under Charge	Amount	Charge Holder
No charges found						

Establishments Details

Establishment Name	City	Pincode	Address
No establishments found			

*Industry classification is derived from National Industrial Classification. If the company has changed line of business without intimating the Registrar or is a diversified business, classification may be different. We make no warranties about accuracy of industrial classification.

Update Information

We are adding and updating information about hundreds of thousands of companies every day, and periodically add companies to the queue for being updated. You can ask for a company to be added to the front of the queue for updating, especially useful if the address, directors, or other critical information has changed. Just click on the 'Update Information' button below to start the process.

[Update Information](#) (<https://www.zaubacorp.com/company-update/MOTHER-DAIRY-A-P-LIMITED/U15121DL2003PLC148228>)

All Companies (<https://www.zaubacorp.com/companybrowse>) \ All Directors (<https://www.zaubacorp.com/directorsbrowse>) \ All Trademarks (<https://www.zaubacorp.com/trademarkbrowse>) \ Septaz (https://www.septaz.com?utm_campaign=referral&utm_medium=zaubacorp&utm_source=footer) \ Import Export Data (https://www.zaubacorp.com?utm_campaign=referral&utm_medium=zaubacorp&utm_source=footer) \ About Us (https://zauba.com?utm_campaign=referral&utm_medium=zaubacorp&utm_source=footer) \ FAQ (<https://www.zaubacorp.com/faq>) \ Privacy Policy (<https://www.zaubacorp.com/privacy-policy>) \ Terms of Use (<https://www.zaubacorp.com/terms>) \ Refunds & Cancellation (<https://www.zaubacorp.com/refunds-cancellation>) \ Contact US (<https://www.zaubacorp.com/contact-us>)
© 2013 Zauba Technologies & Data Services Private Limited. All rights reserved.

<https://www.facebook.com/zaubatechnologies> <https://twitter.com/wearezauba> <https://www.linkedin.com/company/zauba>



[TOP OF PAGE](#)

[Products](#)[Careers \(https://zauba.company/careers.html?utm_campaign=referral&utm_medium=zaubacorp&utm_source=careers\)](https://zauba.company/careers.html?utm_campaign=referral&utm_medium=zaubacorp&utm_source=careers)[Sign In \(https://www.zaubacorp.com/user/login?destination=company/MOTHER-DAIRY-UTTARANCHAL-LIMITED/U15111DL2003PLC148224\)](https://www.zaubacorp.com/user/login?destination=company/MOTHER-DAIRY-UTTARANCHAL-LIMITED/U15111DL2003PLC148224)[Sign Up \(https://www.zaubacorp.com/user/register?destination=company/MOTHER-DAIRY-UTTARANCHAL-LIMITED/U15111DL2003PLC148224\)](https://www.zaubacorp.com/user/register?destination=company/MOTHER-DAIRY-UTTARANCHAL-LIMITED/U15111DL2003PLC148224)

Company Director Trademark Address

Enter company name or cin

[Browse Companies by Activity, Age and Location \(https://www.zaubacorp.com/company-list\)](https://www.zaubacorp.com/company-list)

[Home \(https://www.zaubacorp.com\)](https://www.zaubacorp.com) · [Mother Dairy Uttaranchal Limited](#)

MOTHER DAIRY UTTARANCHAL LIMITED

As on: April 23, 2019

[Track this company](#)

[Basic Information \(https://www.zaubacorp.com/company/MOTHER-DAIRY-UTTARANCHAL-](https://www.zaubacorp.com/company/MOTHER-DAIRY-UTTARANCHAL-LIMITED/U15111DL2003PLC148224)

[LIMITED/U15111DL2003PLC148224\)](https://www.zaubacorp.com/company/MOTHER-DAIRY-UTTARANCHAL-LIMITED/U15111DL2003PLC148224)

[Documents \(https://www.zaubacorp.com/documents/MOTHER-DAIRY-UTTARANCHAL-](https://www.zaubacorp.com/documents/MOTHER-DAIRY-UTTARANCHAL-LIMITED/U15111DL2003PLC148224)

[LIMITED/U15111DL2003PLC148224\)](https://www.zaubacorp.com/documents/MOTHER-DAIRY-UTTARANCHAL-LIMITED/U15111DL2003PLC148224)

[Trademarks \(https://www.zaubacorp.com/company-trademark/MOTHER-DAIRY-UTTARANCHAL-](https://www.zaubacorp.com/company-trademark/MOTHER-DAIRY-UTTARANCHAL-LIMITED/U15111DL2003PLC148224)

[LIMITED/U15111DL2003PLC148224\)](https://www.zaubacorp.com/company-trademark/MOTHER-DAIRY-UTTARANCHAL-LIMITED/U15111DL2003PLC148224)

[Directors \(https://www.zaubacorp.com/company-directors/MOTHER-DAIRY-UTTARANCHAL-](https://www.zaubacorp.com/company-directors/MOTHER-DAIRY-UTTARANCHAL-LIMITED/U15111DL2003PLC148224)

[LIMITED/U15111DL2003PLC148224\)](https://www.zaubacorp.com/company-directors/MOTHER-DAIRY-UTTARANCHAL-LIMITED/U15111DL2003PLC148224)

[Map \(https://www.zaubacorp.com/company-map/MOTHER-DAIRY-UTTARANCHAL-](https://www.zaubacorp.com/company-map/MOTHER-DAIRY-UTTARANCHAL-LIMITED/U15111DL2003PLC148224/India)

[LIMITED/U15111DL2003PLC148224/India\)](https://www.zaubacorp.com/company-map/MOTHER-DAIRY-UTTARANCHAL-LIMITED/U15111DL2003PLC148224/India)

Mother Dairy Uttaranchal Limited is a Public incorporated on 17 October 2003. It is classified as Non-govt company and is registered at Registrar of Companies, Delhi. Its authorized share capital is Rs. 17,500,000 and its paid up capital is Rs. 10,000,000. It is involved in Production, processing and

preservation of meat, fish, fruit vegetables, oils and fats.

Mother Dairy Uttaranchal Limited's Annual General Meeting (AGM) was last held on 05 July 2005 and as per records from Ministry of Corporate Affairs (MCA), its balance sheet was last filed on 31 March 2005.

Mother Dairy Uttaranchal Limited's Corporate Identification Number is (CIN) U15111DL2003PLC148224 and its registration number is 148224. Its Email address is kishor.mehta@motherdairy.com and its registered address is MOTHER DAIRY PATPARGANJ DELHI New Delhi DL 110092 IN , - , .

Current status of Mother Dairy Uttaranchal Limited is - Amalgamated.

Company Details

CIN	U15111DL2003PLC148224 (https://www.zaubacorp.com/company/MOTHER-DAIRY-UTTARANCHAL-LIMITED/U15111DL2003PLC148224)
Company Name	MOTHER DAIRY UTTARANCHAL LIMITED
Company Status	Amalgamated
RoC	RoC-Delhi
Registration Number	148224
Company Category	Company limited by Shares
Company Sub Category	Non-govt company
Class of Company	Public
Date of Incorporation	17 October 2003
Age of Company	15 years, 6 month, 11 days
Activity	Production, processing and preservation of meat, fish, fruit vegetables, oils and fats. Click here (https://www.zaubacorp.com/company-list/nic-151-company.html) to see other companies involved in same activity.
Number of Members	-

Previous Names

Login (<https://www.zaubacorp.com/user/login?destination=company/MOTHER-DAIRY-UTTARANCHAL-LIMITED/U15111DL2003PLC148224>) to view previous names

Previous CINS

Legal Report

View all criminal and civil cases of MOTHER DAIRY UTTARANCHAL LIMITED

[Purchase Legal Report \(https://www.zaubacorp.com/lawsuit-add-to-cart/U15111D\)](https://www.zaubacorp.com/lawsuit-add-to-cart/U15111D)

Financial Report

Balance Sheet

Paid-up Capital	
Reserves & Surplus	
Long Term Borrowings	
Short Term Borrowings	
Trade Payables	
Current Investments	
Inventories	
Trade Receivables	
Cash and Bank Balances	

Profit & Loss

Total Revenue (Turnover)	
Total Expenses	
Employee Benefit Expenses	
Finance Costs	
Depreciation	
Profit Before Tax	
Profit After Tax	

Click here (<https://www.zaubacorp.com/documents/MOTHER-DAIRY-UTTARANCHAL-LIMITED/U15111DL2003PLC148224>) to view all available financial documents and regulatory filings of MOTHER DAIRY UTTARANCHAL LIMITED

Login (<https://www.zaubacorp.com/user/login?destination=company/MOTHER-DAIRY-UTTARANCHAL-LIMITED/U15111DL2003PLC148224>) to view previous cins

Share Capital & Number of Employees

Authorised Capital ₹17,500,000

Paid up capital ₹10,000,000

Number of Employees Login to view (<https://www.zaubacorp.com/user/login?destination=company/MOTHER-DAIRY-UTTARANCHAL-LIMITED/U15111DL2003PLC148224>)

Listing and Annual Compliance Details

Listing status	Unlisted
Date of Last Annual General Meeting	05 July 2005
Date of Latest Balance Sheet	31 March 2005

Contact Details

Email ID: kishor.mehta@motherdairy.com

Website: Click here to add.

Address:

MOTHER DAIRY PATPARGANJ DELHI New Delhi DL 110092 IN



Director Details

DIN	Director Name	Designation	Appointment Date
-----	---------------	-------------	------------------

Directors not found.

Past Director Details

DIN	Director Name	Appointment Date	Cessation Date
-----	---------------	------------------	----------------

Login (<https://www.zaubacorp.com/user/login?destination=company/MOTHER-DAIRY-UTTARANCHAL-LIMITED/U15111DL2003PLC148224>) to view past directors.

Companies with Similar Address

CIN	Name	Address
U74120DL2009PTC195216	ARDEN TELECOM PRIVATE LIMITED (https://www.zaubacorp.com/company/ARDEN-TELECOM-PRIVATE-LIMITED/U74120DL2009PTC195216)	D-19 GROUND FLOOR, NEAR MOTHER DAIRY PANDAV NAGAR , NEW DELHI -110092 NEW DELHI East Delhi DL 110092 IN
U51216DL2003PLC148227	MOTHER DAIRY KERALA LIMITED (https://www.zaubacorp.com/company/MOTHER-DAIRY-KERALA-LIMITED/U51216DL2003PLC148227)	MOTHER DAIRY PATPARGANJ DELHI New Delhi DL 110092 IN
U51222DL2003PLC151286	MOTHER DAIRY KERALA LIMITED (https://www.zaubacorp.com/company/MOTHER-DAIRY-KERALA-LIMITED/U51222DL2003PLC151286)	MOTHER DAIRY PATPARGANJ DELHI New Delhi DL 110092 IN
U15111DL2003PLC148224	MOTHER DAIRY UTTARANCHAL LIMITED (https://www.zaubacorp.com/company/MOTHER-DAIRY-UTTARANCHAL-LIMITED/U15111DL2003PLC148224)	MOTHER DAIRY PATPARGANJ DELHI New Delhi DL 110092 IN
U15111DL2003PLC148225	PARAG MILKFOODS (U.P) LIMITED (https://www.zaubacorp.com/company/PARAG-MILKFOODS-U-P-LIMITED/U15111DL2003PLC148225)	MOTHER DAIRY PATPARGANJ DELHI New Delhi DL 110092 IN
U15121DL2003PLC148228	MOTHER DAIRY (A.P) LIMITED (https://www.zaubacorp.com/company/MOTHER-DAIRY-A-P-LIMITED/U15121DL2003PLC148228)	MOTHER DAIRY PATPARGANJ DELHI New Delhi DL 110092 IN
U80900DL2013PTC257084	AZURE GLOBAL TRAINING SERVICES PRIVATE LIMITED (https://www.zaubacorp.com/company/AZURE-GLOBAL-TRAINING-SERVICES-PRIVATE-LIMITED/U80900DL2013PTC257084)	110, Dhruva CGHS Patparganj, Mother Dairy Plant New Delhi East Delhi DL 110092 IN
U74140DL2011PTC221523	ONS TOOLS AND ACCESSORIES PRIVATE LIMITED (https://www.zaubacorp.com/company/ONS-TOOLS-AND-ACCESSORIES-PRIVATE-LIMITED/U74140DL2011PTC221523)	HNO- C-89 PANDAV NAGAR PATPARGANJ OPPOSITE MOTHER DAIRY DELHI New Delhi DL 110092 IN
U16009DL2017PTC319655	TRIMURTI FRAGRANCES & FLAVOURS PRIVATE LIMITED (https://www.zaubacorp.com/company/TRIMURTI-FRAGRANCES-FLAVOURS-PRIVATE-LIMITED/U16009DL2017PTC319655)	Plot No.104, FIE, Patparganj, New Delhi -110092 (Delhi) India New Delhi East Delhi DL 110092 IN

[ress \(https://www.zaubacorp.com/company-by-address/PLOT-NO-104-FIE-PATPARGANJ-NEW-DELHI-110092-DELHI-INDIA-NEW-DELHI-EAST-DELHI-DL-110092-IN-\)](https://www.zaubacorp.com/company-by-address/PLOT-NO-104-FIE-PATPARGANJ-NEW-DELHI-110092-DELHI-INDIA-NEW-DELHI-EAST-DELHI-DL-110092-IN-)

Prosecution Details

S.No.	Defaulting Entities	Court Name	Prosecution Section	Date Of Order	Status
No prosecutions found					

Charges/Borrowing Details

Charge ID	Creation Date	Modification Date	Closure Date	Assets Under Charge	Amount	Charge Holder
No charges found						

Establishments Details

Establishment Name	City	Pincode	Address
No establishments found			

*Industry classification is derived from National Industrial Classification. If the company has changed line of business without intimating the Registrar or is a diversified business, classification may be different. We make no warranties about accuracy of industrial classification.

Update Information

We are adding and updating information about hundreds of thousands of companies every day, and periodically add companies to the queue for being updated. You can ask for a company to be added to the front of the queue for updating, especially useful if the address, directors, or other critical information has changed. Just click on the 'Update Information' button below to start the process.

 (<https://www.zaubacorp.com/company-update/MOTHER-DAIRY-UTTARANCHAL-LIMITED/U15111DL2003PLC148224>)

All Companies (<https://www.zaubacorp.com/companybrowse>) \ All Directors (<https://www.zaubacorp.com/directorsbrowse>) \ All Trademarks (<https://www.zaubacorp.com/trademarkbrowse>) \ Septaz (https://www.septaz.com?utm_campaign=referral&utm_medium=zaubacorp&utm_source=footer) \ Import Export Data (<https://www.zaubacorp.com/import-export-data>) \ About Us (https://zauba.com/company?utm_campaign=referral&utm_medium=zaubacorp&utm_source=footer) \ FAQ (<https://www.zaubacorp.com/faq>) \ Privacy Policy (<https://www.zaubacorp.com/privacy-policy>) \ Terms of Use (<https://www.zaubacorp.com/terms>) \ Refunds & Cancellation (<https://www.zaubacorp.com/refunds-cancellation>) \ Contact US (<https://www.zaubacorp.com/contact-us>)
© 2013 Zauba Technologies & Data Services Private Limited. All rights reserved.



(<https://www.facebook.com/zaubatechnologies>)



(<https://twitter.com/wearezauba>)



(<https://www.linkedin.com/company/zauba>)



[Products](#)[Careers](https://zauba.company/careers.html?utm_campaign=referral&utm_medium=zaubacorp&utm_source=careers)[Sign In](https://www.zaubacorp.com/user/login?destination=company/PARAG-MILKFOODS-U-P-LIMITED/U15111DL2003PLC148225)[Sign Up](https://www.zaubacorp.com/user/register?destination=company/PARAG-MILKFOODS-U-P-LIMITED/U15111DL2003PLC148225)

Company Director Trademark Address

Enter company name or cin

[Browse Companies by Activity, Age and Location](https://www.zaubacorp.com/company-list)

[Home](https://www.zaubacorp.com) - Parag Milkfoods (u.p.) Limited

PARAG MILKFOODS (U.P.) LIMITED

As on: April 23, 2019

[Track this company](#)

[Basic Information](https://www.zaubacorp.com/company/PARAG-MILKFOODS-U-P-LIMITED/U15111DL2003PLC148225)

[Documents](https://www.zaubacorp.com/documents/PARAG-MILKFOODS-U-P-LIMITED/U15111DL2003PLC148225)

[Trademarks](https://www.zaubacorp.com/company-trademark/PARAG-MILKFOODS-U-P-LIMITED/U15111DL2003PLC148225)

[Directors](https://www.zaubacorp.com/company-directors/PARAG-MILKFOODS-U-P-LIMITED/U15111DL2003PLC148225)

[Map](https://www.zaubacorp.com/company-map/PARAG-MILKFOODS-U-P-LIMITED/U15111DL2003PLC148225/India)

Parag Milkfoods (u.p.) Limited is a Public incorporated on 28 August 2003. It is classified as Non-govt company and is registered at Registrar of Companies, Delhi. Its authorized share capital is Rs. 17,500,000 and its paid up capital is Rs. 10,000,000. It is involved in Production, processing and preservation of meat, fish, fruit vegetables, oils and fats.

Parag Milkfoods (u.p.) Limited's Annual General Meeting (AGM) was last held on 22 September 2005 and as per records from Ministry of Corporate Affairs (MCA), its balance sheet was last filed on 31 March 2005.

Parag Milkfoods (u.p.) Limited's Corporate Identification Number is (CIN) U15111DL2003PLC148225 and its registration number is 148225. Its Email address is kishor.mehta@motherdairy.com and its registered address is MOTHER DAIRY PATPARGANJ DELHI New Delhi DL 110092 IN , , .

Current status of Parag Milkfoods (u.p.) Limited is - Amalgamated.

Company Details

CIN	U15111DL2003PLC148225 (https://www.zaubacorp.com/company/PARAG-MILKFOODS-U-P-LIMITED/U15111DL2003PLC148225)
Company Name	PARAG MILKFOODS (U.P.) LIMITED
Company Status	Amalgamated
RoC	RoC-Delhi
Registration Number	148225
Company Category	Company limited by Shares
Company Sub Category	Non-govt company
Class of Company	Public
Date of Incorporation	28 August 2003
Age of Company	15 years, 8 month, 0 days
Activity	Production, processing and preservation of meat, fish, fruit vegetables, oils and fats. Click here (https://www.zaubacorp.com/company-list/nic-151-company.html) to see other companies involved in same activity.
Number of Members	-

Previous Names

Login (<https://www.zaubacorp.com/user/login?destination=company/PARAG-MILKFOODS-U-P-LIMITED/U15111DL2003PLC148225>) to view previous names

Previous CINS

Login (<https://www.zaubacorp.com/user/login?destination=company/PARAG-MILKFOODS-U-P-LIMITED/U15111DL2003PLC148225>) to view previous cins

Legal Report

View all criminal and civil cases of PARAG MILKFOODS (U.P.) LIMITED

[Purchase Legal Report \(https://www.zaubacorp.com/lawsuit-add-to-cart/U15111D\)](https://www.zaubacorp.com/lawsuit-add-to-cart/U15111D)

Financial Report

Balance Sheet

Paid-up Capital	
Reserves & Surplus	
Long Term Borrowings	
Short Term Borrowings	
Trade Payables	
Current Investments	
Inventories	
Trade Receivables	
Cash and Bank Balances	

Profit & Loss

Total Revenue (Turnover)	
Total Expenses	
Employee Benefit Expenses	
Finance Costs	
Depriciation	
Profit Before Tax	
Profit After Tax	

Click here (<https://www.zaubacorp.com/documents/PARAG-MILKFOODS-U-P-LIMITED/U15111DL2003PLC148225>) to view all available financial documents and regulatory filings of PARAG MILKFOODS (U.P.) LIMITED

Share Capital & Number of Employees

Authorised Capital ₹17,500,000

Paid up capital ₹10,000,000

Number of Employees Login to view
(<https://www.zaubacorp.com/user/login?destination=company/PARAG-MILKFOODS-U-P-LIMITED/U15111DL2003PLC148225>)

Listing and Annual Compliance Details

Listing status	Unlisted
Date of Last Annual General Meeting	22 September 2005
Date of Latest Balance Sheet	31 March 2005

Contact Details

Email ID: kishor.mehta@motherdairy.com

Website: Click here to add.

Address:

MOTHER DAIRY PATPARGANJ DELHI New Delhi DL 110092 IN



Director Details

DIN	Director Name	Designation	Appointment Date
-----	---------------	-------------	------------------

Directors not found.

Past Director Details

DIN	Director Name	Appointment Date	Cessation Date
-----	---------------	------------------	----------------

Login (<https://www.zaubacorp.com/user/login?destination=company/PARAG-MILKFOODS-U-P-LIMITED/U15111DL2003PLC148225>) to view past directors.

Companies with Similar Address

CIN	Name	Address
-----	------	---------

U74120DL2009PTC195216	ARDEN TELECOM PRIVATE LIMITED (https://www.zaubacorp.com/company/ARDEN-TELECOM-PRIVATE-LIMITED/U74120DL2009PTC195216)	D-19 GROUND FLOOR, NEAR MOTHER DAIRY PANDAV NAGAR , NEW DELHI -110092 NEW DELHI East Delhi DL 110092 IN
U51216DL2003PLC148227	MOTHER DAIRY KERALA LIMITED (https://www.zaubacorp.com/company/MOTHER-DAIRY-KERALA-LIMITED/U51216DL2003PLC148227)	MOTHER DAIRY PATPARGANJ DELHI New Delhi DL 110092 IN
U51222DL2003PLC151286	MOTHER DAIRY KERALA LIMITED (https://www.zaubacorp.com/company/MOTHER-DAIRY-KERALA-LIMITED/U51222DL2003PLC151286)	MOTHER DAIRY PATPARGANJ DELHI New Delhi DL 110092 IN
U15111DL2003PLC148224	MOTHER DAIRY UTTARANCHAL LIMITED (https://www.zaubacorp.com/company/MOTHER-DAIRY-UTTARANCHAL-LIMITED/U15111DL2003PLC148224)	MOTHER DAIRY PATPARGANJ DELHI New Delhi DL 110092 IN
U15111DL2003PLC148225	PARAG MILKFOODS (U.P.) LIMITED (https://www.zaubacorp.com/company/PARAG-MILKFOODS-U-P-LIMITED/U15111DL2003PLC148225)	MOTHER DAIRY PATPARGANJ DELHI New Delhi DL 110092 IN
U15121DL2003PLC148228	MOTHER DAIRY (A.P.) LIMITED (https://www.zaubacorp.com/company/MOTHER-DAIRY-A-P-LIMITED/U15121DL2003PLC148228)	MOTHER DAIRY PATPARGANJ DELHI New Delhi DL 110092 IN
U80900DL2013PTC257084	AZURE GLOBAL TRAINING SERVICES PRIVATE LIMITED (https://www.zaubacorp.com/company/AZURE-GLOBAL-TRAINING-SERVICES-PRIVATE-LIMITED/U80900DL2013PTC257084)	110, Dhruva CGHS Patparganj, Mother Dairy Plant New Delhi East Delhi DL 110092 IN
U74140DL2011PTC221523	ONS TOOLS AND ACCESSORIES PRIVATE LIMITED (https://www.zaubacorp.com/company/ONS-TOOLS-AND-ACCESSORIES-PRIVATE-LIMITED/U74140DL2011PTC221523)	HNO- C-89 PANDAV NAGAR PATPARGANJ OPPOSITE MOTHER DAIRY DELHI New Delhi DL 110092 IN
U16009DL2017PTC319655	TRIMURTI FRAGRANCES & FLAVOURS PRIVATE LIMITED (https://www.zaubacorp.com/company/TRIMURTI-FRAGRANCES-FLAVOURS-PRIVATE-LIMITED/U16009DL2017PTC319655)	Plot No.104, FIE, Patparganj, New Delhi -110092 (Delhi) India New Delhi East Delhi DL 110092 IN

[ress \(https://www.zaubacorp.com/company-by-address/PLOT-NO-104-FIE-PATPARGANJ-NEW-DELHI-110092-DELHI-INDIA-NEW-DELHI-EAST-DELHI-DL-110092-IN-\)](https://www.zaubacorp.com/company-by-address/PLOT-NO-104-FIE-PATPARGANJ-NEW-DELHI-110092-DELHI-INDIA-NEW-DELHI-EAST-DELHI-DL-110092-IN-)

Prosecution Details

S.No.	Defaulting Entities	Court Name	Prosecution Section	Date Of Order	Status
No prosecutions found					

Charges/Borrowing Details

Charge ID	Creation Date	Modification Date	Closure Date	Assets Under Charge	Amount	Charge Holder
No charges found						

Establishments Details

Establishment Name	City	Pincode	Address
No establishments found			

*Industry classification is derived from National Industrial Classification. If the company has changed line of business without intimating the Registrar or is a diversified business, classification may be different. We make no warranties about accuracy of industrial classification.

Update Information

We are adding and updating information about hundreds of thousands of companies every day, and periodically add companies to the queue for being updated. You can ask for a company to be added to the front of the queue for updating, especially useful if the address, directors, or other critical information has changed. Just click on the 'Update Information' button below to start the process.

[Update Information](https://www.zaubacorp.com/company-update/PARAG-MILKFOODS-U-P-LIMITED/U15111DL2003PLC148225) (https://www.zaubacorp.com/company-update/PARAG-MILKFOODS-U-P-LIMITED/U15111DL2003PLC148225)

All Companies (<https://www.zaubacorp.com/companybrowse>) \ All Directors (<https://www.zaubacorp.com/directorsbrowse>) \ All Trademarks (<https://www.zaubacorp.com/trademarkbrowse>) \ Septaz (https://www.septaz.com?utm_campaign=referral&utm_medium=zaubacorp&utm_source=footer) \ Import Export Data (https://www.zaubacorp.com?utm_campaign=referral&utm_medium=zaubacorp&utm_source=footer) \ About Us (https://zauba.com?utm_campaign=referral&utm_medium=zaubacorp&utm_source=footer) \ FAQ (<https://www.zaubacorp.com/faq>) \ Privacy Policy (<https://www.zaubacorp.com/privacy-policy>) \ Terms of Use (<https://www.zaubacorp.com/terms>) \ Refunds & Cancellation (<https://www.zaubacorp.com/refunds-cancellation>) \ Contact US (<https://www.zaubacorp.com/contact-us>)
© 2013 Zauba Technologies & Data Services Private Limited. All rights reserved.



(<https://www.facebook.com/zaubatechnologies>)



(<https://twitter.com/wearezauba>)



(<https://www.linkedin.com/company/zauba>)



[Products](#)[Careers \(https://zauba.company/careers.html?utm_campaign=referral&utm_medium=zaubacorp&utm_source=careers\)](https://zauba.company/careers.html?utm_campaign=referral&utm_medium=zaubacorp&utm_source=careers)[Sign In \(https://www.zaubacorp.com/user/login?destination=company/IDMC-LIMITED/U29299GJ1992PLC018283\)](https://www.zaubacorp.com/user/login?destination=company/IDMC-LIMITED/U29299GJ1992PLC018283)[Sign Up \(https://www.zaubacorp.com/user/register?destination=company/IDMC-LIMITED/U29299GJ1992PLC018283\)](https://www.zaubacorp.com/user/register?destination=company/IDMC-LIMITED/U29299GJ1992PLC018283)

Company Director Trademark Address

Enter company name or cin

[Browse Companies by Activity, Age and Location \(https://www.zaubacorp.com/company-list\)](https://www.zaubacorp.com/company-list)

[Home \(https://www.zaubacorp.com\)](https://www.zaubacorp.com) > Idmc Limited

IDMC LIMITED

As on: April 23, 2019

[Track this company](#)

[Basic Information \(https://www.zaubacorp.com/company/IDMC-LIMITED/U29299GJ1992PLC018283\)](https://www.zaubacorp.com/company/IDMC-LIMITED/U29299GJ1992PLC018283)

[Documents \(https://www.zaubacorp.com/documents/IDMC-LIMITED/U29299GJ1992PLC018283\)](https://www.zaubacorp.com/documents/IDMC-LIMITED/U29299GJ1992PLC018283)

[Trademarks \(https://www.zaubacorp.com/company-trademark/IDMC-LIMITED/U29299GJ1992PLC018283\)](https://www.zaubacorp.com/company-trademark/IDMC-LIMITED/U29299GJ1992PLC018283)

[Directors \(https://www.zaubacorp.com/company-directors/IDMC-LIMITED/U29299GJ1992PLC018283\)](https://www.zaubacorp.com/company-directors/IDMC-LIMITED/U29299GJ1992PLC018283)

[Map \(https://www.zaubacorp.com/company-map/IDMC-LIMITED/U29299GJ1992PLC018283/India\)](https://www.zaubacorp.com/company-map/IDMC-LIMITED/U29299GJ1992PLC018283/India)

Idmc Limited is a Public incorporated on 14 September 1992. It is classified as Non-govt company and is registered at Registrar of Companies, Ahmedabad. Its authorized share capital is Rs. 500,000,000 and its paid up capital is Rs. 121,445,440. It is involved in Manufacture of special purpose machinery

Idmc Limited's Annual General Meeting (AGM) was last held on 08 August 2018 and as per records from Ministry of Corporate Affairs (MCA), its balance sheet was last filed on 31 March 2018.

Directors of Idmc Limited are Nalin Mansukhlal Shah, Sangramsinh Raysangbhai Chaudhary, Dilip Rath, Mankal Shankar Sriram, Yuvaraj Yashvant Patil, Ashis Kumar Chakraborty, Alka Anil Mahajan, Prakash Harikisan Maheshwari, Rajesh Subramaniam, .

Idmc Limited's Corporate Identification Number is (CIN) U29299GJ1992PLC018283 and its registration number is 18283. Its Email address is kinnarishah@idmc.com and its registered address is 124 128 GIDC ESTATE VITHALINDL ANAND GJ 000000 IN , - , .

Current status of Idmc Limited is - Active.

Company Details

Legal Report

CIN	U29299GJ1992PLC018283 (https://www.zaubacorp.com/company/IDMC-LIMITED/U29299GJ1992PLC018283)
Company Name	IDMC LIMITED
Company Status	Active
RoC	RoC-Ahmedabad
Registration Number	18283
Company Category	Company limited by Shares
Company Sub Category	Non-govt company
Class of Company	Public
Date of Incorporation	14 September 1992
Age of Company	26 years, 7 month, 14 days
Activity	Manufacture of special purpose machinery Click here (https://www.zaubacorp.com/company-list/nic-292-company.html) to see other companies involved in same activity.
Number of Members	-

Previous Names

Login (<https://www.zaubacorp.com/user/login?destination=company/IDMC-LIMITED/U29299GJ1992PLC018283>) to view previous names

Previous CINS

Login (<https://www.zaubacorp.com/user/login?destination=company/IDMC-LIMITED/U29299GJ1992PLC018283>) to view previous cins

Share Capital & Number of Employees

Authorised Capital	₹500,000,000
Paid up capital	₹121,445,440

View all criminal and civil cases of IDMC LIMITED

[Purchase Legal Report \(https://www.zaubacorp.com/lawsuit-add-to-cart/U29299G\)](https://www.zaubacorp.com/lawsuit-add-to-cart/U29299G)

Financial Report

Balance Sheet

Paid-up Capital	🔒
Reserves & Surplus	🔒
Long Term Borrowings	🔒
Short Term Borrowings	🔒
Trade Payables	🔒
Current Investments	🔒
Inventories	🔒
Trade Receivables	🔒
Cash and Bank Balances	🔒

Profit & Loss

Total Revenue (Turnover)	🔒
Total Expenses	🔒
Employee Benefit Expenses	🔒
Finance Costs	🔒
Depriciation	🔒
Profit Before Tax	🔒
Profit After Tax	🔒

Unlock complete report with historical financials and view all 2,433 documents for ₹499 only

[Add to Cart \(https://www.zaut\)](https://www.zaut)

✔ Graphical report containing historical financial performance. Click Here (<https://www.zaubacorp.com/company-report/L85110KA1981PLC013115>) to view financial report of Infosys Ltd.

✔ Lifetime access to all documents

✔ Download all 2,433 documents in one click

✔ View Events Timeline - List of all company events since inception. Click Here (<https://www.zaubacorp.com/company-events/L85110KA1981PLC013115>) to view Events Timeline of Infosys Ltd.

Number of Employees [Login to view](https://www.zaubacorp.com/user/login?destination=company/IDMC-LIMITED/U29299GJ1992PLC018283)
 (https://www.zaubacorp.com/user/login?destination=company/IDMC-LIMITED/U29299GJ1992PLC018283)

Listing and Annual Compliance Details

Listing status	Unlisted
Date of Last Annual General Meeting	08 August 2018
Date of Latest Balance Sheet	31 March 2018

Contact Details

Email ID: kinnarishah@idmc.com

Website: [Click here to add.](#)

Address:

124 128 GIDC ESTATE VITHALINDL ANAND GJ 000000 IN



Director Details

DIN	Director Name	Designation	Appointment Date	
00882723	NALIN MANSUKHLAL SHAH (https://www.zaubacorp.com/director/NALIN-MANSUKHLAL-SHAH/00882723)	Additional Director	11 March 2019	View other directorships
01850128	SANGRAMSINH RAYSANGBHAI CHAUDHARY (https://www.zaubacorp.com/director/SANGRAMSINH-RAYSANGBHAI-CHAUDHARY/01850128)	Director	16 March 2012	View other directorships
05163623	DILIP RATH (https://www.zaubacorp.com/director/DILIP-RATH/05163623)	Director	21 December 2011	View other directorships
00588922	MANKAL SHANKAR SRIRAM (https://www.zaubacorp.com/director/MANKAL-SHANKAR-SRIRAM/00588922)	Director	13 January 2017	View other directorships
07058130	YUVARAJ YASHVANT PATIL (https://www.zaubacorp.com/director/YUVARAJ-YASHVANT-PATIL/07058130)	Director	13 January 2017	View other directorships
07706751	ASHIS KUMAR CHAKRABORTY (https://www.zaubacorp.com/director/ASHIS-KUMAR-CHAKRABORTY/07706751)	Director	13 January 2017	View other directorships
07802003		Director		

	ALKA ANIL MAHAJAN (https://www.zaubacorp.com/director/ALKA-ANIL-MAHAJAN/07802003)		27 April 2017	View other directorships
08087185	PRAKASH HARIKISAN MAHESHWARI (https://www.zaubacorp.com/director/PRAKASH-HARIKISAN-MAHESHWARI/08087185)	Wholetime Director	08 August 2018	View other directorships
07127772	RAJESH SUBRAMANIAM (https://www.zaubacorp.com/director/RAJESH-SUBRAMANIAM/07127772)	Managing Director	01 April 2015	View other directorships

Past Director Details

DIN	Director Name	Appointment Date	Cessation Date
-----	---------------	------------------	----------------

Login (<https://www.zaubacorp.com/user/login?destination=company/IDMC-LIMITED/U29299GJ1992PLC018283>) to view past directors.

Companies with Similar Address

CIN	Name	Address
U24231GJ1994PTC021881	MARIGOLD COATINGS PVT LTD (https://www.zaubacorp.com/company/MARIGOLD-COATINGS-PVT-LTD/U24231GJ1994PTC021881)	PLOT NO.1217,GIDC ESTATE,VITHAL UDHYOGNAGAR,ANAND Anand GJ 000000 IN
U63096GJ1995PTC028118	VISHAL ROADLINES (GUJARAT) PVT. LTD (https://www.zaubacorp.com/company/VISHAL-ROADLINES-GUJARAT-PVT-LTD/U63096GJ1995PTC028118)	PLOT NO. 9A/2. SAMGEETA,COMPOUND ,GIDC ESTATE VITHAL UDYOGNAGAR, ANAND. Anand GJ 000000 IN
U51909GJ1992PLC017578	MIG-METALLOGEN (INDIA) LTD (https://www.zaubacorp.com/company/MIG-METALLOGEN-INDIA-LTD/U51909GJ1992PLC017578)	19/20, G.I.D.C ESTATE,VITHAL UYODNAGR,ANAND. Anand GJ 000000 IN
U26941GJ1986PTC008413	WIZARD ELECTRICALS AND ELECTRONICS PVT.LTD. (https://www.zaubacorp.com/company/WIZARD-ELECTRICALS-AND-ELECTRONICS-PVT-LTD-/U26941GJ1986PTC008413)	157,GIDC ESTATE PO.VITHALUDYOGNAGAR-388 121 TA.ANAND DIST.KAIRA GJ 000000 IN
U67120GJ1997PTC031660	OSWAL FURNACES PRIVATE LIMITED (https://www.zaubacorp.com/company/OSWAL-FURNACES-PRIVATE-LIMITED/U67120GJ1997PTC031660)	142/A, GIDC. ESTATEVITHAL UDYOG NAGAR, ANAND Anand GJ 000000 IN
U65910GJ1994PLC022044	JAFILIN FINANCE LIMITED (https://www.zaubacorp.com/company/JAFILIN-FINANCE-LIMITED/U65910GJ1994PLC022044)	KASHI ESTATE,GANDHIVAD CHARRASTA,ANAND. Anand GJ 000000 IN
U55101GJ1995PLC024174	AJWA HOLIDAY RESORT (INDIA) LIMITED (https://www.zaubacorp.com/company/AJWA-HOLIDAY-RESORT-INDIA-LIMITED/U55101GJ1995PLC024174)	SATHI ESTATE,NAYA PADKAR,ANAND. Anand GJ 000000 IN
U24231GJ1993PLC019578	SHRI RANG DYESTUFF LIMITED (https://www.zaubacorp.com/company/SHRI-RANG-DYESTUFF-LIMITED/U24231GJ1993PLC019578)	822,GIDC,ESTATE,PHASE-1,VATWAINDL.ESTATE AHMEDABAD. GJ 000000 IN
U29120GJ1992PTC018116	KONARK PLASTOMECH PRIVATE LIMITED (https://www.zaubacorp.com/company/KONARK-PLASTOMECH-PRIVATE-LIMITED/U29120GJ1992PTC018116)	81 GIDC ESTATE OPP-GIDC WATERTANK AMBICA NAGAR ROAD ODHAV AHMEDABAD GJ 000000 IN

[address \(https://www.zaubacorp.com/company-by-address/81-GIDC-ESTATE-OPP-GIDC-WATERTANK-AMBICA-NAGAR-ROAD-ODHAV-AHMEDABAD-GJ-000000-IN-\)](https://www.zaubacorp.com/company-by-address/81-GIDC-ESTATE-OPP-GIDC-WATERTANK-AMBICA-NAGAR-ROAD-ODHAV-AHMEDABAD-GJ-000000-IN-)

Prosecution Details

S.No.	Defaulting Entities	Court Name	Prosecution Section	Date Of Order	Status
No prosecutions found					

Charges/Borrowing Details

Charge ID	Creation Date	Modification Date	Closure Date	Assets Under Charge	Amount	Charge Holder
10144863	2009-02-04	2011-07-12	2012-11-01		2,210,000,000	INDIAN BANK
10144879	2009-02-04	-	2012-11-01		370,000,000	INDIAN BANK
10344136	2012-03-22	2018-09-20	-	Book debts; Movable property (not being pledge); current assets, movable excluding P & M, Furniture	1,300,000,000	NATIONAL DAIRY DEVELOPMENT BOARD
10348929	2012-03-22	2019-03-13	-	Book debts; Current assets, goods procured under LC	800,000,000	Axis Bank Limited
10372064	2012-07-28	2018-05-09	-	Book debts; goods, produce, merchandise, stocks	3,260,000,000	Indian Bank
10381722	2012-10-17	2018-01-25	-	Book debts; Movable property (not being pledge); Borrower entire goods, movables on pari-passu basis	2,970,000,000	State Bank of India
10562073	2015-03-26	-	2016-07-15	Movable property (not being pledge)	64,260,000	NATIONAL DAIRY DEVELOPMENT BOARD (NDDB)
90095538	1994-07-19	2002-06-05	2017-10-23		48,279,000	NATIONAL DAIRY DEVELOPMENT BOARD
90095886	1994-07-19	-	2017-10-23		48,279,000	NATIONAL DAIRY DEVELOPMENT BOARD
90095986	1997-12-29	-	2017-10-23	Book debts	72,500,000	NATIONAL DAIRY DEVELOPMENT BOARD
90096023	1999-01-28	2000-07-27	2017-10-23		120,000,000	NATIONAL DAIRY DEVELOPMENT BOARD
90096054	-	-	-	Immovable property or any interest therein	1,745,000	

	1999-12-24		2010-08-09			INDIAN RENEWABLE ENERGY DEVELOPMENT AGENCY LTD.
100130469	2017-09-05	2017-12-28	-	Movable property (not being pledge); at Plastic division as per First Schedule	264,653,000	NATIONAL DAIRY DEVELOPMENT BOARD
100184193	2018-05-28	-	-	Movable property (not being pledge); Plant & Machinery as Annex I excpt 26.46 crore P&M	73,425,000	NATIONAL DAIRY DEVELOPMENT BOARD

Establishments Details

Establishment Name	City	Pincode	Address
IDMC LTD	AHMEDABAD	388121	C-11/12, GIDC ESTATE ,VITTHAL UDHYOGNAGER,ANAND562GJ

*Industry classification is derived from National Industrial Classification. If the company has changed line of business without intimating the Registrar or is a diversified business, classification may be different. We make no warranties about accuracy of industrial classification.

Update Information

We are adding and updating information about hundreds of thousands of companies every day, and periodically add companies to the queue for being updated. You can ask for a company to be added to the front of the queue for updating, especially useful if the address, directors, or other critical information has changed. Just click on the 'Update Information' button below to start the process.

[Update Information](https://www.zaubacorp.com/company-update/IDMC-LIMITED/U29299GJ1992PLC018283) (https://www.zaubacorp.com/company-update/IDMC-LIMITED/U29299GJ1992PLC018283)

All Companies (<https://www.zaubacorp.com/companybrowse>) \ All Directors (<https://www.zaubacorp.com/directorsbrowse>) \ All Trademarks (<https://www.zaubacorp.com/trademarkbrowse>) \ Septaz (https://www.septaz.com?utm_campaign=referral&utm_medium=zaubacorp&utm_source=footer) \ Import Export Data (https://www.zaubacorp.com?utm_campaign=referral&utm_medium=zaubacorp&utm_source=footer) \ About Us (https://zauba.com?utm_campaign=referral&utm_medium=zaubacorp&utm_source=footer) \ FAQ (<https://www.zaubacorp.com/faq>) \ Privacy Policy (<https://www.zaubacorp.com/privacy-policy>) \ Terms of Use (<https://www.zaubacorp.com/terms>) \ Refunds & Cancellation (<https://www.zaubacorp.com/refunds-cancellation>) \ Contact US (<https://www.zaubacorp.com/contact-us>)
© 2013 Zauba Technologies & Data Services Private Limited. All rights reserved.



(<https://www.facebook.com/zaubatechnologies>)



(<https://twitter.com/wearezauba>)



(<https://www.linkedin.com/company/zauba>)



[Products](#)[Careers \(https://zauba.company/careers.html?utm_campaign=referral&utm_medium=zaubacorp&utm_source=careers\)](https://zauba.company/careers.html?utm_campaign=referral&utm_medium=zaubacorp&utm_source=careers)[Sign In \(https://www.zaubacorp.com/user/login?destination=company/INDIAN-IMMUNOLOGICALS-LIMITED/U72200TG1999PLC032666\)](https://www.zaubacorp.com/user/login?destination=company/INDIAN-IMMUNOLOGICALS-LIMITED/U72200TG1999PLC032666)[Sign Up \(https://www.zaubacorp.com/user/register?destination=company/INDIAN-IMMUNOLOGICALS-LIMITED/U72200TG1999PLC032666\)](https://www.zaubacorp.com/user/register?destination=company/INDIAN-IMMUNOLOGICALS-LIMITED/U72200TG1999PLC032666)

Company Director Trademark Address

Enter company name or cin

[Browse Companies by Activity, Age and Location \(https://www.zaubacorp.com/company-list\)](https://www.zaubacorp.com/company-list)

[Home \(https://www.zaubacorp.com\)](https://www.zaubacorp.com) > Indian Immunologicals Limited

INDIAN IMMUNOLOGICALS LIMITED

As on: April 16, 2019

[Track this company](#)

[Basic Information \(https://www.zaubacorp.com/company/INDIAN-IMMUNOLOGICALS-](https://www.zaubacorp.com/company/INDIAN-IMMUNOLOGICALS-LIMITED/U72200TG1999PLC032666)

[LIMITED/U72200TG1999PLC032666\)](https://www.zaubacorp.com/company/INDIAN-IMMUNOLOGICALS-LIMITED/U72200TG1999PLC032666)

[Documents \(https://www.zaubacorp.com/documents/INDIAN-IMMUNOLOGICALS-LIMITED/U72200TG1999PLC032666\)](https://www.zaubacorp.com/documents/INDIAN-IMMUNOLOGICALS-LIMITED/U72200TG1999PLC032666)

[Trademarks \(https://www.zaubacorp.com/company-trademark/INDIAN-IMMUNOLOGICALS-](https://www.zaubacorp.com/company-trademark/INDIAN-IMMUNOLOGICALS-LIMITED/U72200TG1999PLC032666)

[LIMITED/U72200TG1999PLC032666\)](https://www.zaubacorp.com/company-trademark/INDIAN-IMMUNOLOGICALS-LIMITED/U72200TG1999PLC032666)

[Directors \(https://www.zaubacorp.com/company-directors/INDIAN-IMMUNOLOGICALS-](https://www.zaubacorp.com/company-directors/INDIAN-IMMUNOLOGICALS-LIMITED/U72200TG1999PLC032666)

[LIMITED/U72200TG1999PLC032666\)](https://www.zaubacorp.com/company-directors/INDIAN-IMMUNOLOGICALS-LIMITED/U72200TG1999PLC032666)

[Map \(https://www.zaubacorp.com/company-map/INDIAN-IMMUNOLOGICALS-](https://www.zaubacorp.com/company-map/INDIAN-IMMUNOLOGICALS-LIMITED/U72200TG1999PLC032666/India)

[LIMITED/U72200TG1999PLC032666/India\)](https://www.zaubacorp.com/company-map/INDIAN-IMMUNOLOGICALS-LIMITED/U72200TG1999PLC032666/India)

Indian Immunologicals Limited is a Public incorporated on 08 October 1999. It is classified as Non-govt company and is registered at Registrar of Companies, Hyderabad. Its authorized share capital is Rs. 150,000,000 and its paid up capital is Rs. 90,000,072. It is involved in Software publishing, consultancy and supply [Software publishing includes production, supply and documentation of ready-made (non-customized) software, operating systems software, business & other applications software, computer games software for all platforms. Consultancy includes providing the best solution in the form of custom software after analyzing the user's needs and problems. Custom software also includes made-to-order software based on orders from specific users. Also, included are

writing of software of any kind following directives of the users; software maintenance, web-page design].

Indian Immunologicals Limited's Annual General Meeting (AGM) was last held on 12 September 2018 and as per records from Ministry of Corporate Affairs (MCA), its balance sheet was last filed on 31 March 2018.

Directors of Indian Immunologicals Limited are Sangramsinh Raysangbhai Chaudhary, Kinnera Murthy Bhagavatula, Villuppanoor Alwar Srinivasan, Agnihotra Dakshina Murty Chavali, Anand Kumar Kanakasapathy, Dilip Rath, Yuvaraj Yashvant Patil, Prasanna Avinash Deshpande, Sanjay Madhav Mehendale, .

Indian Immunologicals Limited's Corporate Identification Number is (CIN) U72200TG1999PLC032666 and its registration number is 32666. Its Email address is shuchi.sharma@indimmune.com and its registered address is Indian Immunologicals Limited, Road No. 44, Jubilee Hills Hyderabad Rangareddi TG 500033 IN

Current status of Indian Immunologicals Limited is - Active.

Company Details

CIN	U72200TG1999PLC032666 (https://www.zaubacorp.com/company/INDIAN-IMMUNOLOGICALS-LIMITED/U72200TG1999PLC032666)
Company Name	INDIAN IMMUNOLOGICALS LIMITED
Company Status	Active
RoC	RoC-Hyderabad
Registration Number	32666
Company Category	Company limited by Shares
Company Sub Category	Non-govt company
Class of Company	Public
Date of Incorporation	08 October 1999
Age of Company	19 years, 6 month, 20 days
Activity	Software publishing, consultancy and supply [Software publishing includes production, supply and documentation of ready-made (non-customized) software, operating systems software, business & other applications software, computer games software for all platforms. Consultancy includes providing the best solution in the form of custom software after analyzing the user's needs and problems. Custom software also includes made-to-order software based on orders from specific users. Also, included are writing of software of any kind following directives of the users; software maintenance, web-page design]. Click here (https://www.zaubacorp.com/company-list/nic-722-company.html) to see other companies involved in same activity.

Legal Report

View all criminal and civil cases of INDIAN IMMUNOLOGICALS LIMITED

[Purchase Legal Report \(https://www.zaubacorp.com/lawsuit-add-to-cart/U72200T\)](https://www.zaubacorp.com/lawsuit-add-to-cart/U72200T)

Financial Report

Balance Sheet

Paid-up Capital	
Reserves & Surplus	
Long Term Borrowings	
Short Term Borrowings	
Trade Payables	
Current Investments	
Inventories	
Trade Receivables	
Cash and Bank Balances	

Profit & Loss

Total Revenue (Turnover)	
Total Expenses	
Employee Benefit Expenses	
Finance Costs	
Depreciation	
Profit Before Tax	
Profit After Tax	

Unlock complete report with historical financials and view all 833 documents for ₹499 only

[Add to Cart \(https://www.zaubacorp.com/lawsuit-add-to-cart/U72200T\)](https://www.zaubacorp.com/lawsuit-add-to-cart/U72200T)

Graphical report containing historical financial performance. Click Here (<https://www.zaubacorp.com/company->)

Number of Members -

report/L85110KA1981PLC013115) to view financial report of Infosys Ltd.

✔ Lifetime access to all documents

✔ Download all 833 documents in one click

✔ View Events Timeline - List of all company events since inception. Click Here (<https://www.zaubacorp.com/company-events/L85110KA1981PLC013115>) to view Events Timeline of Infosys Ltd.

Previous Names

Login (<https://www.zaubacorp.com/user/login?destination=company/INDIAN-IMMUNOLOGICALS-LIMITED/U72200TG1999PLC032666>) to view previous names

Previous CINS

Login (<https://www.zaubacorp.com/user/login?destination=company/INDIAN-IMMUNOLOGICALS-LIMITED/U72200TG1999PLC032666>) to view previous cins

Share Capital & Number of Employees

Authorised Capital ₹150,000,000

Paid up capital ₹90,000,072

Number of Employees Login to view (<https://www.zaubacorp.com/user/login?destination=company/INDIAN-IMMUNOLOGICALS-LIMITED/U72200TG1999PLC032666>)

Listing and Annual Compliance Details

Listing status	Unlisted
Date of Last Annual General Meeting	12 September 2018
Date of Latest Balance Sheet	31 March 2018

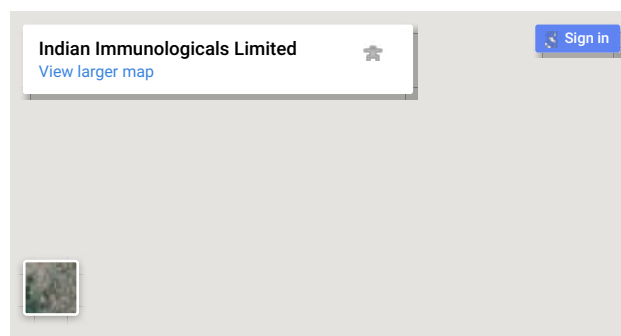
Contact Details

Email ID: shuchi.sharma@indimmune.com

Website: Click here to add.

Address:

Indian Immunologicals Limited, Road No. 44, Jubilee Hills
Hyderabad Rangareddi TG 500033 IN



Director Details

DIN	Director Name	Designation	Appointment Date	
01850128	SANGRAMSINH RAYSANGBHAI CHAUDHARY (https://www.zaubacorp.com/director/SANGRAMSINH-RAYSANGBHAI-CHAUDHARY/01850128)	Director	22 January 2015	View other directorships
01878144	KINNERA MURTHY BHAGAVATULA (https://www.zaubacorp.com/director/KINNERA-MURTHY-BHAGAVATULA/01878144)	Director	18 March 2015	View other directorships
00064153	VILLUPPANOOR ALWAR SRINIVASAN (https://www.zaubacorp.com/director/VILLUPPANOOR-ALWAR-SRINIVASAN/00064153)	Director	06 September 2005	View other directorships
00374673	AGNIHOTRA DAKSHINA MURTY CHAVALI (https://www.zaubacorp.com/director/AGNIHOTRA-DAKSHINA-MURTY-CHAVALI/00374673)	Director	18 March 2015	View other directorships
03268712	ANAND KUMAR KANAKASAPATHY (https://www.zaubacorp.com/director/ANAND-KUMAR-KANAKASAPATHY/03268712)	Managing Director	01 November 2010	View other directorships
05163623	DILIP RATH (https://www.zaubacorp.com/director/DILIP-RATH/05163623)	Director	15 April 2012	View other directorships
07058130	YUVARAJ YASHVANT PATIL (https://www.zaubacorp.com/director/YUVARAJ-YASHVANT-PATIL/07058130)	Director	24 March 2017	View other directorships
07999606	PRASANNA AVINASH DESHPANDE (https://www.zaubacorp.com/director/PRASANNA-AVINASH-DESHPANDE/07999606)	Wholetime Director	11 December 2017	View other directorships
08080775	SANJAY MADHAV MEHENDALE (https://www.zaubacorp.com/director/SANJAY-MADHAV-MEHENDALE/08080775)	Director	12 March 2018	View other directorships

Past Director Details

DIN	Director Name	Appointment Date	Cessation Date
-----	---------------	------------------	----------------

Login (<https://www.zaubacorp.com/user/login?destination=company/INDIAN-IMMUNOLOGICALS-LIMITED/U72200TG1999PLC032666>) to view past directors.

Companies with Similar Address

CIN	Name	Address
U67120TG1994PLC018544	PRAGATHI SHARE AND STOCK BROKING LIMITED (https://www.zaubacorp.com/company/PRAGATHI-SHARE-)	PLOT NO.1319,ROAD NO.68,JUBILEE HILLS,HYDERABAD JUBILEE HILLS,HYDERABAD

	AND-STOCK-BROKING-LIMITED/U67120TG1994PLC018544)	JUBILEE HILLS, HYDERABAD TG 500033 IN
U72200TG2000PTC033597	VALMIK TECHNOLOGIES (INDIA) PRIVATE LIMITED (https://www.zaubacorp.com/company/VALMIK-TECHNOLOGIES-INDIA-PRIVATE-LIMITED/U72200TG2000PTC033597)	PLOT NO.655, ROAD NO.34, JUBILEE HILLS HYDERABAD-33. JUBILEE HILLS, HYDERABAD-33. JUBILEE HILLS, HYDERABAD-33. TG 500033 IN
U92111TG2005PTC046941	ENJOY MEDIA PRIVATE LIMITED (https://www.zaubacorp.com/company/ENJOY-MEDIA-PRIVATE-LIMITED/U92111TG2005PTC046941)	PLOT NO,512 ROAD NO.,30 JUBILEE HILLS HYDERABAD 033 JUBILEE HILLS HYDERABAD,033 JUBILEE HILLS HYDERABAD,033 TG 500033 IN
U74300TG2002PTC038375	MAC MAZON INDIA PRIVATE LIMITED (https://www.zaubacorp.com/company/MAC-MAZON-INDIA-PRIVATE-LIMITED/U74300TG2002PTC038375)	PLOT.NO.1224, ROAD.NO.62, JUBILEE HILLS HYDERABAD-33 JUBILEE HILLS, HYDERABAD-33 JUBILEE HILLS, HYDERABAD-33 TG 500033 IN
U24110TG2005PTC046792	VISAKHA DRILLING FLUIDS PRIVATE LIMITED (https://www.zaubacorp.com/company/VISAKHA-DRILLING-FLUIDS-PRIVATE-LIMITED/U24110TG2005PTC046792)	PLOT NO.198, ROAD NO.76, JUBILEE HILLS HYDERABAD - 500 033 EE HILLS HYDERABAD - 500 033 EE HILLS, HYDERABAD - 500 033 TG 000000 IN
U72200TG1995PLC022307	IN TECHNET LIMITED (https://www.zaubacorp.com/company/IN-TECHNET-LIMITED/U72200TG1995PLC022307)	PLOT :1100, ROAD NO.36, JUBILEE HILLS, HYDERABAD-33 JUBILEE HILLS, HYDERABAD-33 JUBILEE HILLS, HYDERABAD-33 TG 500033 IN
U74140TG2000PTC033621	DSS CONSULTANCY AND PROJECTS PRIVATE LIMITED (https://www.zaubacorp.com/company/DSS-CONSULTANCY-AND-PROJECTS-PRIVATE-LIMITED/U74140TG2000PTC033621)	C-55, ROAD NO.D1, FILM NAGAR, JUBILEE HILLS HYDERABAD-33 JUBILEE HILLS, HYDERABAD-33 JUBILEE HILLS, HYDERABAD-33 TG 500033 IN
U72200TG2014PTC092151	ADVAITA TECHNOLOGY SOLUTIONS PRIVATE LIMITED (https://www.zaubacorp.com/company/ADVAITA-TECHNOLOGY-SOLUTIONS-PRIVATE-LIMITED/U72200TG2014PTC092151)	Unit No. 304, 3rd Floor, Plot No. 844, Road No. 44 B/H PEDDAMMA TEMPLE, Jubilee Hills Hyderabad Hyderabad TG 500033 IN
U45200TG2006PTC049644	ZHURAN INFRASTRUCTURE PRIVATE LIMITED (https://www.zaubacorp.com/company/ZHURAN-INFRASTRUCTURE-PRIVATE-LIMITED/U45200TG2006PTC049644)	PLOT NO.954. ROAD NO.48. JUBILEE. HILLS, HYDERABAD 500033 EE. HILLS, HYDERABAD, 500033 Hyderabad TG 000000 IN

[ubacorp.com/company-by-address/PLOT-NO-954-ROAD-NO-48-JUBILEE-HILLS-HYDERABAD-500033-EE-HILLS-HYDERABAD-500033-HYDERABAD-TG-000000-IN-](https://www.zaubacorp.com/company-by-address/PLOT-NO-954-ROAD-NO-48-JUBILEE-HILLS-HYDERABAD-500033-EE-HILLS-HYDERABAD-500033-HYDERABAD-TG-000000-IN-)

Prosecution Details

S.No.	Defaulting Entities	Court Name	Prosecution Section	Date Of Order	Status
No prosecutions found					

Charges/Borrowing Details

Charge ID	Creation Date	Modification Date	Closure Date	Assets Under Charge	Amount	Charge Holder
10012058	2006-06-07	-	2007-11-21	Book debts	37,000,000	EXPORT - IMPORT BANK OF INDIA
10046482	2007-02-20	-	2018-06-15	Movable property (not being pledge)	28,940,000	NATIONAL DAIRY DEVELOPMENT BOARD
10084898	2007-12-14	2009-09-19	2012-07-30		700,000,000	State Bank of India

10107607	2008-06-19	-	2018-06-15	Movable property (not being pledge)	91,237,000	NATIONAL DAIRY DEVELOPMENT BOARD
10185127	2009-09-25	2011-04-15	2015-03-30		1,000,000,000	Corporation Bank
10242342	2010-09-02	2017-04-12	-	Book debts; Floating charge; Movable property (not being pledge); Charge on cash deposits / fixed deposits	950,000,000	HDFC BANK LIMITED
10327282	2011-12-14	2018-12-26	-	Book debts; Floating charge; Movable property (not being pledge)	850,000,000	National Dairy Development Board
10470895	2013-12-12	-	-	Book debts; Floating charge; Movable property (not being pledge)	100,000,000	KOTAK MAHINDRA BANK LIMITED
10471814	2013-12-27	-	2015-07-27	Immovable property or any interest therein; Movable property (not being pledge)	5,041,600,000	National Dairy Development Board
10537106	2014-11-22	-	2017-01-13	Book debts; Movable property (not being pledge)	300,000,000	KOTAK MAHINDRA BANK LIMITED
10537139	2014-11-22	2016-06-20	2018-10-29	Immovable property or any interest therein; Movable property (not being pledge); Movable Fixed Assets and Plant & Machinery	640,000,000	KOTAK MAHINDRA BANK LIMITED
90132961	2001-10-18	-	2010-05-31		120,000,000	NATIONAL DAIRY DEVELOPMENT BOARD
90133042	2002-09-19	2002-11-09	2005-09-02	Movable property (not being pledge)	18,500,000	STATE BANK OF INDIA
90133107	2003-05-30	-	2005-09-01	Movable property (not being pledge)	154,000	EXPORT-IMPORT BANK OF INDIA
90133121	2003-08-04	-	2007-11-21		1,300,000	EXPORT-IMPORT BANK OF INDIA
90133291	2005-08-24	-	2015-10-27		200,000,000	NATIONAL DAIRY DEVELOPMENT BOARD

90133293	2005-08-30	-	2015-10-27		140,000,000	NATIONAL DAIRY DEVELOPMENT BOARD
90262784	2005-09-05	-	2008-01-18		100,000,000	NATIONAL DAIRY DEVELOPMENT BOARD
90343723	2005-09-02	-	2018-06-15		5,000,000	NATIONAL DAIRY DEVELOPMENT BOARD
100016417	2016-02-08	-	-	Pledge of shares held in foreign subsidiary.	50,454,000	Export Import Bank of India
100024550	2016-03-18	2016-06-20	-	Immovable property or any interest therein; Movable property (not being pledge); Movable Fixed Assets and Plant & Machinery	193,300,000	National Dairy Development Board
100031486	2016-05-05	2018-12-26	-	Book debts; Floating charge; Movable property (not being pledge)	50,000,000	National Dairy Development Board
100053302	2016-09-08	-	-	Book debts; Movable property (not being pledge)	400,000,000	HDFC BANK LIMITED

Establishments Details

Establishment Name	City	Pincode	Address
No establishments found			

*Industry classification is derived from National Industrial Classification. If the company has changed line of business without intimating the Registrar or is a diversified business, classification may be different. We make no warranties about accuracy of industrial classification.

Update Information

We are adding and updating information about hundreds of thousands of companies every day, and periodically add companies to the queue for being updated. You can ask for a company to be added to the front of the queue for updating, especially useful if the address, directors, or other critical information has changed. Just click on the 'Update Information' button below to start the process.

[Update Information](https://www.zaubacorp.com/company-update/INDIAN-IMMUNOLOGICALS-LIMITED/U72200TG1999PLC032666) (https://www.zaubacorp.com/company-update/INDIAN-IMMUNOLOGICALS-LIMITED/U72200TG1999PLC032666)

All Companies (<https://www.zaubacorp.com/companybrowse>) \ All Directors (<https://www.zaubacorp.com/directorsbrowse>) \ All Trademarks (<https://www.zaubacorp.com/trademarkbrowse>) \ Septaz (https://www.septaz.com?utm_campaign=referral&utm_medium=zaubacorp&utm_source=footer) \ Import Export Data (https://www.zaubacorp.com?utm_campaign=referral&utm_medium=zaubacorp&utm_source=footer) \ About Us (https://zauba.com?utm_campaign=referral&utm_medium=zaubacorp&utm_source=footer) \ FAQ (<https://www.zaubacorp.com/faq>) \ Privacy Policy (<https://www.zaubacorp.com/privacy-policy>) \ Terms of Use (<https://www.zaubacorp.com/terms>) \ Refunds & Cancellation

(<https://www.zaubacorp.com/refunds-cancellation>) \ Contact US (<https://www.zaubacorp.com/contact-us>)
© 2013 Zauba Technologies & Data Services Private Limited. All rights reserved.



(<https://www.facebook.com/zaubatechnologies>)



(<https://twitter.com/wearezauba>)



(<https://www.linkedin.com/company/zauba>)



[Products](#)[Careers \(https://zauba.company/careers.html?utm_campaign=referral&utm_medium=zaubacorp&utm_source=careers\)](https://zauba.company/careers.html?utm_campaign=referral&utm_medium=zaubacorp&utm_source=careers)[Sign In \(https://www.zaubacorp.com/user/login?destination=company/INDIAGEN-LIMITED/U01211TG2004PLC044520\)](https://www.zaubacorp.com/user/login?destination=company/INDIAGEN-LIMITED/U01211TG2004PLC044520)[Sign Up \(https://www.zaubacorp.com/user/register?destination=company/INDIAGEN-LIMITED/U01211TG2004PLC044520\)](https://www.zaubacorp.com/user/register?destination=company/INDIAGEN-LIMITED/U01211TG2004PLC044520)[Company](#) [Director](#) [Trademark](#) [Address](#)

Enter company name or cin

[Browse Companies by Activity, Age and Location \(https://www.zaubacorp.com/company-list\)](https://www.zaubacorp.com/company-list)[Home \(https://www.zaubacorp.com\)](https://www.zaubacorp.com) > [Indiagen Limited](#)

INDIAGEN LIMITED

As on: April 18, 2019

[Track this company](#)[Basic Information \(https://www.zaubacorp.com/company/INDIAGEN-LIMITED/U01211TG2004PLC044520\)](https://www.zaubacorp.com/company/INDIAGEN-LIMITED/U01211TG2004PLC044520)[Documents \(https://www.zaubacorp.com/documents/INDIAGEN-LIMITED/U01211TG2004PLC044520\)](https://www.zaubacorp.com/documents/INDIAGEN-LIMITED/U01211TG2004PLC044520)[Trademarks \(https://www.zaubacorp.com/company-trademark/INDIAGEN-LIMITED/U01211TG2004PLC044520\)](https://www.zaubacorp.com/company-trademark/INDIAGEN-LIMITED/U01211TG2004PLC044520)[Directors \(https://www.zaubacorp.com/company-directors/INDIAGEN-LIMITED/U01211TG2004PLC044520\)](https://www.zaubacorp.com/company-directors/INDIAGEN-LIMITED/U01211TG2004PLC044520)[Map \(https://www.zaubacorp.com/company-map/INDIAGEN-LIMITED/U01211TG2004PLC044520/India\)](https://www.zaubacorp.com/company-map/INDIAGEN-LIMITED/U01211TG2004PLC044520/India)

Indiagen Limited is a Public incorporated on 01 November 2004. It is classified as Non-govt company and is registered at Registrar of Companies, Hyderabad. Its authorized share capital is Rs. 50,000,000 and its paid up capital is Rs. 19,990,000. It is involved in Farming of animals

Indiagen Limited's Annual General Meeting (AGM) was last held on 10 September 2009 and as per records from Ministry of Corporate Affairs (MCA), its balance sheet was last filed on 31 March 2009.

Directors of Indiagen Limited are Nagaraj Venkatakrishnayya Belavadi, Balasubramaniam Venkatasubramaniam Kolle, Deepak Tikku, Amrita Hirubhai Patel, Trivedi Kamlesh Kumar Revashanker, .

Indiagen Limited's Corporate Identification Number is (CIN) U01211TG2004PLC044520 and its registration number is 44520. Its Email address is kiran@indimmune.com and its registered address is ROAD NO.44, JUBILEE HILLS, HYDERABAD TG 500033 IN , - , .

Current status of Indiagen Limited is - Amalgamated.

[Company Details](#)[Legal Report](#)

CIN U01211TG2004PLC044520 [View all criminal and civil cases of INDIAGEN LIMITED](https://www.zaubacorp.com/company/INDIAGEN-LIMITED/U01211TG2004PLC044520)
 (https://www.zaubacorp.com/company/INDIAGEN-LIMITED/U01211TG2004PLC044520) [Purchase Legal Report \(https://www.zaubacorp.com/lawsuit-add-to-cart/U01211T\)](https://www.zaubacorp.com/lawsuit-add-to-cart/U01211T)

Company Name	INDIAGEN LIMITED
Company Status	Amalgamated
RoC	RoC-Hyderabad
Registration Number	44520
Company Category	Company limited by Shares
Company Sub Category	Non-govt company
Class of Company	Public
Date of Incorporation	01 November 2004
Age of Company	14 years, 5 month, 27 days
Activity	Farming of animals Click here (https://www.zaubacorp.com/company-list/nic-012-company.html) to see other companies involved in same activity.
Number of Members	-

Previous Names

Login (<https://www.zaubacorp.com/user/login?destination=company/INDIAGEN-LIMITED/U01211TG2004PLC044520>) to view previous names

Previous CINS

Login (<https://www.zaubacorp.com/user/login?destination=company/INDIAGEN-LIMITED/U01211TG2004PLC044520>) to view previous cins

Share Capital & Number of Employees

Authorised Capital	₹50,000,000
Paid up capital	₹19,990,000

Financial Report

Balance Sheet

Paid-up Capital	
Reserves & Surplus	
Long Term Borrowings	
Short Term Borrowings	
Trade Payables	
Current Investments	
Inventories	
Trade Receivables	
Cash and Bank Balances	

Profit & Loss

Total Revenue (Turnover)	
Total Expenses	
Employee Benefit Expenses	
Finance Costs	
Depriciation	
Profit Before Tax	
Profit After Tax	

Unlock complete report with historical financials and view all 120 documents for ₹499 only

[Add to Cart \(https://www.zaut\)](https://www.zaut)

- ✔ Graphical report containing historical financial performance. [Click Here \(https://www.zaubacorp.com/company-report/L85110KA1981PLC013115\)](https://www.zaubacorp.com/company-report/L85110KA1981PLC013115) to view financial report of Infosys Ltd.
- ✔ Lifetime access to all documents
- ✔ Download all 120 documents in one click
- ✔ View Events Timeline - List of all company events since inception. [Click Here \(https://www.zaubacorp.com/company-events/L85110KA1981PLC013115\)](https://www.zaubacorp.com/company-events/L85110KA1981PLC013115) to view Events Timeline of Infosys Ltd.

Number of Login to view
 Employees (<https://www.zaubacorp.com/user/login?destination=company/INDIAGEN-LIMITED/U01211TG2004PLC044520>)

Listing and Annual Compliance Details

Listing status	Unlisted
Date of Last Annual General Meeting	10 September 2009
Date of Latest Balance Sheet	31 March 2009

Contact Details

Email ID: kiran@indimmune.com

Website: [Click here to add.](#)

Address:

ROAD NO.44, JUBILEE HILLS, HYDERABAD TG 500033 IN



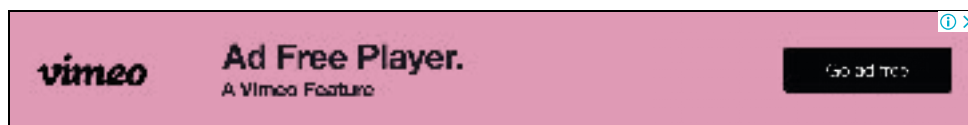
Director Details

DIN	Director Name	Designation	Appointment Date	
01734080	NAGARAJ VENKATAKRISHNAYYA BELAVADI (https://www.zaubacorp.com/director/NAGARAJ-VENKATAKRISHNAYYA-BELAVADI/01734080)	Casual Vacancy Director	01 July 2009	View other directorships
00064100	BALASUBRAMANIAM VENKATASUBRAMANIAM KOLLE (https://www.zaubacorp.com/director/BALASUBRAMANIAM-VENKATASUBRAMANIAM-KOLLE/00064100)	Director	01 November 2004	View other directorships
00064125	DEEPAK TIKKU (https://www.zaubacorp.com/director/DEEPAK-TIKKU/00064125)	Director	01 November 2004	View other directorships
00065052	AMRITA HIRUBHAI PATEL (https://www.zaubacorp.com/director/AMRITA-HIRUBHAI-PATEL/00065052)	Director	01 November 2004	View other directorships
00360087	TRIVEDI KAMLESH KUMAR REVASHANKER (https://www.zaubacorp.com/director/TRIVEDI-KAMLESH-KUMAR-REVASHANKER/00360087)	Director	01 February 2005	View other directorships

Past Director Details

DIN	Director Name	Appointment Date	Cessation Date
-----	---------------	------------------	----------------

Login (<https://www.zaubacorp.com/user/login?destination=company/INDIAGEN-LIMITED/U01211TG2004PLC044520>) to view past directors.



Companies with Similar Address

CIN	Name	Address
U72200TG2000PTC033597	VALMIK TECHNOLOGIES (INDIA) PRIVATE LIMITED (https://www.zaubacorp.com/company/VALMIK-TECHNOLOGIES-INDIA-PRIVATE-LIMITED/U72200TG2000PTC033597)	PLOT NO.655, ROAD NO.34,JUBILEE HILLS HYDERABAD-33. JUBILEE HILLS, HYDERABAD-33. JUBILEE HILLS, HYDERABAD-33. TG 500033 IN
U92111TG2005PTC046941	ENJOY MEDIA PRIVATE LIMITED (https://www.zaubacorp.com/company/ENJOY-MEDIA-PRIVATE-LIMITED/U92111TG2005PTC046941)	PLOT NO,512 ROAD NO.,,30JUBILEE HILLS HYDERABAD 033 JUBILEE HILLS HYDERABAD,033 JUBILEE HILLS HYDERABAD,033 TG 500033 IN
U74300TG2002PTC038375	MAC MAZON INDIA PRIVATE LIMITED (https://www.zaubacorp.com/company/MAC-MAZON-INDIA-PRIVATE-LIMITED/U74300TG2002PTC038375)	PLOT.NO.1224, ROAD.NO.62,JUBILEE HILLS HYDERABAD-33 JUBILEE HILLS, HYDERABAD-33 JUBILEE HILLS, HYDERABAD-33 TG 500033 IN
U24110TG2005PTC046792	VISAKHA DRILLING FLUIDS PRIVATE LIMITED (https://www.zaubacorp.com/company/VISAKHA-DRILLING-FLUIDS-PRIVATE-LIMITED/U24110TG2005PTC046792)	PLOT NO.198, ROAD NO.76, JUBILEE HILLS HYDERABAD - 500 033 EE HILLS HYDERABAD - 500 033 EE HILLS, HYDERABAD - 500 033 TG 000000 IN
U72200TG1995PLC022307	IN TECHNET LIMITED (https://www.zaubacorp.com/company/IN-TECHNET-LIMITED/U72200TG1995PLC022307)	PLOT :1100, ROAD NO.36,JUBILEE HILLS, HYDERABAD-33 JUBILEE HILLS, HYDERABAD-33 JUBILEE HILLS, HYDERABAD-33 TG 500033 IN
U74140TG2000PTC033621	DSS CONSULTANCY AND PROJECTS PRIVATE LIMITED (https://www.zaubacorp.com/company/DSS-CONSULTANCY-AND-PROJECTS-PRIVATE-LIMITED/U74140TG2000PTC033621)	C-55, ROAD NO.D1, FILM NAGAR,JUBILEE HILLS HYDERABAD-33 JUBILEE HILLS, HYDERABAD-33 JUBILEE HILLS, HYDERABAD-33 TG 500033 IN
U72200TG2014PTC092151	ADVAITA TECHNOLOGY SOLUTIONS PRIVATE LIMITED (https://www.zaubacorp.com/company/ADVAITA-TECHNOLOGY-SOLUTIONS-PRIVATE-LIMITED/U72200TG2014PTC092151)	Unit No. 304, 3rd Floor, Plot No. 844, Road No. 44 B/H PEDDAMMA TEMPLE, Jubilee Hills Hyderabad Hyderabad TG 500033 IN
U45200TG2006PTC049644	ZHURAN INFRASTRUCTURE PRIVATE LIMITED (https://www.zaubacorp.com/company/ZHURAN-INFRASTRUCTURE-PRIVATE-LIMITED/U45200TG2006PTC049644)	PLOT NO.954. ROAD NO.48. JUBILEE. HILLS, HYDERABAD 500033 EE. HILLS, HYDERABAD, 500033 Hyderabad TG 000000 IN
U45201TG2006PTC098108	JUBILEE HILLS LANDMARK PROJECTS PRIVATE LIMITED (https://www.zaubacorp.com/company/JUBILEE-HILLS-LANDMARK-PROJECTS-PRIVATE-LIMITED/U45201TG2006PTC098108)	Sy. No 16/3 Ward No. 9, Road No.1 Jubilee Hills Check Post, Jubilee Hills Hyderabad Hyderabad TG 500033 IN

www.zaubacorp.com/company-by-address/SY-NO-16-3-WARD-NO-9-ROAD-NO-1-JUBILEE-HILLS-CHECK-POST-JUBILEE-HILLS-HYDERABAD-HYDERABAD-TG-500033-IN-

Prosecution Details

S.No.	Defaulting Entities	Court Name	Prosecution Section	Date Of Order	Status
No prosecutions found					

Charges/Borrowing Details

Charge ID	Creation Date	Modification Date	Closure Date	Assets Under Charge	Amount	Charge Holder
No charges found						

Establishments Details

Establishment Name	City	Pincode	Address
No establishments found			

*Industry classification is derived from National Industrial Classification. If the company has changed line of business without intimating the Registrar or is a diversified business, classification may be different. We make no warranties about accuracy of industrial classification.

Update Information

We are adding and updating information about hundreds of thousands of companies every day, and periodically add companies to the queue for being updated. You can ask for a company to be added to the front of the queue for updating, especially useful if the address, directors, or other critical information has changed. Just click on the 'Update Information' button below to start the process.

[Update Information](https://www.zaubacorp.com/company-update/INDIAGEN-LIMITED/U01211TG2004PLC044520)

[All Companies](https://www.zaubacorp.com/companybrowse) \
 [All Directors](https://www.zaubacorp.com/directorsbrowse) \
 [All Trademarks](https://www.zaubacorp.com/trademarkbrowse) \
 [Septaz](https://www.septaz.com?utm_campaign=referral&utm_medium=zaubacorp&utm_source=footer) \
 [Import Export Data](https://www.zaubacorp.com/import-export-data) \
 [About Us](https://zauba.com?utm_campaign=referral&utm_medium=zaubacorp&utm_source=footer) \
 [FAQ](https://www.zaubacorp.com/faq) \
 [Privacy Policy](https://www.zaubacorp.com/privacy-policy) \
 [Terms of Use](https://www.zaubacorp.com/terms) \
 [Refunds & Cancellation](https://www.zaubacorp.com/refunds-cancellation) \
 [Contact US](https://www.zaubacorp.com/contact-us)

© 2013 Zauba Technologies & Data Services Private Limited. All rights reserved.

[Facebook](https://www.facebook.com/zaubatechnologies) \
 [Twitter](https://twitter.com/wearezauba) \
 [LinkedIn](https://www.linkedin.com/company/zauba)



TOP OF PAGE

[Products](#)[Careers \(https://zauba.company/careers.html?utm_campaign=referral&utm_medium=zaubacorp&utm_source=careers\)](https://zauba.company/careers.html?utm_campaign=referral&utm_medium=zaubacorp&utm_source=careers)[Sign In \(https://www.zaubacorp.com/user/login?destination=company/NDDB-DAIRY-SERVICES/U01403DL2009NPL195142\)](https://www.zaubacorp.com/user/login?destination=company/NDDB-DAIRY-SERVICES/U01403DL2009NPL195142)[Sign Up \(https://www.zaubacorp.com/user/register?destination=company/NDDB-DAIRY-SERVICES/U01403DL2009NPL195142\)](https://www.zaubacorp.com/user/register?destination=company/NDDB-DAIRY-SERVICES/U01403DL2009NPL195142)

Company Director Trademark Address

Enter company name or cin

[Browse Companies by Activity, Age and Location \(https://www.zaubacorp.com/company-list\)](https://www.zaubacorp.com/company-list)

[Home \(https://www.zaubacorp.com\)](https://www.zaubacorp.com) · [Nddb Dairy Services](#)

NDDB DAIRY SERVICES

As on: April 24, 2019

[Track this company](#)

[Basic Information \(https://www.zaubacorp.com/company/NDDB-DAIRY-SERVICES/U01403DL2009NPL195142\)](https://www.zaubacorp.com/company/NDDB-DAIRY-SERVICES/U01403DL2009NPL195142)

[Documents \(https://www.zaubacorp.com/documents/NDDB-DAIRY-SERVICES/U01403DL2009NPL195142\)](https://www.zaubacorp.com/documents/NDDB-DAIRY-SERVICES/U01403DL2009NPL195142)

[Trademarks \(https://www.zaubacorp.com/company-trademark/NDDB-DAIRY-SERVICES/U01403DL2009NPL195142\)](https://www.zaubacorp.com/company-trademark/NDDB-DAIRY-SERVICES/U01403DL2009NPL195142)

[Directors \(https://www.zaubacorp.com/company-directors/NDDB-DAIRY-SERVICES/U01403DL2009NPL195142\)](https://www.zaubacorp.com/company-directors/NDDB-DAIRY-SERVICES/U01403DL2009NPL195142)

[Map \(https://www.zaubacorp.com/company-map/NDDB-DAIRY-SERVICES/U01403DL2009NPL195142/India\)](https://www.zaubacorp.com/company-map/NDDB-DAIRY-SERVICES/U01403DL2009NPL195142/India)

Nddb Dairy Services is a Private incorporated on 12 October 2009. It is classified as Non-govt company and is registered at Registrar of Companies, Delhi. Its authorized share capital is Rs. 2,000,000,000 and its paid up capital is Rs. 2,000,000,000. It is involved in Agricultural and animal husbandry service activities, except veterinary activities.[This class includes specialized activities, on a fee or contract basis, mostly performed on the farm.]

Nddb Dairy Services's Annual General Meeting (AGM) was last held on 06 June 2018 and as per records from Ministry of Corporate Affairs (MCA), its balance sheet was last filed on 31 March 2018.

Directors of Nddb Dairy Services are Sangramsinh Raysangbhai Chaudhary, Ajay Kumar Khosla, Villuppanoor Alwar Srinivasan, Sriram Singh, Dilip Rath, Shyamala Gopinath, Omveer Singh, Mankal Shankar Sriram, Yuvaraj Yashvant Patil, Devanand Chakkingal Pathayapura, Sampath Parthasarathy, Sanjeev Khanna, .

Nddb Dairy Services's Corporate Identification Number is (CIN) U01403DL2009NPL195142 and its registration number is 195142. Its Email address is harmeet.negi@nddbdairyservices.com and its registered address is NDDB House Safdarjung Enclave New Delhi DL 110029 IN , - , .

Current status of Nddb Dairy Services is - Active.

Company Details

CIN	U01403DL2009NPL195142 (https://www.zaubacorp.com/company/NDDB-DAIRY-SERVICES/U01403DL2009NPL195142)
Company Name	NDDB DAIRY SERVICES
Company Status	Active
RoC	RoC-Delhi
Registration Number	195142
Company Category	Company limited by Shares
Company Sub Category	Non-govt company
Class of Company	Private
Date of Incorporation	12 October 2009
Age of Company	9 years, 6 month, 16 days
Activity	Agricultural and animal husbandry service activities, except veterinary activities.[This class includes specialized activities, on a fee or contract basis, mostly performed on the farm.] Click here (https://www.zaubacorp.com/company-list/nic-014-company.html) to see other companies involved in same activity.
Number of Members	-

Previous Names

Login (<https://www.zaubacorp.com/user/login?destination=company/NDDB-DAIRY-SERVICES/U01403DL2009NPL195142>) to view previous names

Previous CINS

Login (<https://www.zaubacorp.com/user/login?destination=company/NDDB-DAIRY-SERVICES/U01403DL2009NPL195142>) to view previous cins

Legal Report

View all criminal and civil cases of NDDB DAIRY SERVICES

[Purchase Legal Report \(https://www.zaubacorp.com/lawsuit-add-to-cart/U01403D\)](https://www.zaubacorp.com/lawsuit-add-to-cart/U01403D)

Financial Report

Balance Sheet

Paid-up Capital	
Reserves & Surplus	
Long Term Borrowings	
Short Term Borrowings	
Trade Payables	
Current Investments	
Inventories	
Trade Receivables	
Cash and Bank Balances	

Profit & Loss

Total Revenue (Turnover)	
Total Expenses	
Employee Benefit Expenses	
Finance Costs	
Depreciation	
Profit Before Tax	
Profit After Tax	

Unlock complete report with historical financials and view all 252 documents for ₹499 only

[Add to Cart \(https://www.zaubacorp.com\)](https://www.zaubacorp.com)

- Graphical report containing historical financial performance. Click Here (<https://www.zaubacorp.com/company-report/L85110KA1981PLC013115>) to view financial report of Infosys Ltd.
- Lifetime access to all documents
- Download all 252 documents in one click
- View Events Timeline - List of all company events since inception. Click Here (<https://www.zaubacorp.com/company-events/L85110KA1981PLC013115>) to view Events Timeline of Infosys Ltd.

Share Capital & Number of Employees

Authorised Capital ₹2,000,000,000

Paid up capital ₹2,000,000,000

Number of Employees [Login to view \(https://www.zaubacorp.com/user/login?destination=company/NDDB-DAIRY-SERVICES/U01403DL2009NPL195142\)](https://www.zaubacorp.com/user/login?destination=company/NDDB-DAIRY-SERVICES/U01403DL2009NPL195142)

Listing and Annual Compliance Details

Listing status	Unlisted
Date of Last Annual General Meeting	06 June 2018
Date of Latest Balance Sheet	31 March 2018

Contact Details

Email ID: harmeet.negi@nddbdairyservices.com

Website: [Click here to add.](#)

Address:

NDDB House Safdarjung Enclave New Delhi DL 110029 IN



Director Details

DIN	Director Name	Designation	Appointment Date	
01850128	SANGRAMSINH RAYSANGBHAI CHAUDHARY (https://www.zaubacorp.com/director/SANGRAMSINH-RAYSANGBHAI-CHAUDHARY/01850128)	Director	27 January 2012	View other directorships
01854876	AJAY KUMAR KHOSLA (https://www.zaubacorp.com/director/AJAY-KUMAR-KHOSLA/01854876)	Director	30 June 2011	View other directorships
00064153	VILLUPPANOOR ALWAR SRINIVASAN (https://www.zaubacorp.com/director/VILLUPPANOOR-ALWAR-SRINIVASAN/00064153)	Director	24 December 2014	View other directorships
06895219	SRIRAM SINGH (https://www.zaubacorp.com/director/SRIRAM-SINGH/06895219)	Wholetime Director	01 April 2017	View other directorships

05163623	DILIP RATH (https://www.zaubacorp.com/director/DILIP-RATH/05163623)	Director	27 January 2012	View other directorships
02362921	SHYAMALA GOPINATH (https://www.zaubacorp.com/director/SHYAMALA-GOPINATH/02362921)	Director	28 September 2012	View other directorships
02702981	OMVEER SINGH (https://www.zaubacorp.com/director/OMVEER-SINGH/02702981)	Managing Director	08 September 2014	View other directorships
00588922	MANKAL SHANKAR SRIRAM (https://www.zaubacorp.com/director/MANKAL-SHANKAR-SRIRAM/00588922)	Director	28 September 2012	View other directorships
07058130	YUVARAJ YASHVANT PATIL (https://www.zaubacorp.com/director/YUVARAJ-YASHVANT-PATIL/07058130)	Director	30 December 2014	View other directorships
07773929	DEVANAND CHAKKINGAL PATHAYAPURA (https://www.zaubacorp.com/director/DEVANAND-CHAKKINGAL-PATHAYAPURA/07773929)	Wholetime Director	01 April 2017	View other directorships
00337667	SAMPATH PARTHASARATHY (https://www.zaubacorp.com/director/SAMPATH-PARTHASARATHY/00337667)	Director	18 March 2011	View other directorships
02607765	SANJEEV KHANNA (https://www.zaubacorp.com/director/SANJEEV-KHANNA/02607765)	Director	21 September 2017	View other directorships

Past Director Details

DIN	Director Name	Appointment Date	Cessation Date
Login (https://www.zaubacorp.com/user/login?destination=company/NDDB-DAIRY-SERVICES/U01403DL2009NPL195142) to view past directors.			

Companies with Similar Address

CIN	Name	Address
U01403DL2009NPL195142	NDDB DAIRY SERVICES (https://www.zaubacorp.com/company/NDDB-DAIRY-SERVICES/U01403DL2009NPL195142)	NDDB House Safdarjung Enclave New Delhi DL 110029 IN
U72900DL2014PTC265152	STAR TECH ESSENTIALS PRIVATE LIMITED (https://www.zaubacorp.com/company/STAR-TECH-ESSENTIALS-PRIVATE-LIMITED/U72900DL2014PTC265152)	HOUSE NO. 208, THIRD FLOOR HUMAYUNPUR, SAFDARJUNG ENCLAVE NEW DELHI New Delhi DL 110029 IN

U31501DL2011PTC212763	RUBY METROLOGY PRIVATE LIMITED (https://www.zaubacorp.com/company/RUBY-METROLOGY-PRIVATE-LIMITED/U31501DL2011PTC212763)	HOUSE NO. 86-B, FIRST FLOOR, GALI NO. 3, KRISHNA NAGAR, SAFDARJUNG ENCLAVE NEW DELHI New Delhi DL 110029 IN
U51900DL2013PTC248418	MAKEOVER INTERNATIONAL PRIVATE LIMITED (https://www.zaubacorp.com/company/MAKEOVER-INTERNATIONAL-PRIVATE-LIMITED/U51900DL2013PTC248418)	HOUSE NO-95B,GALI NO 04, FIRST FLOOR KRISHNA NAGAR, SAFDARJUNG ENCLAVE NEW DELHI New Delhi DL 110029 IN
U74999DL2018PTC334031	PEROMONE DISTRIBUTION AND SERVICES INDIA PRIVATE LIMITED (https://www.zaubacorp.com/company/PEROMONE-DISTRIBUTION-AND-SERVICES-INDIA-PRIVATE-LIMITED/U74999DL2018PTC334031)	B-4/157, Block B-4, Safdarjung Enclave Safdarjung Enclave NEW DELHI New Delhi DL 110029 IN
U55209DL2017PTC317877	KYONG ETSOYI INDIA PRIVATE LIMITED (https://www.zaubacorp.com/company/KYONG-ETSOYI-INDIA-PRIVATE-LIMITED/U55209DL2017PTC317877)	112 SECOND FLOOR HUMAYUNPUR SAFDARJUNG ENCLAVE NEW DELHI 110029 NEW DELHI South Delhi DL 110029 IN
U74999DL2016PTC291868	FOREVERFIT SOLUTIONS PRIVATE LIMITED (https://www.zaubacorp.com/company/FOREVERFIT-SOLUTIONS-PRIVATE-LIMITED/U74999DL2016PTC291868)	B-2/211 Safdarjung Enclave, New Delhi-110029 New Delhi South West Delhi DL 110029 IN
U74899DL1981PTC011392	SIMAR INVESTMENTS PRIVATE LIMITED (https://www.zaubacorp.com/company/SIMAR-INVESTMENTS-PRIVATE-LIMITED/U74899DL1981PTC011392)	A 2-17, SAFDARJUNG ENCLAVE NEW DELHI-110029 NEW DELHI South Delhi DL 110029 IN
U74140DL2012PTC237755	FLUORESCENCE COMMUNICATIONS PRIVATE LIMITED (https://www.zaubacorp.com/company/FLUORESCENCE-COMMUNICATIONS-PRIVATE-LIMITED/U74140DL2012PTC237755)	B4/183A, SAFDARJUNG ENCLAVE, NEW DELHI - 110029 NEW DELHI South West Delhi DL 110029 IN

address (<https://www.zaubacorp.com/company-by-address/B4-183A-SAFDARJUNG-ENCLAVE-NEW-DELHI-110029-NEW-DELHI-SOUTH-WEST-DELHI-DL-110029-IN->)

Prosecution Details

S.No.	Defaulting Entities	Court Name	Prosecution Section	Date Of Order	Status
No prosecutions found					

Charges/Borrowing Details

Charge ID	Creation Date	Modification Date	Closure Date	Assets Under Charge	Amount	Charge Holder
10473450	2014-01-03	2015-10-06	-		500,000,000	National Dairy Development Board
10520795	2014-09-08	2015-10-06	-		500,000,000	National Dairy Development Board

Establishments Details

Establishment Name	City	Pincode	Address
No establishments found			

*Industry classification is derived from National Industrial Classification. If the company has changed line of business without intimating the Registrar or is a diversified business, classification may be different. We make no warranties about accuracy of industrial classification.

Update Information

We are adding and updating information about hundreds of thousands of companies every day, and periodically add companies to the queue for being updated. You can ask for a company to be added to the front of the queue for updating, especially useful if the address, directors, or other critical information has changed. Just click on the 'Update Information' button below to start the process.

 [Update Information](https://www.zaubacorp.com/company-update/NDDB-DAIRY-SERVICES/U01403DL2009NPL195142) (<https://www.zaubacorp.com/company-update/NDDB-DAIRY-SERVICES/U01403DL2009NPL195142>)

All Companies (<https://www.zaubacorp.com/companybrowse>) \ All Directors (<https://www.zaubacorp.com/directorsbrowse>) \ All Trademarks (<https://www.zaubacorp.com/trademarkbrowse>) \ Septaz (https://www.septaz.com?utm_campaign=referral&utm_medium=zaubacorp&utm_source=footer) \ Import Export Data (<https://www.zaubacorp.com/import-export-data>) \ About Us (<https://www.zaubacorp.com/about-us>) \ FAQ (<https://www.zaubacorp.com/faq>) \ Privacy Policy (<https://www.zaubacorp.com/privacy-policy>) \ Terms of Use (<https://www.zaubacorp.com/terms>) \ Refunds & Cancellation (<https://www.zaubacorp.com/refunds-cancellation>) \ Contact US (<https://www.zaubacorp.com/contact-us>)
© 2013 Zaubacorp & Data Services Private Limited. All rights reserved.



<https://www.facebook.com/zaubatechnologies>



<https://twitter.com/wearezauba>



<https://www.linkedin.com/company/zauba>



[Products](#)[Careers](https://zauba.company/careers.html?utm_campaign=referral&utm_medium=zaubacorp&utm_source=careers)[Sign In](https://www.zaubacorp.com/user/login?destination=company/SAFAL-NATIONAL-EXCHANGE-OF-INDIA-LIMITED/U51909DL2006PLC234695)[Sign Up](https://www.zaubacorp.com/user/register?destination=company/SAFAL-NATIONAL-EXCHANGE-OF-INDIA-LIMITED/U51909DL2006PLC234695)

Company Director Trademark Address

Enter company name or cin

[Browse Companies by Activity, Age and Location](https://www.zaubacorp.com/company-list)

[Home](https://www.zaubacorp.com) » [Safal National Exchange Of India Limited](#)

SAFAL NATIONAL EXCHANGE OF INDIA LIMITED

As on: April 24, 2019

[Track this company](#)

[Basic Information](https://www.zaubacorp.com/company/SAFAL-NATIONAL-EXCHANGE-OF-INDIA-LIMITED/U51909DL2006PLC234695)

[Documents](https://www.zaubacorp.com/documents/SAFAL-NATIONAL-EXCHANGE-OF-INDIA-LIMITED/U51909DL2006PLC234695)

[Trademarks](https://www.zaubacorp.com/company-trademark/SAFAL-NATIONAL-EXCHANGE-OF-INDIA-LIMITED/U51909DL2006PLC234695)

[Directors](https://www.zaubacorp.com/company-directors/SAFAL-NATIONAL-EXCHANGE-OF-INDIA-LIMITED/U51909DL2006PLC234695)

[Map](https://www.zaubacorp.com/company-map/SAFAL-NATIONAL-EXCHANGE-OF-INDIA-LIMITED/U51909DL2006PLC234695/India)

Safal National Exchange Of India Limited is a Public incorporated on 20 September 2006. It is classified as Non-govt company and is registered at Registrar of Companies, Delhi. Its authorized share capital is Rs. 300,000,000 and its paid up capital is Rs. 240,000,000. It is involved in Other wholesale [Includes

specialized wholesale not covered in any one of the previous categories and wholesale in a variety of goods without any particular specialization.]

Safal National Exchange Of India Limited's Annual General Meeting (AGM) was last held on 06 August 2012 and as per records from Ministry of Corporate Affairs (MCA), its balance sheet was last filed on 31 March 2012.

Directors of Safal National Exchange Of India Limited are Nagarajan Sivaramakrishnan, Meeneshkumar Champaklal Shah, Ramanathan Subramaniam, Nikhil Vinay Madgavkar, Pradipta Kumar Sahoo, .

Safal National Exchange Of India Limited's Corporate Identification Number is (CIN) U51909DL2006PLC234695 and its registration number is 234695. Its Email address is t.joseph@motherdairy.com and its registered address is "MOTHER DAIRY" PATPARGANJ DELHI East Delhi DL 110092 IN , - , .

Current status of Safal National Exchange Of India Limited is - Amalgamated.

Company Details

CIN	U51909DL2006PLC234695 (https://www.zaubacorp.com/company/SAFAL-NATIONAL-EXCHANGE-OF-INDIA-LIMITED/U51909DL2006PLC234695)
Company Name	SAFAL NATIONAL EXCHANGE OF INDIA LIMITED
Company Status	Amalgamated
RoC	RoC-Delhi
Registration Number	234695
Company Category	Company limited by Shares
Company Sub Category	Non-govt company
Class of Company	Public
Date of Incorporation	20 September 2006
Age of Company	12 years, 7 month, 8 days
Activity	Other wholesale [Includes specialized wholesale not covered in any one of the previous categories and wholesale in a variety of goods without any particular specialization.] Click here (https://www.zaubacorp.com/company-list/nic-519-company.html) to see other companies involved in same activity.
Number of Members	-

Previous Names

Legal Report

View all criminal and civil cases of SAFAL NATIONAL EXCHANGE OF INDIA LIMITED

[Purchase Legal Report \(https://www.zaubacorp.com/lawsuit-add-to-cart/U51909D\)](https://www.zaubacorp.com/lawsuit-add-to-cart/U51909D)

Financial Report

Balance Sheet

Paid-up Capital	
Reserves & Surplus	
Long Term Borrowings	
Short Term Borrowings	
Trade Payables	
Current Investments	
Inventories	
Trade Receivables	
Cash and Bank Balances	

Profit & Loss

Total Revenue (Turnover)	
Total Expenses	
Employee Benefit Expenses	
Finance Costs	
Depriciation	
Profit Before Tax	
Profit After Tax	

Unlock complete report with historical financials and view all 189 documents for ₹499 only

[Add to Cart \(https://www.zaut\)](https://www.zaut)

Graphical report containing historical financial performance. Click Here (<https://www.zaubacorp.com/company-report/L85110KA1981PLC013115>) to view financial report of

Login (<https://www.zaubacorp.com/user/login?destination=company/SAFAL-NATIONAL-EXCHANGE-OF-INDIA-LIMITED/U51909DL2006PLC234695>) to view previous names

Infosys Ltd.

- ✔ Lifetime access to all documents
- ✔ Download all 189 documents in one click
- ✔ View Events Timeline - List of all company events since inception. Click Here (<https://www.zaubacorp.com/company-events/L85110KA1981PLC013115>) to view Events Timeline of Infosys Ltd.

Previous CINS

Login (<https://www.zaubacorp.com/user/login?destination=company/SAFAL-NATIONAL-EXCHANGE-OF-INDIA-LIMITED/U51909DL2006PLC234695>) to view previous cins

Share Capital & Number of Employees

Authorised Capital ₹300,000,000

Paid up capital ₹240,000,000

Number of Employees Login to view (<https://www.zaubacorp.com/user/login?destination=company/SAFAL-NATIONAL-EXCHANGE-OF-INDIA-LIMITED/U51909DL2006PLC234695>)

Listing and Annual Compliance Details

Listing status Unlisted

Date of Last Annual General Meeting 06 August 2012

Date of Latest Balance Sheet 31 March 2012



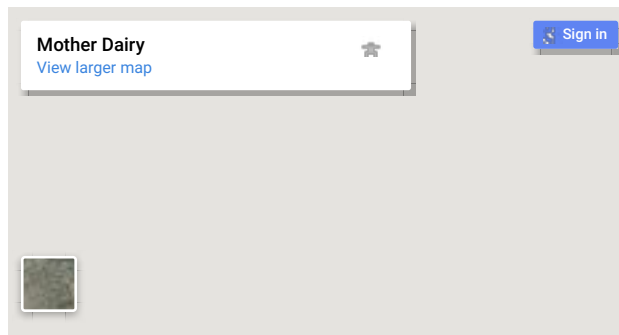
Contact Details

Email ID: t.joseph@motherdairy.com

Website: Click here to add.

Address:

"MOTHER DAIRY" PATPARGANJ DELHI East Delhi DL 110092 IN



Director Details

DIN	Director Name	Designation	Appointment Date
-----	---------------	-------------	------------------

03060429	NAGARAJAN SIVARAMAKRISHNAN (https://www.zaubacorp.com/director/NAGARAJAN-SIVARAMAKRISHNAN/03060429)	Director	04 January 2012	View other directorships
03147155	MEENESHKUMAR CHAMPAKLAL SHAH (https://www.zaubacorp.com/director/MEENESHKUMAR-CHAMPAKLAL-SHAH/03147155)	Director	24 June 2010	View other directorships
03147816	RAMANATHAN SUBRAMANIAM (https://www.zaubacorp.com/director/RAMANATHAN-SUBRAMANIAM/03147816)	Director	24 June 2010	View other directorships
05163088	NIKHIL VINAY MADGAVKAR (https://www.zaubacorp.com/director/NIKHIL-VINAY-MADGAVKAR/05163088)	Director	04 January 2012	View other directorships
05163167	PRADIPTA KUMAR SAHOO (https://www.zaubacorp.com/director/PRADIPTA-KUMAR-SAHOO/05163167)	Director	04 January 2012	View other directorships

Past Director Details

DIN	Director Name	Appointment Date	Cessation Date
-----	---------------	------------------	----------------

Login (<https://www.zaubacorp.com/user/login?destination=company/SAFAL-NATIONAL-EXCHANGE-OF-INDIA-LIMITED/U51909DL2006PLC234695>) to view past directors.

Companies with Similar Address

CIN	Name	Address
U70200DL2008PTC182593	PRAKARSHA REALITY SOLUTIONS PRIVATE LIMITED (https://www.zaubacorp.com/company/PRAKARSHA-REALITY-SOLUTIONS-PRIVATE-LIMITED/U70200DL2008PTC182593)	SRI RADHA MADHAV BHAWAN SHOP PLOT-67, PANDAV NAGAR OPP. MOTHER DAIRY EAST DELHI-110092 DELHI East Delhi DL 110092 IN
U70200DL2013PTC252146	SRT REALITY PRIVATE LIMITED (https://www.zaubacorp.com/company/SRT-REALITY-PRIVATE-LIMITED/U70200DL2013PTC252146)	E-24, GROUND FLOOR, GALI NO. 25 MADHU VIHAR, IP EXTN. DELHI EAST DELHI DL 110092 IN EAST DELHI East Delhi DL 110092 IN
U52340DL2018PTC340928	SANSUM TRADING PRIVATE LIMITED (https://www.zaubacorp.com/company/SANSUM-TRADING-PRIVATE-LIMITED/U52340DL2018PTC340928)	E-24, GROUND FLOOR, GALI NO. 25 MADHU VIHAR, IP EXTN. DELHI EAST DELHI DL 110092 IN EAST DELHI East Delhi DL 110092 IN
U51909DL2006PLC234695	SAFAL NATIONAL EXCHANGE OF INDIA LIMITED (https://www.zaubacorp.com/company/SAFAL-NATIONAL-EXCHANGE-OF-INDIA-LIMITED/U51909DL2006PLC234695)	"MOTHER DAIRY" PATPARGANJ DELHI East Delhi DL 110092 IN
U80900DL2013PTC257084	AZURE GLOBAL TRAINING SERVICES PRIVATE LIMITED (https://www.zaubacorp.com/company/AZURE-GLOBAL-TRAINING-SERVICES-PRIVATE-LIMITED/U80900DL2013PTC257084)	110, Dhruva CGHS Patparganj, Mother Dairy Plant New Delhi East Delhi DL 110092 IN
U74899DL1995PTC074069	VAISHVI SURYANSH PRIVATE LIMITED (https://www.zaubacorp.com/company/VAISHVI-SURYANSH-PRIVATE-LIMITED/U74899DL1995PTC074069)	110,DHRUWA APPARTMENT,NEAR MOTHER DAIRY PATPARGANJ DELHI East Delhi DL 110092 IN
U74120DL2009PTC195216	ARDEN TELECOM PRIVATE LIMITED	D-19 GROUND FLOOR, NEAR MOTHER DAIRY

	(https://www.zaubacorp.com/company/ARDEN-TELECOM-PRIVATE-LIMITED/U74120DL2009PTC195216)	PANDAV NAGAR , NEW DELHI -110092 NEW DELHI East Delhi DL 110092 IN
U15400DL2011PTC215705	DROPDI HERBALS MARKETING PRIVATE LIMITED (https://www.zaubacorp.com/company/DROPDI-HERBALS-MARKETING-PRIVATE-LIMITED/U15400DL2011PTC215705)	S-130, PANDAV NAGAR, MOTHER DAIRY NEAR RAJENDRA ASHRAM, DELHI - 110092 DELHI East Delhi DL 110092 IN
U55204DL2007PTC161230	NOIDA LUXURY HOTEL AND RESORTS PRIVATE LIMITED (https://www.zaubacorp.com/company/NOIDA-LUXURY-HOTEL-AND-RESORTS-PRIVATE-LIMITED/U55204DL2007PTC161230)	A 3/205 EKTA GARDENS, 9 PATPARGANJ MOTHER DAIRY ROAD DELHI East Delhi DL 110092 IN

ilar address (<https://www.zaubacorp.com/company-by-address/A-3-205-EKTA-GARDENS-9-PATPARGANJ-MOTHER-DAIRY-ROAD-DELHI-EAST-DELHI-DL-110092-IN->)

Prosecution Details

S.No.	Defaulting Entities	Court Name	Prosecution Section	Date Of Order	Status
No prosecutions found					

Charges/Borrowing Details

Charge ID	Creation Date	Modification Date	Closure Date	Assets Under Charge	Amount	Charge Holder
No charges found						

Establishments Details

Establishment Name	City	Pincode	Address
SAFAL NATIONAL EXCHANGE OF INDIA LTD	KRPURAMWHITEFIELD	560067	WHITEFIELD-HOSKOTE HIGHWAYBANGALOREBANGALORE656KN

*Industry classification is derived from National Industrial Classification. If the company has changed line of business without intimating the Registrar or is a diversified business, classification may be different. We make no warranties about accuracy of industrial classification.

Update Information

We are adding and updating information about hundreds of thousands of companies every day, and periodically add companies to the queue for being updated. You can ask for a company to be added to the front of the queue for updating, especially useful if the address, directors, or other critical information has changed. Just click on the 'Update Information' button below to start the process.

[Update Information](https://www.zaubacorp.com/company-update/SAFAL-NATIONAL-EXCHANGE-OF-INDIA-LIMITED/U51909DL2006PLC234695) (<https://www.zaubacorp.com/company-update/SAFAL-NATIONAL-EXCHANGE-OF-INDIA-LIMITED/U51909DL2006PLC234695>)

All Companies (<https://www.zaubacorp.com/companybrowse>) \ All Directors (<https://www.zaubacorp.com/directorsbrowse>) \ All Trademarks (<https://www.zaubacorp.com/trademarkbrowse>) \ Septaz (https://www.septaz.com?utm_campaign=referral&utm_medium=zaubacorp&utm_source=footer) \ Import Export Data (https://www.zaubacorp.com?utm_campaign=referral&utm_medium=zaubacorp&utm_source=footer) \ About Us (https://zauba.com?utm_campaign=referral&utm_medium=zaubacorp&utm_source=footer) \ FAQ (<https://www.zaubacorp.com/faq>) \ Privacy Policy (<https://www.zaubacorp.com/privacy-policy>) \ Terms of Use (<https://www.zaubacorp.com/terms>) \ Refunds & Cancellation (<https://www.zaubacorp.com/refunds-cancellation>) \ Contact US (<https://www.zaubacorp.com/contact-us>)
© 2013 Zauba Technologies & Data Services Private Limited. All rights reserved.



(<https://www.facebook.com/zaubatechnologies>)



(<https://twitter.com/wearezauba>)



(<https://www.linkedin.com/company/zauba>)

